

CAT.



A TESSUTO
A FINTA PELLE
B NYLON
C  FINTA PELLE IGNIFUGA
C TESSUTO
C  TESSUTO IGNIFUGO
D  TESSUTO
D  TESSUTO IGNIFUGO
E VELLUTO
F CUOIO NATURALE
F CUOIO RIGENERATO
G  LANA IGNIFUGA
G  TESSUTO IGNIFUGO
H  FINTA PELLE IGNIFUGA
H  VELLUTO IGNIFUGO
H  TESSUTO IGNIFUGO
N  TESSUTO IGNIFUGO
P PELLE MEZZO FIORE

FABRIC - TISSU - STOFF - TELA
SIMIL LEATHER - SIMILICUIR - KUNSTLEDER - POLIPIEL
NYLON
FIRE RETARDANT SIMIL LEATHER - SIMILICUIR NON-FEU - FEUERHEMMENDES KUNSTLEDER - POLIPIEL IGNÍFUGA
FABRIC - TISSU - STOFF - TELA
FIRE RETARDANT FABRIC - TISSU NON-FEU - FEUERHEMMENDER STOFF - TELA IGNÍFUGA
FABRIC - TISSU - STOFF - TELA
FIRE RETARDANT FABRIC - TISSU NON-FEU - FEUERHEMMENDER STOFF - TELA IGNÍFUGA
VELVET - VELOURS - VELVETINE - TERCIOPELO
GENUINE LEATHER - CUIR NATUREL - KERNLEDER - CUERO NATURAL
REGENERATED LEATHER - CUIR RECONSTITUE - REGENERIERTES LEDER - REGENERADO DE CUERO
FIRE RETARDANT WOOL - LAINE NON-FEU - FEUERHEMMENDE WOLLE - LANA IGNÍFUGA
FIRE RETARDANT FABRIC - TISSU NON-FEU - FEUERHEMMENDER STOFF - TELA IGNÍFUGA
FIRE RETARDANT SIMIL LEATHER - SIMILICUIR NON-FEU - FEUERHEMMENDES KUNSTLEDER - POLIPIEL IGNÍFUGA
FIRE RETARDANT VELVET - VELOURS NON-FEU - FEUERHEMMENDER VELVETINE - TERCIOPELO IGNÍFUGO
FIRE RETARDANT FABRIC - TISSU NON-FEU - FEUERHEMMENDER STOFF - TELA IGNÍFUGA
FIRE RETARDANT FABRIC - TISSU NON-FEU - FEUERHEMMENDER STOFF - TELA IGNÍFUGA
MID GRAIN LEATHER - CUIR MI-FLEUR - VOLLLEDER - PIEL MEDIA FLOR



I colori dei campioni di tessuto sono indicativi.
Colours of fabric samples are approximate.



CATEGORIA A

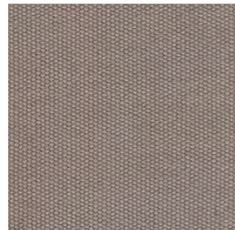
TESSUTO - FABRIC - TISSU - STOFFE - TELA

PEDRALI[®]

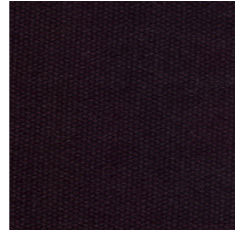
A 10



A 11



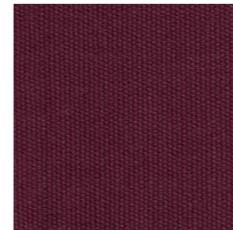
A 12



A 13



A 14



Pasha
Art. 660.8



CATEGORIA A

TESSUTO
FABRIC
TISSU
STOFFE
TELA

CATEGORIA A - CATEGORY A - CATEGORIE A - CATEGORIE A - CATEGORIA A

COMPOSIZIONE
COMPOSITION
COMPOSITION
STOFFZUSAMMENSETZUNG
COMPOSICIÓN

100% CO

RESISTENZA ALL'ABRASIONE - UNI EN ISO 12947-2:2000
ABRASION RESISTANCE - UNI EN ISO 12947-2:2000
RESISTANCE A L'ABRASION - UNI EN ISO 12947-2:2000
ABRIEBBESTÄNDIGKEIT - UNI EN ISO 12947-2:2000
RESISTENCIA A LA ABRASION - UNI EN ISO 12947-2:2000

≥ 20.000 cicli
≥ 20.000 cycles
≥ 20.000 cycles
≥ 20.000 Zyklen
≥ 20.000 ciclos

RESISTENZA ALLO SFREGAMENTO
FRICTION STRENGHT
RESISTANCE AU FROTTEMENT
SCHEUERFESTIGKEIT
RESISTENCIA A LA FROTACION

UNI EN ISO 105 B02 > 4

RESISTENZA ALLA LUCE ARTIFICIALE
COLOUR FASTNESS TO ARTIFICIAL LIGHT
TENUE A LA LUMIERE
LICHTBESTÄNDIGKEIT
RESISTENCIA A LA LUZ ARTIFICIAL

Soddisfatto UNI EN ISO 105x12 - gradi 4 su gradi 5 max
Complied with UNI EN ISO 105x12 - degress 4 on degress 5 max
Réponse favorable au UNI EN ISO 105x12 - grés 4, sur grés 5 max
UNI EN ISO 105x12 - 4 Grade, 5 max
UNI EN ISO 105x12 - 4 grados, 5 max

LAVAGGIO
CLEANING
ENTRETIEN
REINIGEN
LAVADO

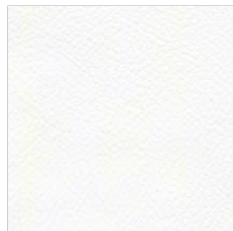
Pulire con acqua calda e un panno umido. Non usare detersivi, solventi, candeggianti, abrasivi.
Clean with warm and damp cloth. Do not use detergents, solvents, bleached, abrasives.
Nettoyer avec de l'eau chaude et un chiffon humide.
Ne pas employer de détergents, solvants, blanchisseurs, abrasifs.
Reinigen mit einem feuchten Tuch. Kein Wasch-, Lösungs-, Bleich- und Abreibungsmittel benutzen.
Limpiar con agua caliente y con trapo húmedo. No utilizar detergente, solvente, decolorante y agente abrasivo.

CATEGORIA A

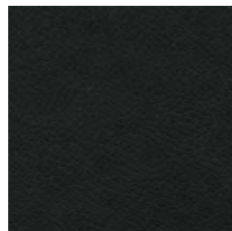
FINTA PELLE - SIMIL LEATHER - SIMILICUIR - KUNSTLEDER - POLIPIEL

PEDRALI[®]

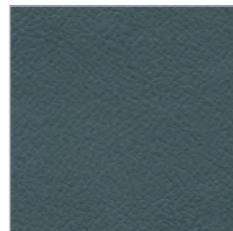
A 96



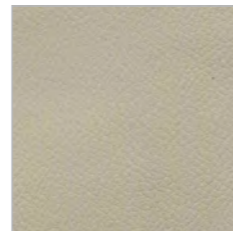
A 95



A 94



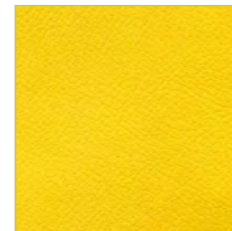
A 92



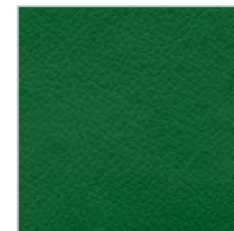
A 93



A 73



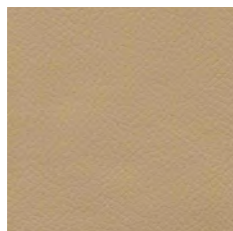
A 89



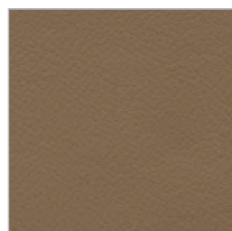
A 80



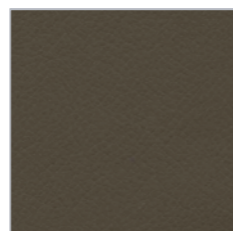
A 72



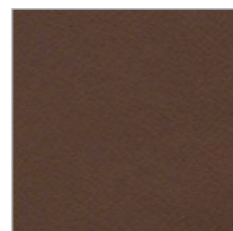
A 91



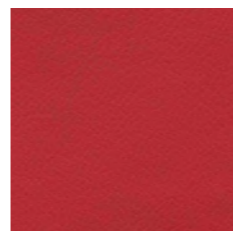
A 90



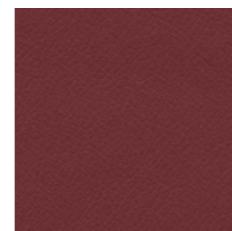
A 71



A 82



A 70



CATEGORIA A

FINTA PELLE
SIMIL LEATHER
SIMILICUIR
KUNSTLEDER
POLIPIEL

CATEGORIA A - CATEGORY A - CATEGORIE A - CATEGORIE A - CATEGORIA A

COMPOSIZIONE
COMPOSITION
COMPOSITION
STOFFZUSAMMENSETZUNG
COMPOSICIÓN

15% PL - 85% PVC

RESISTENZA ALL'ABRASIONE - Metodo Martindale
ABRASION RESISTANCE - Method Martindale
RESISTANCE A L'ABRASION - Méthod Martindale
ABRIEBBESTÄNDIGKEIT - Verfahren Martindale
RESISTENCIA A LA ABRASION - Método Martindale

50.000 cicli
50.000 cycles
50.000 cycles
50.000 Zyklen
50.000 ciclos

RESISTENZA ALLA LUCE ARTIFICIALE
COLOUR FASTNESS TO ARTIFICIAL LIGHT
TENUE A LA LUMIERE
LICHTBESTÄNDIGKEIT
RESISTENCIA A LA LUZ ARTIFICIAL

Soddisfatto Xenotest gradi 6 su gradi 8 max
Complied with Xenotest degrees 6 on degrees 8 max
Réponse favorable au Xenotest grés 6, grés 8 max
Xenotest bestanden 6 Grade auf 8 Grade max
Cumple con el Xenotest grados 6, grados 8 max

LAVAGGIO
CLEANING
ENTRETIEN
REINIGEN
LAVADO

Pulire con acqua calda e un panno umido. Non usare detersivi, solventi, candeggianti, abrasivi.
Clean with warm and damp cloth. Do not use detergents, solvents, bleached, abrasives.
Nettoyer avec de l'eau chaude et un chiffon humide. Ne pas employer de détergents, solvants, blanchisseurs, abrasifs
Reinigen mit einem feuchten Tuch. Kein Wasch-, Lösungs-, Bleich- und Abreibungsmittel benutzen.
Limpiar con agua caliente y con trapo húmedo. No utilizar detergente, solvente, decolorante y agente abrasivo.

CATEGORIA B

NYLON - NYLON - NYLON - NYLON - NYLON

PEDRALI[®]

B 01



B 02



Island



CATEGORIA B

NYLON
NYLON
NYLON
NYLON
NYLON

CATEGORIA B - CATEGORY B - CATEGORIE B - KATEGORIE B - CATEGORIA B

COMPOSIZIONE
COMPOSITION
COMPOSITION
STOFFZUSAMMENSETZUNG
COMPOSICIÓN

RESISTENZA ALL'ABRASIONE - Metodo Martindale
ABRASION RESISTANCE - Method Martindale
RESISTANCE A L'ABRASION - Méthod Martindale
ABRIEBBESTÄNDIGKEIT - Verfahren Martindale
RESISTENCIA A LA ABRASION - Método Martindale

RESISTENZA ALLO SFREGAMENTO
FRICTION STRENGHT
RESISTANCE AU FROTTEMENT
SCHEUERFESTIGKEIT
RESISTENCIA A LA FROTACION

RESISTENZA ALLA LUCE ARTIFICIALE
COLOUR FASTNESS TO ARTIFICIAL LIGHT
TENUE A LA LUMIERE
LICHTBESTÄNDIGKEIT
RESISTENCIA A LA LUZ ARTIFICIAL

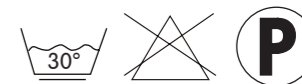
LAVAGGIO
CLEANING
ENTRETIEN
REINIGEN
LAVADO

100% Nylon
(Support film PVC)

50.000 cicli
50.000 cycles
50.000 cycles
50.000 Zyklen
50.000 ciclos

5 (UNI EN ISO 105 X12:97)

Soddisfatto Xenotest gradi 5 su gradi 8 max
Complied with Xenotest degrees 5 on degrees 8 max
Réponse favorable au Xenotest grés 6, grés 8 max
Xenotest bestanden 5 Grade auf 8 Grade max
Cumple con el Xenotest grados 5, grados 8 max

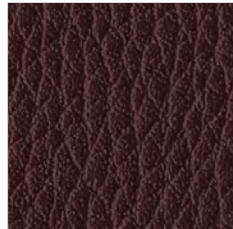


CATEGORIA C

FINTA PELLE IGNIFUGA - FIRE RETARDANT SIMIL LEATHER - SIMILICUIR NON-FEU - FEUERHEMMENDER KUNSTLEDER - POLIPIEL IGNÍFUGA

PEDRALI®

C 18



C 11



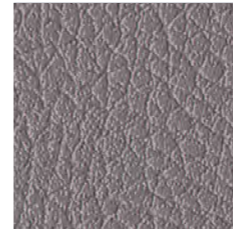
C 12



C 13



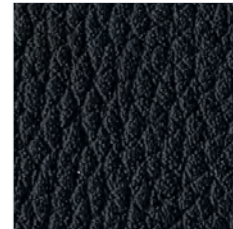
C 15



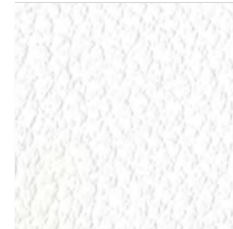
C 10



C 17



C 14



C 21



C 20



C 22





CATEGORIA C

FINTA PELLE IGNIFUGA
FIRE RETARDANT SIMIL LEATHER
SIMILICUIR NON-FEU
FEUERHEMMENDER KUNSTLEDER
POLIPIEL IGNÍFUGA

CATEGORIA C - CATEGORY C - CATEGORIE C - KATEGORIE C - CATEGORIA C

COMPOSIZIONE
COMPOSITION
COMPOSITION
STOFFZUSAMMENSETZUNG
COMPOSICIÓN

RESISTENZA ALL'ABRASIONE - Metodo Martindale
ABRASION RESISTANCE - Method Martindale
RESISTANCE A L'ABRASION - Méthod Martindale
ABRIEBBESTÄNDIGKEIT - Verfahren Martindale
RESISTENCIA A LA ABRASION - Método Martindale

RESISTENZA ALLA LUCE ARTIFICIALE
COLOUR FASTNESS TO ARTIFICIAL LIGHT
TENUE A LA LUMIERE
LICHTBESTÄNDIGKEIT
RESISTENCIA A LA LUZ ARTIFICIAL



LAVAGGIO
CLEANING
ENTRETIEN
REINIGEN
LAVADO

Pulire con un panno umido. Per le macchie ostinate utilizzare un sapone neutro. Non usare detersivi, solventi, candeggianti, abrasivi.
Clean with warm and damp cloth. More difficult stains can be removed with neutral soap.
Do not use detergents, solvents, bleached, abrasives.
Nettoyer avec de l'eau chaude et un chiffon humide. Pour les taches persistantes utiliser un savon neutre.
Ne pas employer de détergents, solvants, blanchisseurs, abrasifs.
Reinigen mit einem feuchten Tuch. Neutralseife benutzen, um Schmutzflecken zu reinigen.
Kein Wasch-, Lösungs-, Bleich- und Abreibungsmittel benutzen.
Limpiar con trapo humedo. Utilizar jabón neutro para limpiar manchas.
No utilizar detergentes, solventes, decolorantes y agentes abrasivos.

85% PVC - 15% CO

150.000 cicli
150.000 cycles
150.000 cycles
150.000 Zyklen
150.000 ciclos

Soddisfatto Xenotest gradi 6 su gradi 8 max
Complied with Xenotest degrees 6 on degrees 8 max
Réponse favorable au Xenotest grés 6, grés 8 max
Xenotest bestanden 6 Grade auf 8 Grade max
Cumple con el Xenotest grados 6, grados 8 max

EN 1021 Part 1&2
BS 5852 Crib N. 5
M1
DIN 4102 B2
M1
CA 117 E

CATEGORIA C

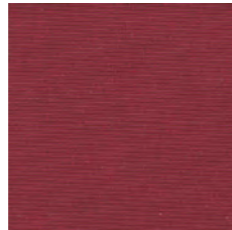
FINTE PELLE IGNIFUGA - FIRE RETARDANT SIMIL LEATHER - SIMILICUIR NON-FEU - FEUERHEMMENDER KUNSTLEDER - POLIPIEL IGNÍFUGA

PEDRALI®

C 60



C 61



C 62



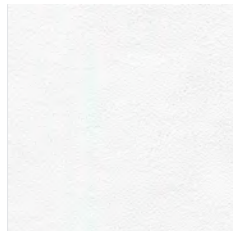
C 63



C 64



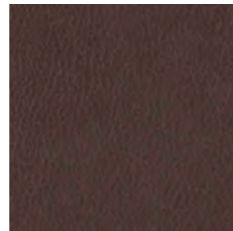
C 90



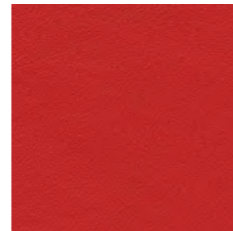
C 94



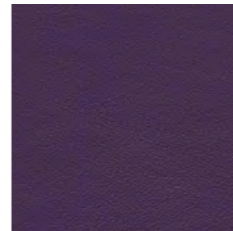
C 95



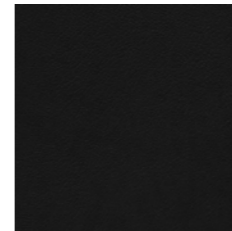
C 92



C 91



C 93





CATEGORIA C

FINTA PELLE IGNIFUGA
FIRE RETARDANT SIMIL LEATHER
SIMILICUIR NON-FEU
FEUERHEMMENDER KUNSTLEDER
POLIPIEL IGNÍFUGA

CATEGORIA C - CATEGORY C - CATEGORIE C - KATEGORIE C - CATEGORIA C

COMPOSIZIONE
COMPOSITION
COMPOSITION
STOFFZUSAMMENSETZUNG
COMPOSICIÓN

RESISTENZA ALL'ABRASIONE - Metodo Martindale
ABRASION RESISTANCE - Method Martindale
RESISTANCE A L'ABRASION - Méthod Martindale
ABRIEBBESTÄNDIGKEIT - Verfahren Martindale
RESISTENCIA A LA ABRASION - Método Martindale

RESISTENZA ALLA LUCE ARTIFICIALE
COLOUR FASTNESS TO ARTIFICIAL LIGHT
TENUE A LA LUMIERE
LICHTBESTÄNDIGKEIT
RESISTENCIA A LA LUZ ARTIFICIAL



LAVAGGIO
CLEANING
ENTRETIEN
REINIGEN
LAVADO

72% PVC - 25% CO - 3% PU

≥ 50.000 cicli
≥ 50.000 cycles
≥ 50.000 cycles
≥ 50.000 Zyklen
≥ 50.000 ciclos

Soddisfatto Xenotest gradi 6 su gradi 8 max
Complied with Xenotest degrees 6 on degrees 8 max
Réponse favorable au Xenotest grés 6, grés 8 max
Xenotest bestanden 6 Grade auf 8 Grade max
Cumple con el Xenotest grados 6, grados 8 max

UNI 9175/87 e 9175 FA-1/94 Classe 1
BS 5852 Crib N. 5
EN 1021-2/93
TB 117 sez. E p.te 1 (California)

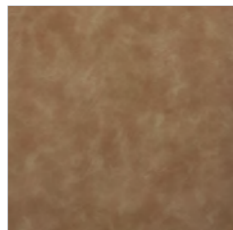


CATEGORIA C 

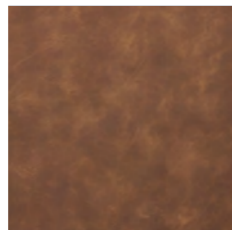
FINTA PELLE IGNIFUGA - FIRE RETARDANT SIMIL LEATHER - SIMILICUIR NON-FEU - FEUERHEMMENDER KUNSTLEDER - POLIPIEL IGNÍFUGA

PEDRALI[®]

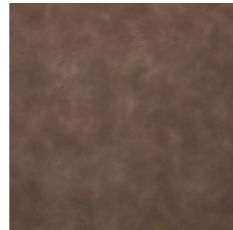
C45



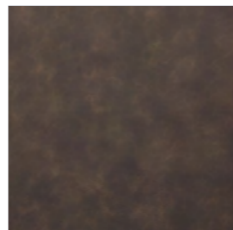
C46



C47



C48





CATEGORIA C

FINTA PELLE IGNIFUGA
FIRE RETARDANT SIMIL LEATHER
SIMILICUIR NON-FEU
FEUERHEMMENDER KUNSTLEDER
POLIPIEL IGNÍFUGA

CATEGORIA C - CATEGORY C - CATEGORIE C - KATEGORIE C - CATEGORIA C

COMPOSIZIONE
COMPOSITION
COMPOSITION
STOFFZUSAMMENSETZUNG
COMPOSICIÓN

RESISTENZA ALL'ABRASIONE - Metodo Martindale
ABRASION RESISTANCE - Method Martindale
RESISTANCE A L'ABRASION - Méthod Martindale
ABRIEBBESTÄNDIGKEIT - Verfahren Martindale
RESISTENCIA A LA ABRASION - Método Martindale

RESISTENZA ALLA LUCE ARTIFICIALE
COLOUR FASTNESS TO ARTIFICIAL LIGHT
TENUE A LA LUMIERE
LICHTBESTÄNDIGKEIT
RESISTENCIA A LA LUZ ARTIFICIAL



LAVAGGIO
CLEANING
ENTRETIEN
REINIGEN
LAVADO



80% PVC - 2% PU
18% PES

50.000 cicli
50.000 cycles
50.000 cycles
50.000 Zyklen
50.000 ciclos

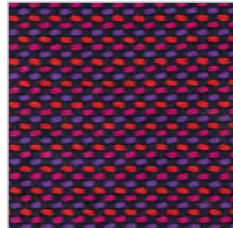
UNI 9175: classe 1/M
EN 1021-2

CATEGORIA C

TESSUTO - FABRIC - TISSU - STOFFE - TELA

PEDRALI[®]

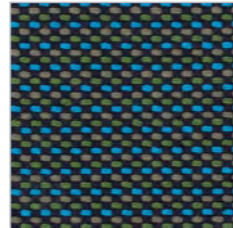
C 36



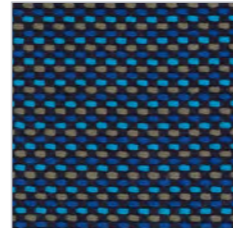
C 37



C 38



C 39



CATEGORIA C

TESSUTO
FABRIC
TISSU
STOFFE
TELA

CATEGORIA C - CATEGORY C - CATEGORIE C - KATEGORIE C - CATEGORIA C

COMPOSIZIONE
COMPOSITION
COMPOSITION
STOFFZUSAMMENSETZUNG
COMPOSICIÓN

94% CO - 6% PA

RESISTENZA ALL'ABRASIONE - Metodo Martindale
ABRASION RESISTANCE - Method Martindale
RESISTANCE A L'ABRASION - Méthod Martindale
ABRIEBBESTÄNDIGKEIT - Verfahren Martindale
RESISTENCIA A LA ABRASION - Método Martindale

40.000 cicli
40.000 cycles
40.000 cycles
40.000 Zyklen
40.000 ciclos

LAVAGGIO
CLEANING
ENTRETIEN
REINIGEN
LAVADO

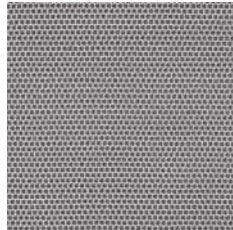


CATEGORIA C

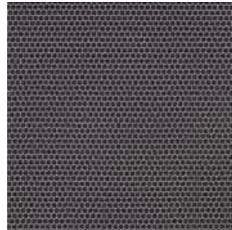
TESSUTO IGNIFUGO - FIRE RETARDANT FABRIC - TISSU NON-FEU - FEUERHEMMENDE STOFFE - TELA IGNÍFUGA

PEDRALI®

C 101



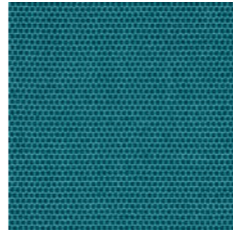
C 86



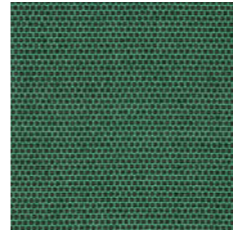
C 100



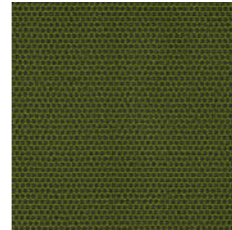
C 83



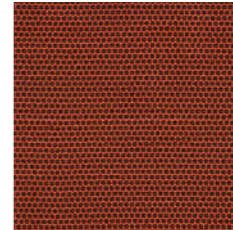
C 88



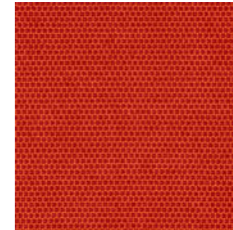
C 84



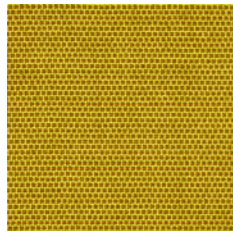
C 89



C 85



C 87





CATEGORIA C

TESSUTO IGNIFUGO
FIRE RETARDANT FABRIC
TISSU NON-FEU
FEUERHEMMENDE STOFFE
TELA IGNÍFUGA

CATEGORIA C - CATEGORY C - CATEGORIE C - KATEGORIE C - CATEGORIA C

COMPOSIZIONE
COMPOSITION
COMPOSITION
STOFFZUSAMMENSETZUNG
COMPOSICIÓN

WOOL 54% - PE 44% - PA 2%

RESISTENZA ALL'ABRASIONE - Metodo Martindale
ABRASION RESISTANCE - Method Martindale
RESISTANCE A L'ABRASION - Méthod Martindale
ABRIEBBESTÄNDIGKEIT - Verfahren Martindale
RESISTENCIA A LA ABRASION - Método Martindale

100.000 cicli
100.000 cycles
100.000 cycles
100.000 Zyklen
100.000 ciclos

RESISTENZA ALLA LUCE ARTIFICIALE
COLOUR FASTNESS TO ARTIFICIAL LIGHT
TENUE A LA LUMIERE
LICHTBESTÄNDIGKEIT
RESISTENCIA A LA LUZ ARTIFICIAL

scala 1-8, max.8 - EN ISO 105 - B02

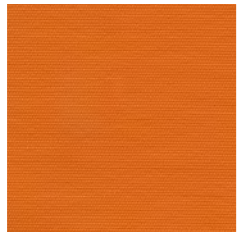


LAVAGGIO
CLEANING
ENTRETIEN
REINIGEN
LAVADO

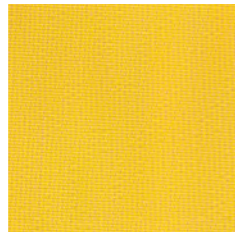
EN 1021 1&2
BS 5852 0&1
CA TB 117-2013



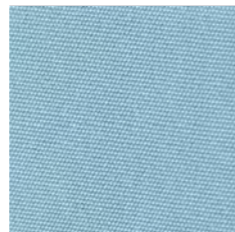
D 31



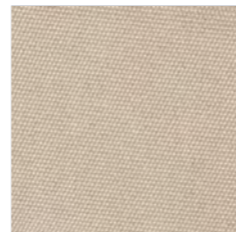
D 32



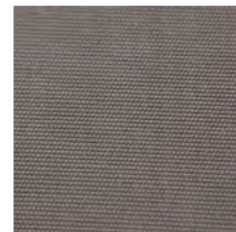
D 33



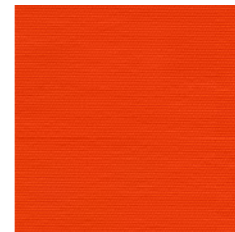
D 34



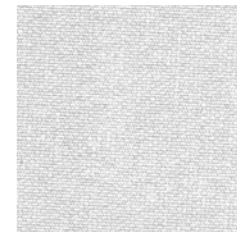
D 35



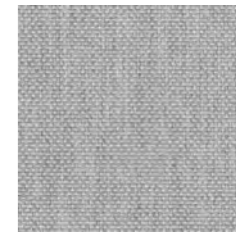
D 36



D 37



D 38



D 39





CATEGORIA D

TESSUTO
FABRIC
TISSU
STOFFE
TELA

CATEGORIA D - CATEGORY D - CATEGORIE D - KATEGORIE D - CATEGORIA D

COMPOSIZIONE
COMPOSITION
COMPOSITION
STOFFZUSAMMENSETZUNG
COMPOSICIÓN

RESISTENZA ALL'ABRASIONE - Metodo Martindale
ABRASION RESISTANCE - Method Martindale
RESISTANCE A L'ABRASION - Méthod Martindale
ABRIEBBESTÄNDIGKEIT - Verfahren Martindale
RESISTENCIA A LA ABRASION - Método Martindale

RESISTENZA ALLA LUCE ARTIFICIALE
COLOUR FASTNESS TO ARTIFICIAL LIGHT
TENUE A LA LUMIERE
LICHTBESTÄNDIGKEIT
RESISTENCIA A LA LUZ ARTIFICIAL

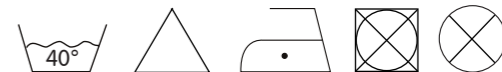


LAVAGGIO
CLEANING
ENTRETIEN
REINIGEN
LAVADO

100% Acrilico idrorepellente
100% Acrylic waterproof
100% Acrylique hydrofuge
100% Acryl wasserabweisend
100% Acrílico hidrófugo

10.000 cicli
10.000 cycles
10.000 cycles
10.000 Zyklen
10.000 ciclos

Soddisfatto Xenotest gradi 7 su gradi 8 max
Complied with Xenotest degrees 7 on degrees 8 max
Réponse favorable au Xenotest grés 7, grés 8 max
Xenotest bestanden 7 Grade auf 8 Grade max
Cumple con el Xenotest grados 7, grados 8 max

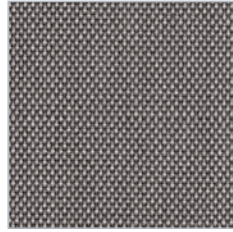


CATEGORIA D

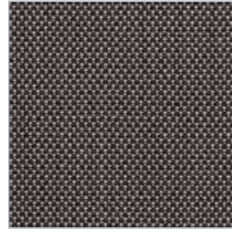
TESSUTO IGNIFUGO - FIRE RETARDANT FABRIC - TISSU NON-FEU - FEUERHEMMENDE STOFFE - TELA IGNÍFUGA

PEDRALI[®]

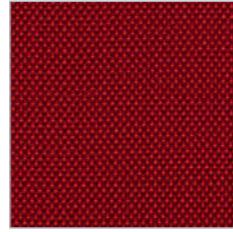
D 40



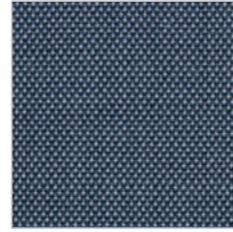
D 41



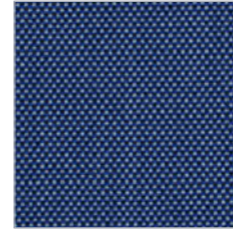
D 42



D 43



D 44





CATEGORIA D

TESSUTO IGNIFUGO
FIRE RETARDANT FABRIC
TISSU NON-FEU
FEUERHEMMENDE STOFFE
TELA IGNÍFUGA

CATEGORIA D - CATEGORY D - CATEGORIE D - KATEGORIE D - CATEGORIA D

COMPOSIZIONE
COMPOSITION
COMPOSITION
STOFFZUSAMMENSETZUNG
COMPOSICIÓN

RESISTENZA ALL'ABRASIONE - Metodo Martindale
ABRASION RESISTANCE - Method Martindale
RESISTANCE A L'ABRASION - Méthod Martindale
ABRIEBBESTÄNDIGKEIT - Verfahren Martindale
RESISTENCIA A LA ABRASION - Método Martindale

RESISTENZA ALLA LUCE ARTIFICIALE
COLOUR FASTNESS TO ARTIFICIAL LIGHT
TENUE A LA LUMIERE
LICHTBESTÄNDIGKEIT
RESISTENCIA A LA LUZ ARTIFICIAL



LAVAGGIO
CLEANING
ENTRETIEN
REINIGEN
LAVADO

88% WOOL - 12% POLYAMIDE

100.000 cicli
100.000 cycles
100.000 cycles
100.000 Zyklen
100.000 ciclos

5-7 (ISO 1-8)
5-7 (ISO 1-8)
5-7 (ISO 1-8)
5-7 (ISO 1-8)
5-7 (ISO 1-8)

EN 1021 1&2
BS 5852 0&1
CAL 117-E Class 1
CA TB 117-2013

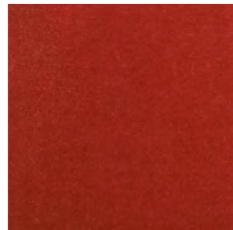


CATEGORIA E

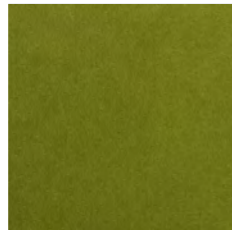
VELLUTO - VELVET - VELOURS - VELVETINE - TERCIOPELO

PEDRALI[®]

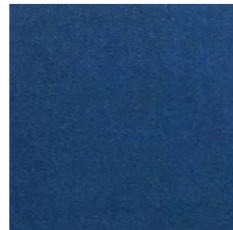
E 01



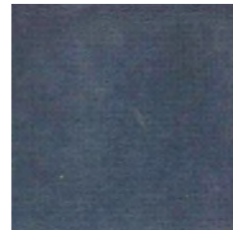
E 02



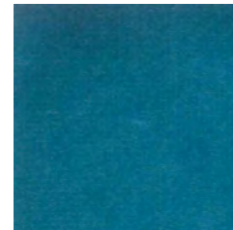
E 03



E 04



E 05



CATEGORIA E

VELLUTO
VELVET
VELOURS
VELVETINE
TERCIOPELO

CATEGORIA E - CATEGORY E - CATEGORIE E - KATEGORIE E - CATEGORIE E - CATEGORIE E

COMPOSIZIONE
COMPOSITION
COMPOSITION
STOFFZUSAMMENSETZUNG
COMPOSICIÓN

100% CO

RESISTENZA ALL'ABRASIONE - Metodo Martindale
ABRASION RESISTANCE - Method Martindale
RESISTANCE A L'ABRASION - Méthod Martindale
ABRIEBBESTÄNDIGKEIT - Verfahren Martindale
RESISTENCIA A LA ABRASION - Método Martindale

50.000 cicli
50.000 cycles
50.000 cycles
50.000 Zyklen
50.000 ciclos

RESISTENZA ALLA LUCE ARTIFICIALE
COLOUR FASTNESS TO ARTIFICIAL LIGHT
TENUE A LA LUMIERE
LICHTBESTÄNDIGKEIT
RESISTENCIA A LA LUZ ARTIFICIAL

Soddisfatto Xenotest gradi 5±1 su gradi 6 max
Complied with Xenotest degrees 5±1 on degrees 6 max
Réponse favorable au Xenotest grés 5±1, grés 6 max
Xenotest bestanden 5±1 Grade auf 6 Grade max
Cumple con el Xenotest grados 5±1, grados 6 max

LAVAGGIO
CLEANING
ENTRETIEN
REINIGEN
LAVADO



CATEGORIA F

CUOIO NATURALE - GENUINE LEATHER - CUIR NATUREL - NATURAL LEDER - CUERO NATURAL

PEDRALI®

F 05



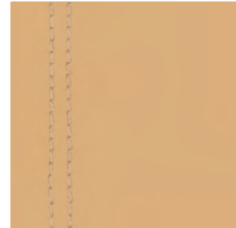
F 01



F 04



F 03



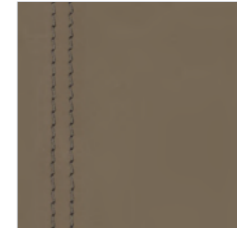
F 06



F 07



F 08



F 09



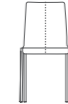
Gliss



Inga



Kuadra



Kuadra XL



Malmö



Mood



Woody



CATEGORIA F

CUOIO NATURALE
GENUINE LEATHER
CUIR NATUREL
NATURAL LEDER
CUERO NATURAL

CATEGORIA F - CATEGORY F - CATEGORIE F - KATEGORIE F - CATEGORIA F

COMPOSIZIONE
COMPOSITION
COMPOSITION
STOFFZUSAMMENSETZUNG
COMPOSICIÓN

RESISTENZA ALLO SFREGAMENTO
FRICTION STRENGHT
RESISTANCE AU FROTTEMENT
SCHEUERFESTIGKEIT
RESISTENCIA A LA FROTACION

LAVAGGIO
CLEANING
ENTRETIEN
REINIGEN
LAVADO

Cuoio naturale, conciato con sostanze vegetali.
Natural-Leder, pflanzlich geegerbt.
Genuine leather, tanned with vegetable substances.
Cuir Naturel, corroyé avec substances végétales.
Cuero natural curtido con substancias vegetales.

Soddisfacente sino a max 700 abrasioni all'umido e 1000 abrasioni al secco.
Satisfactory up to maximum 700 abrasions in humid environment and 1000 abrasions in dry environment.
Valable jusqu'à un maximum de 700 abrasions à l'humide et 1000 abrasion au sèche.
Max 700 Abriebe nass und 1000 Abriebe trocken.
Cumple max con 700 abrasiones al humedo y 1000 abrasiones al seco.

Pulire con un panno umido d'acqua.
Clean with an umid cloth in water.
Nettoyer avec un chiffon humide d'eau.
Reinigen mit durchfeuchtes Tuch und Neutralseife.
Limpiar con un trapo húmedo de agua.

CATEGORIA F

CUOIO RIGENERATO - REGENERATED LEATHER - CUIR RECONSTITUE - LEDERFASERSTOFF - REGENERADO DE CUERO

PEDRALI[®]

F 11



F 12



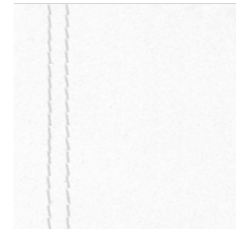
F 13



F 17



F 18



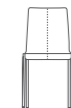
F 19



Inga



Kuadra



Kuadra XL



Malmö



Trend



CATEGORIA F

CUOIO RIGENERATO
REGENERATED LEATHER
CUIR RECONSTITUE
LEDERFASERSTOFF
REGENERADO DE CUERO

CATEGORIA F - CATEGORY F - CATEGORIE F - KATEGORIE F - CATEGORIA F

COMPOSIZIONE
COMPOSITION
COMPOSITION
STOFFZUSAMMENSETZUNG
COMPOSICIÓN

RESISTENZA ALLO STRAPPO
TEARS STRENGTH
RESISTANCE AUX ACCROCS
WEITERREISSWIDERSTAND
RESISTENCIA AL DESGARRO

RESISTENZA ALLA LUCE ARTIFICIALE
COLOUR FASTNESS TO ARTIFICIAL LIGHT
TENUE A LA LUMIERE
LICHTBESTÄNDIGKEIT
RESISTENCIA A LA LUZ ARTIFICIAL

LAVAGGIO
CLEANING
ENTRETIEN
REINIGEN
LAVADO

Ritagli e rasatura di cuoio conciato legati con lattice di gomma naturale.
Tanned leather cuttings and shavings linked with natural rubber lattex.
Chutes et rasage de cuir tanné liés avec latex de gomme naturelle.
Abschnitte und Späne aus gegerbtem Leder gebunden mit Latex von Naturkautschuk.
Recortes y corte de cuero curtido unidos con latex de goma natural.

28 N (UNI ISO 3377)

Soddisfatto Xenotest: Scala di grigi gradi 5 su gradi 8 max.
Scala di blu, gradi 6 su 8 max.
Complied with Xenotest: greychromatic Scale degrees 5 on degrees 8 max.
Blu chromatic Scale degrees 6 on degrees 8 max.
Réponse favorable au Xenotest: echelle chromatique du gris grés 5, sur grés 8 max.
Echelle chromatique du bleu grés 6, sur grés 8 max.
Xenotest bestanden graufarbenfolge Grade 5, Grade 8 max.
Blufarbenfolge Grade 6, Grade 8 max.
Cumple con el Xenotest escala de grises grados 5, grados 8 max.
escala de azules grados 6, grados 8 max.

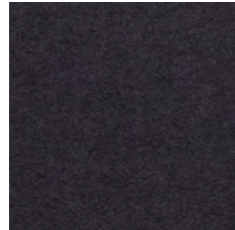
Pulire con un panno umido d'acqua.
Clean with an umid cloth in water.
Nettoyer avec un chiffon humide d'eau.
Reinigen mit durchfeuchtes Tuch und Neutralseife.
Limpiar con un trapo húmedo de agua.

CATEGORIA G

LANA IGNIFUGA - FIRE RETARDANT WOOL - LAINE NON-FEU - FEUERHEMMENDE WOLLE - LANA IGNÍFUGA

PEDRALI[®]

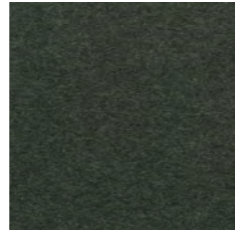
G 110



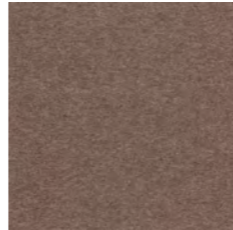
G 111



G 112



G 113



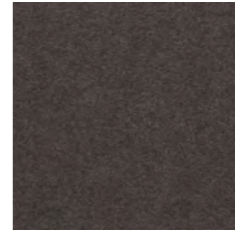
G 114



G 115



G 116





CATEGORIA G

LANA IGNIFUGA
FIRE RETARDANT WOOL
LAINE NON-FEU
FEUERHEMMENDE WOLLE
LANA IGNÍFUGA

CATEGORIA G - CATEGORY G - CATEGORIE G - KATEGORIE G - CATEGORIA G

COMPOSIZIONE
COMPOSITION
COMPOSITION
STOFFZUSAMMENSETZUNG
COMPOSICIÓN

RESISTENZA ALL'ABRASIONE - Metodo Martindale
ABRASION RESISTANCE - Method Martindale
RESISTANCE A L'ABRASION - Méthod Martindale
ABRIEBBESTÄNDIGKEIT - Verfahren Martindale
RESISTENCIA A LA ABRASION - Método Martindale

RESISTENZA ALLA LUCE ARTIFICIALE
COLOUR FASTNESS TO ARTIFICIAL LIGHT
TENUE A LA LUMIERE
LICHTBESTÄNDIGKEIT
RESISTENCIA A LA LUZ ARTIFICIAL



LAVAGGIO
CLEANING
ENTRETIEN
REINIGEN
LAVADO

100% Lana
100% Wool
100% Laine
100% Wolle
100% Lana virgen

45.000 cicli
45.000 cycles
45.000 cycles
45.000 Zyklen
45.000 ciclos

5-6 (ISO 1-8)
5-6 (ISO 1-8)
5-6 (ISO 1-8)
5-6 (ISO 1-8)
5-6 (ISO 1-8)

AS/NZS 1530.3
BS 5852 Crib 5
BS5867 part 2 type B
DIN 4102 B2
EN 1021-1/2
EN 13501, C-s1, d0, glued

IMO a.652(16)
NF D 60 013
NFPA 260
UNI 9175 11M
US Cal. Bull. 117-2013
ÖNORM B1/Q1



CATEGORIA G 

LANA IGNIFUGA - FIRE RETARDANT WOOL - LAINE NON-FEU - FEUERHEMMENDE WOLLE - LANA IGNÍFUGA

PEDRALI[®]

G 21



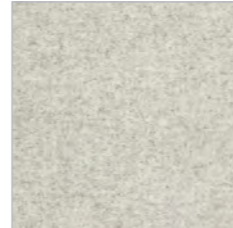
G 22



G 23



G 24



G 25





CATEGORIA G

LANA IGNIFUGA
FIRE RETARDANT WOOL
LAINE NON-FEU
FEUERHEMMENDE WOLLE
LANA IGNÍFUGA

CATEGORIA G - CATEGORY G - CATEGORIE G - KATEGORIE G - CATEGORIA G

COMPOSIZIONE
COMPOSITION
COMPOSITION
STOFFZUSAMMENSETZUNG
COMPOSICIÓN

RESISTENZA ALL'ABRASIONE - Metodo Martindale
ABRASION RESISTANCE - Method Martindale
RESISTANCE A L'ABRASION - Méthod Martindale
ABRIEBBESTÄNDIGKEIT - Verfahren Martindale
RESISTENCIA A LA ABRASION - Método Martindale

RESISTENZA ALLA LUCE ARTIFICIALE
COLOUR FASTNESS TO ARTIFICIAL LIGHT
TENUE A LA LUMIERE
LICHTBESTÄNDIGKEIT
RESISTENCIA A LA LUZ ARTIFICIAL



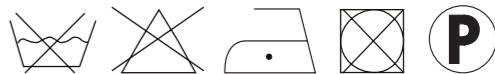
LAVAGGIO
CLEANING
ENTRETIEN
REINIGEN
LAVADO

100% Lana
100% Wool
100% Laine
100% Wolle
100% Lana virgen

45.000 cicli
45.000 cycles
45.000 cycles
45.000 Zyklen
45.000 ciclos

5-7 (ISO 1-8)
5-7 (ISO 1-8)
5-7 (ISO 1-8)
5-7 (ISO 1-8)
5-7 (ISO 1-8)

BS 5852, ig. s. 2-5
Cal. Tech. Bull. 117
DIN 4102 B2
EN 1021-1/2
IMO A.652(16)
UNI 9175/UNI 9176, 1IM
ÖNORM B1 / Q1



CATEGORIA G 

TESSUTO IGNIFUGO - FIRE RETARDANT FABRIC - TISSU NON-FEU - FEUERHEMMENDE STOFFE - TELA IGNÍFUGA

PEDRALI[®]

G 07



G 06



G 09



G 01



G 04



G 08





CATEGORIA G

TESSUTO IGNIFUGO
FIRE RETARDANT FABRIC
TISSU NON-FEU
FEUERHEMMENDE STOFFE
TELA IGNÍFUGA

CATEGORIA G - CATEGORY G - CATEGORIE G - KATEGORIE G - CATEGORIA G

COMPOSIZIONE
COMPOSITION
COMPOSITION
STOFFZUSAMMENSETZUNG
COMPOSICIÓN

RESISTENZA ALL'ABRASIONE - Metodo Martindale
ABRASION RESISTANCE - Method Martindale
RESISTANCE A L'ABRASION - Méthod Martindale
ABRIEBBESTÄNDIGKEIT - Verfahren Martindale
RESISTENCIA A LA ABRASION - Método Martindale

RESISTENZA ALLA LUCE ARTIFICIALE
COLOUR FASTNESS TO ARTIFICIAL LIGHT
TENUE A LA LUMIERE
LICHTBESTÄNDIGKEIT
RESISTENCIA A LA LUZ ARTIFICIAL



LAVAGGIO
CLEANING
ENTRETIEN
REINIGEN
LAVADO

88% PL - 12% PU

150.000 cicli
150.000 cycles
150.000 cycles
150.000 Zyklen
150.000 ciclos

Soddisfatto Xenotest gradi 5 su gradi 8 max
Complied with Xenotest degrees 5 on degrees 8 max
Réponse favorable au Xenotest grés 5, grés 8 max
Xenotest bestanden 5 Grade auf 8 Grade max
Cumple con el Xenotest grados 5, grados 8 max

BS EN 1021 1&2
BS 5852 P1, 0 Cigaret
ÖNORM B 3825-B1-3800-Q1 UK
NF P 92-503 M3
UNI 9175 Class 1IM
California Bulletin CAL 117-E-Class 1
CA TB 117-2013

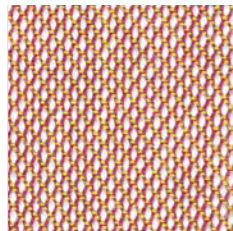


CATEGORIA G

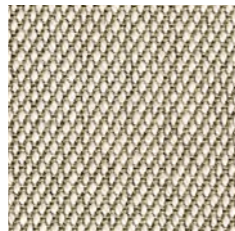
TESSUTO IGNIFUGO - FIRE RETARDANT FABRIC - TISSU NON-FEU - FEUERHEMMENDE STOFFE - TELA IGNÍFUGA

PEDRALI®

G 59



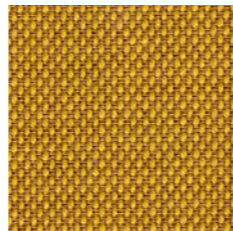
G 66



G 63



G 67



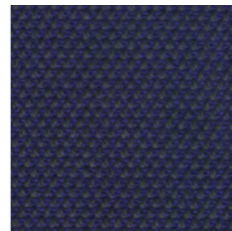
G 69



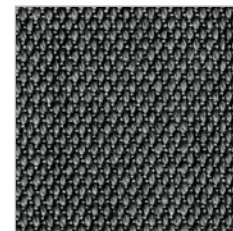
G 60



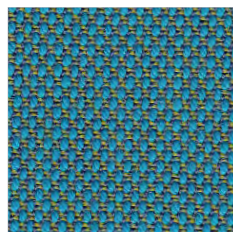
G 61



G 62



G 68



G 64



G 65





CATEGORIA G

TESSUTO IGNIFUGO
FIRE RETARDANT FABRIC
TISSU NON-FEU
FEUERHEMMENDE STOFFE
TELA IGNÍFUGA

CATEGORIA G - CATEGORY G - CATEGORIE G - KATEGORIE G - CATEGORIA G

COMPOSIZIONE
COMPOSITION
COMPOSITION
STOFFZUSAMMENSETZUNG
COMPOSICIÓN

RESISTENZA ALL'ABRASIONE - Metodo Martindale
ABRASION RESISTANCE - Method Martindale
RESISTANCE A L'ABRASION - Méthod Martindale
ABRIEBBESTÄNDIGKEIT - Verfahren Martindale
RESISTENCIA A LA ABRASION - Método Martindale

RESISTENZA ALLA LUCE ARTIFICIALE
COLOUR FASTNESS TO ARTIFICIAL LIGHT
TENUE A LA LUMIERE
LICHTBESTÄNDIGKEIT
RESISTENCIA A LA LUZ ARTIFICIAL



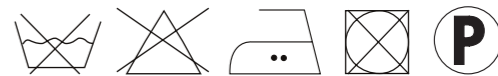
LAVAGGIO
CLEANING
ENTRETIEN
REINIGEN
LAVADO

90% Lana vergine, pettinata - 10% Nylon
90% Worsted pure new wool - 10% Nylon
90% Pure laine vierge cardée - 10% Nylon
90% Gekämmte Feinwolle - 10% Nylon
90% Pura lana peinada - 10% Nylon

80.000 cicli
80.000 cycles
80.000 cycles
80.000 Zyklen
80.000 ciclos

5-7 (ISO 1-8)
5-7 (ISO 1-8)
5-7 (ISO 1-8)
5-7 (ISO 1-8)
5-7 (ISO 1-8)

AS/NZS 3837, class 2
BS 5852, ig. s. 2-3
DIN 4102 B2, ÖNORM B1/Q1
EN 1021-1/2
NF D 60 013
NFPA 260
UNI 9175, classe 1
US Cal. Tech. Bull. 117



CATEGORIA G 

TESSUTO IGNIFUGO - FIRE RETARDANT FABRIC - TISSU NON-FEU - FEUERHEMMENDE STOFFE - TELA IGNÍFUGA

PEDRALI[®]

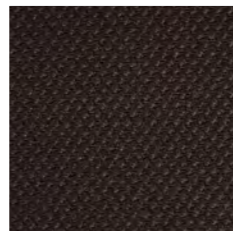
G 71



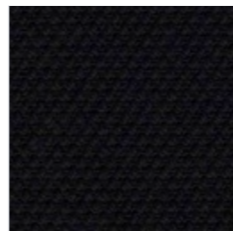
G 72



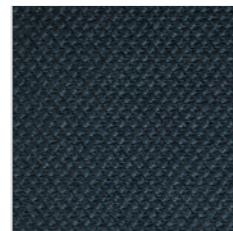
G 74



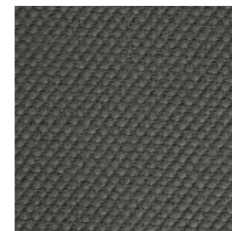
G 70



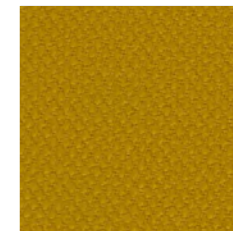
G 75



G 73



G 78





CATEGORIA G

TESSUTO IGNIFUGO
FIRE RETARDANT FABRIC
TISSU NON-FEU
FEUERHEMMENDE STOFFE
TELA IGNÍFUGA

CATEGORIA G - CATEGORY G - CATEGORIE G - KATEGORIE G - CATEGORIA G

COMPOSIZIONE

COMPOSITION
COMPOSITION
STOFFZUSAMMENSETZUNG
COMPOSICIÓN

RESISTENZA ALL'ABRASIONE - Metodo Martindale
ABRASION RESISTANCE - Method Martindale
RESISTANCE A L'ABRASION - Méthod Martindale
ABRIEBBESTÄNDIGKEIT - Verfahren Martindale
RESISTENCIA A LA ABRASION - Método Martindale

RESISTENZA ALLA LUCE ARTIFICIALE
COLOUR FASTNESS TO ARTIFICIAL LIGHT
TENUE A LA LUMIERE
LICHTBESTÄNDIGKEIT
RESISTENCIA A LA LUZ ARTIFICIAL



LAVAGGIO
CLEANING
ENTRETIEN
REINIGEN
LAVADO

90% Lana vergine, pettinata - 10% Nylon
90% Worsted pure new wool - 10% Nylon
90% Pure laine vierge cardée - 10% Nylon
90% Gekämmte Feinwolle - 10% Nylon
90% Pura lana peinada - 10% Nylon

80.000 cicli
80.000 cycles
80.000 cycles
80.000 Zyklen
80.000 ciclos

5-7 (ISO 1-8)
5-7 (ISO 1-8)
5-7 (ISO 1-8)
5-7 (ISO 1-8)
5-7 (ISO 1-8)

AS/NZS 3837, class 2
BS 5852, ig. s. 2-3
DIN 4102 B2, ÖNORM B1/Q1
EN 1021-1/2
NF D 60 013
NFPA 260
UNI 9175, classe 1
US Cal. Tech. Bull. 117



CATEGORIA G

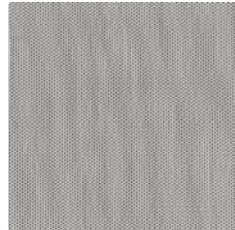
TESSUTO IGNIFUGO - FIRE RETARDANT FABRIC - TISSU NON-FEU - FEUERHEMMENDE STOFFE - TELA IGNÍFUGA

PEDRALI[®]

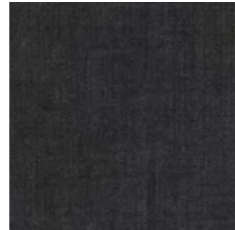
G 100



G 101



G 102



G 120



G 121



G 122





CATEGORIA G

TESSUTO IGNIFUGO
FIRE RETARDANT FABRIC
TISSU NON-FEU
FEUERHEMMENDE STOFFE
TELA IGNÍFUGA

CATEGORIA G - CATEGORY G - CATEGORIE G - KATEGORIE G - CATEGORIA G

COMPOSIZIONE
COMPOSITION
COMPOSITION
STOFFZUSAMMENSETZUNG
COMPOSICIÓN

RESISTENZA ALL'ABRASIONE - Metodo Martindale
ABRASION RESISTANCE - Method Martindale
RESISTANCE A L'ABRASION - Méthod Martindale
ABRIEBBESTÄNDIGKEIT - Verfahren Martindale
RESISTENCIA A LA ABRASION - Método Martindale

RESISTENZA ALLA LUCE ARTIFICIALE
COLOUR FASTNESS TO ARTIFICIAL LIGHT
TENUE A LA LUMIERE
LICHTBESTÄNDIGKEIT
RESISTENCIA A LA LUZ ARTIFICIAL



LAVAGGIO
CLEANING
ENTRETIEN
REINIGEN
LAVADO

G100÷G102:
90% Lana vergine, pettinata - 10% Nylon
90% Worsted pure new wool - 10% Nylon
90% Pure laine vierge cardée - 10% Nylon
90% Gekämmte Feinwolle - 10% Nylon
90% Pura lana peinada - 10% Nylon

50.000 cicli
50.000 cycles
50.000 cycles
50.000 Zyklen
50.000 ciclos

6-7 (ISO1-8)

DIN 4102 B2
EN 1021-1/2
IMO A.652(16)
NF D 60 013
UNI 9175 11M
California Tech. Bull. 117
ÖNORM B1/Q1



G120÷G122:
100% Lana vergine, pettinata
100% Worsted pure new wool
100% Pure laine vierge cardée
100% Gekämmte Feinwolle
100% Pura lana peinada

75-100.000 cicli
75-100.000 cycles
75-100.000 cycles
75-100.000 Zyklen
75-100.000 ciclos

6-7 (ISO1-8) 110 4-5

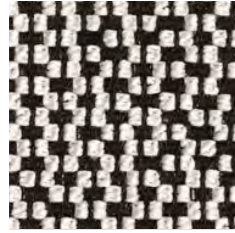
DIN 4102 B2
EN 1021-1/2
IMO FTP Code 2010 Part 8
NF D 60 013
NFPA 260
UNI 9175 11M
US Cal. Bull. 117-2013
ÖNORM B1/Q1

CATEGORIA G

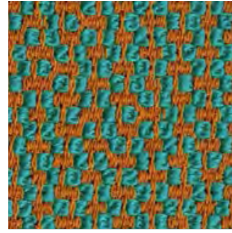
TESSUTO IGNIFUGO - FIRE RETARDANT FABRIC - TISSU NON-FEU - FEUERHEMMENDE STOFFE - TELA IGNÍFUGA

PEDRALI[®]

G 130



G 131



G 132



G 133





CATEGORIA G

TESSUTO IGNIFUGO
FIRE RETARDANT FABRIC
TISSU NON-FEU
FEUERHEMMENDE STOFFE
TELA IGNÍFUGA

CATEGORIA G - CATEGORY G - CATEGORIE G - KATEGORIE G - CATEGORIA G

COMPOSIZIONE

COMPOSITION
COMPOSITION
STOFFZUSAMMENSETZUNG
COMPOSICIÓN

95% WV - 5% PA

RESISTENZA ALL'ABRASIONE - Metodo Martindale
ABRASION RESISTANCE - Method Martindale
RESISTANCE A L'ABRASION - Méthod Martindale
ABRIEBBESTÄNDIGKEIT - Verfahren Martindale
RESISTENCIA A LA ABRASION - Método Martindale

60.000 cicli
60.000 cycles
60.000 cycles
60.000 Zyklen
60.000 ciclos

RESISTENZA ALLA LUCE ARTIFICIALE
COLOUR FASTNESS TO ARTIFICIAL LIGHT
TENUE A LA LUMIERE
LICHTBESTÄNDIGKEIT
RESISTENCIA A LA LUZ ARTIFICIAL

min. 5-8 - EN ISO 105 - B02



FAR 25.853 (12 sec. vertical)
CAL TB 117-2013
DIN 4102-1 B2
EN 13501-1
BS 5852:2006 (part1)
BS 5852:2006 (PART2) Crib 5

LAVAGGIO
CLEANING
ENTRETIEN
REINIGEN
LAVADO

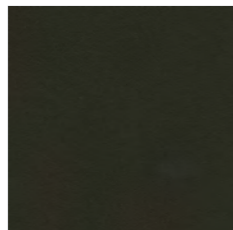


CATEGORIA H

FINTA PELLE IGNIFUGA - FIRE RETARDANT SIMIL LEATHER - SIMILICUIR NON-FEU - FEUERHEMMENDER KUNSTLEDER - POLIPIEL IGNÍFUGA

PEDRALI®

H 30



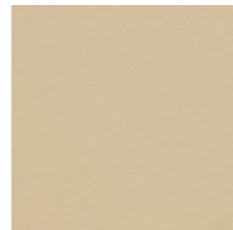
H 29



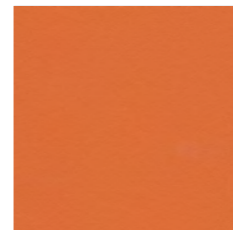
H 28



H 27



H 24



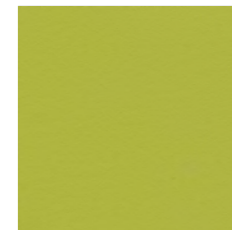
H 22



H 23



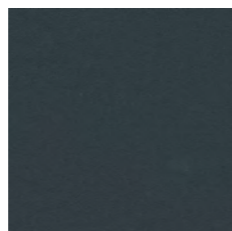
H 21



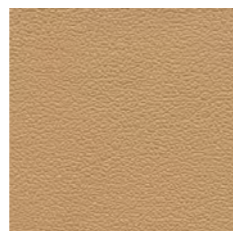
H 20



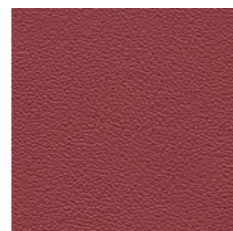
H 26



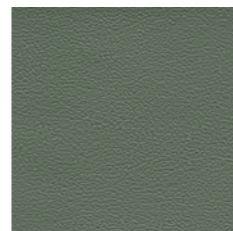
H 31



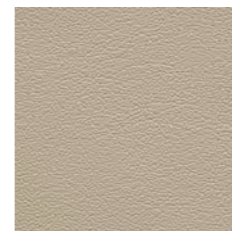
H 32



H 33



H 34



H 35





CATEGORIA H

FINTA PELLE IGNIFUGA
FIRE RETARDANT SIMIL LEATHER
SIMILICUIR NON-FEU
FEUERHEMMENDER KUNSTLEDER
POLIPIEL IGNÍFUGA

CATEGORIA H - CATEGORY H - CATEGORIE H - KATEGORIE H - CATEGORIA H

COMPOSIZIONE
COMPOSITION
COMPOSITION
STOFFZUSAMMENSETZUNG
COMPOSICIÓN

RESISTENZA ALL'ABRASIONE - Metodo Martindale
ABRASION RESISTANCE - Method Martindale
RESISTANCE A L'ABRASION - Méthod Martindale
ABRIEBBESTÄNDIGKEIT - Verfahren Martindale
RESISTENCIA A LA ABRASION - Método Martindale

RESISTENZA ALLA LUCE ARTIFICIALE
COLOUR FASTNESS TO ARTIFICIAL LIGHT
TENUE A LA LUMIERE
LICHTBESTÄNDIGKEIT
RESISTENCIA A LA LUZ ARTIFICIAL



LAVAGGIO
CLEANING
ENTRETIEN
REINIGEN
LAVADO

63% PU - 37% CO

150.000 cicli
150.000 cycles
150.000 cycles
150.000 Zyklen
150.000 ciclos

Soddisfatto Xenotest gradi 5/6 su gradi 8 max
Complied with Xenotest degrees 5/6 on degrees 8 max
Réponse favorable au Xenotest grés 5/6, grés 8 max
Xenotest bestanden 5/6 Grade auf 8 Grade max
Cumple con el Xenotest grados 5/6, grados 8 max

UNI 9175/87 e 9175 FA-1/94 Classe 1
BS EN 1021 2/93
BS 5852 1/79 e 5852/90 Part. 4&5
IMO Res. A. 652(16)/89
TB 117 sez.E - p.1 (California)

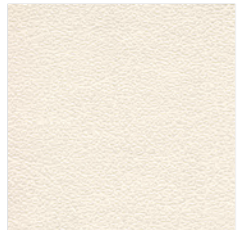
Pulire con un panno umido d'acqua.
Non usare detersivi, solventi, candeggianti, abrasivi.
Clean with an umid cloth in water. Do not use detergents, solvents, bleached, abrasives.
Nettoyer avec un chiffon humide d'eau. Ne pas employer de détergents, solvants, blanchisseurs, abrasifs.
Reinigen mit durchfeuchtes Tuch und Neutralseife.
Neutralseife benutzen, um Schmutzflecken zu reinigen. Kein Wasch-, Lösungs-, Bleich- und Abreibungsmittel benutzen.
Limpiar con un trapo húmedo de agua. Utilizar jabón neutro para limpiar manchas.
No utilizar detergentes, solventes, decolorantes y agentes abrasivos.

CATEGORIA H

FINTA PELLE IGNIFUGA - FIRE RETARDANT SIMIL LEATHER - SIMILICUIR NON-FEU - FEUERHEMMENDER KUNSTLEDER - POLIPIEL IGNÍFUGA

PEDRALI®

H 80



H 81



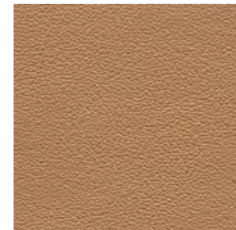
H 82



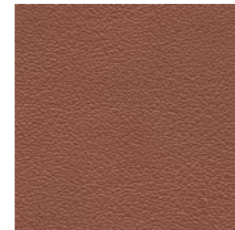
H 83



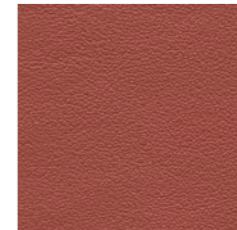
H 84



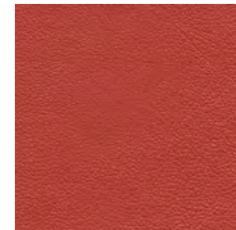
H 85



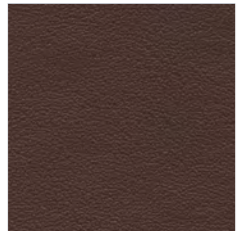
H 86



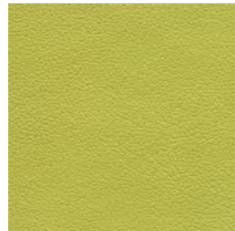
H 87



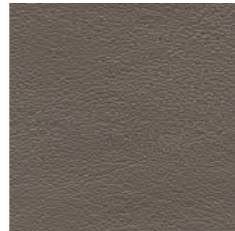
H 88



H 89



H 90





CATEGORIA H

FINTA PELLE IGNIFUGA
FIRE RETARDANT SIMIL LEATHER
SIMILICUIR NON-FEU
FEUERHEMMENDER KUNSTLEDER
POLIPIEL IGNÍFUGA

CATEGORIA H - CATEGORY H - CATEGORIE H - KATEGORIE H - CATEGORIA H

COMPOSIZIONE
COMPOSITION
COMPOSITION
STOFFZUSAMMENSETZUNG
COMPOSICIÓN

RESISTENZA ALL'ABRASIONE - Metodo Martindale
ABRASION RESISTANCE - Method Martindale
RESISTANCE A L'ABRASION - Méthod Martindale
ABRIEBBESTÄNDIGKEIT - Verfahren Martindale
RESISTENCIA A LA ABRASION - Método Martindale

RESISTENZA ALLA LUCE ARTIFICIALE
COLOUR FASTNESS TO ARTIFICIAL LIGHT
TENUE A LA LUMIERE
LICHTBESTÄNDIGKEIT
RESISTENCIA A LA LUZ ARTIFICIAL



LAVAGGIO
CLEANING
ENTRETIEN
REINIGEN
LAVADO

63% PU - 37% CO

150.000 cicli
150.000 cycles
150.000 cycles
150.000 Zyklen
150.000 ciclos

Soddisfatto Xenotest gradi 5/6 su gradi 8 max
Complied with Xenotest degrees 5/6 on degrees 8 max
Réponse favorable au Xenotest grés 5/6, grés 8 max
Xenotest bestanden 5/6 Grade auf 8 Grade max
Cumple con el Xenotest grados 5/6, grados 8 max

UNI 9175/87 e 9175 FA-1/94 Classe 1
BS EN 1021 2/93
BS 5852 1/79 e 5852/90 Part. 4&5
IMO Res. A. 652(16)/89
TB 117 sez.E - p.1 (California)

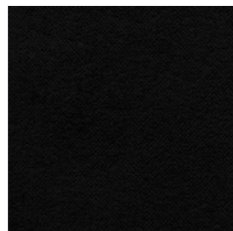
Pulire con un panno umido d'acqua.
Non usare detersivi, solventi, candeggianti, abrasivi.
Clean with an umid cloth in water. Do not use detergents, solvents, bleached, abrasives.
Nettoyer avec un chiffon humide d'eau. Ne pas employer de détergents, solvants, blanchisseurs, abrasifs.
Reinigen mit durchfeuchtes Tuch und Neutralseife.
Neutralseife benutzen, um Schmutzflecken zu reinigen. Kein Wasch-, Lösungs-, Bleich- und Abreibungsmittel benutzen.
Limpiar con un trapo húmedo de agua. Utilizar jabón neutro para limpiar manchas.
No utilizar detergentes, solventes, decolorantes y agentes abrasivos.

CATEGORIA H

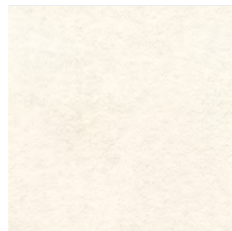
VELLUTO IGNIFUGO - FIRE RETARDANT VELVET - VELOURS NON-FEU - FEUERHEMMENDE VELVETINE - TERCIOPELO IGNÍFUGO

PEDRALI®

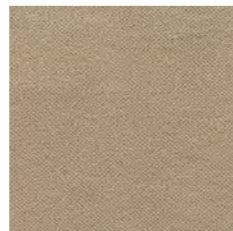
H 41



H 40



H 44



H 45



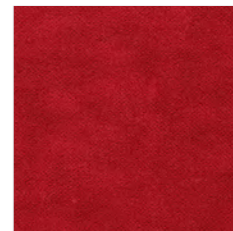
H 46



H 51



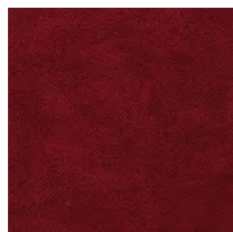
H 53



H 52



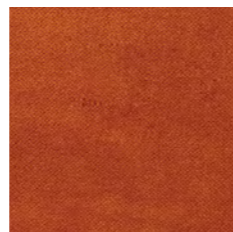
H 42



H 47



H 48



H 43



H 49



H 50





CATEGORIA H

VELLUTO IGNIFUGO
FIRE RETARDANT VELVET
VELOURS NON-FEU
FEUERHEMMENDE VELVETINE
TERCIOPELO IGNÍFUGO

CATEGORIA H - CATEGORY H - CATEGORIE H - KATEGORIE H - CATEGORIA H

COMPOSIZIONE
COMPOSITION
COMPOSITION
STOFFZUSAMMENSETZUNG
COMPOSICIÓN

RESISTENZA ALL'ABRASIONE - Metodo Martindale
ABRASION RESISTANCE - Method Martindale
RESISTANCE A L'ABRASION - Méthod Martindale
ABRIEBBESTÄNDIGKEIT - Verfahren Martindale
RESISTENCIA A LA ABRASION - Método Martindale

RESISTENZA ALLA LUCE ARTIFICIALE
COLOUR FASTNESS TO ARTIFICIAL LIGHT
TENUE A LA LUMIERE
LICHTBESTÄNDIGKEIT
RESISTENCIA A LA LUZ ARTIFICIAL



LAVAGGIO
CLEANING
ENTRETIEN
REINIGEN
LAVADO

100% TREVIRA CS ®

100.000 cicli
100.000 cycles
100.000 cycles
100.000 Zyklen
100.000 ciclos

Soddisfatto Xenotest gradi 5±1 su gradi 6 max
Complied with Xenotest degrees 5±1 on degrees 6 max
Réponse favorable au Xenotest grés 5±1, grés 6 max
Xenotest bestanden 5±1 Grade auf 6 Grade max
Cumple con el Xenotest grados 5±1, grados 6 max

UNI 9177/87 CLASSE 1
BS 5852/90
DIN 4102 CLASSE M1
DIN 4102/1 KLASSE B1Tech.
Bull. 117E
IMO res. A. 652 (16)

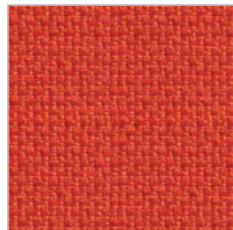


CATEGORIA H

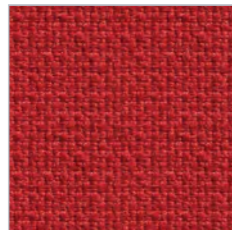
TESSUTO IGNIFUGO - FIRE RETARDANT FABRIC - TISSU NON-FEU - FEUERHEMMENDE STOFFE - TELA IGNÍFUGA

PEDRALI[®]

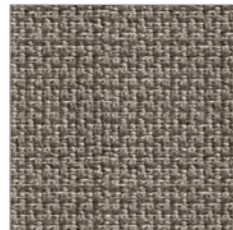
H 60



H 61



H 62



H 63



H 64





CATEGORIA H

TESSUTO IGNIFUGO
FIRE RETARDANT FABRIC
TISSU NON-FEU
FEUERHEMMENDE STOFFE
TELA IGNÍFUGA

CATEGORIA H - CATEGORY H - CATEGORIE H - KATEGORIE H - CATEGORIA H

COMPOSIZIONE
COMPOSITION
COMPOSITION
STOFFZUSAMMENSETZUNG
COMPOSICIÓN

RESISTENZA ALL'ABRASIONE - Metodo Martindale
ABRASION RESISTANCE - Method Martindale
RESISTANCE A L'ABRASION - Méthod Martindale
ABRIEBBESTÄNDIGKEIT - Verfahren Martindale
RESISTENCIA A LA ABRASION - Método Martindale

RESISTENZA ALLA LUCE ARTIFICIALE
COLOUR FASTNESS TO ARTIFICIAL LIGHT
TENUE A LA LUMIERE
LICHTBESTÄNDIGKEIT
RESISTENCIA A LA LUZ ARTIFICIAL



LAVAGGIO
CLEANING
ENTRETIEN
REINIGEN
LAVADO

92% Lana vergine - 8% Poliammide
92% Pure new wool - 8% Polyamide
92% Laine vierge - 8% Polyamide
92% Rohwolle - 8% Polyamid
92% Lana virgen - 8% Poliamida

200.000 cicli
200.000 cycles
200.000 cycles
200.000 Zyklen
200.000 ciclos

Soddisfatto Xenotest gradi 5 su gradi 8 max
Complied with Xenotest degrees 5 on degrees 8 max
Réponse favorable au Xenotest grés 5, grés 8 max
Xenotest bestanden 5 Grade auf 8 Grade max
Cumple con el Xenotest grados 5, grados 8 max

EN 1021 1&2
BS 5852 0&1
Calif. Bull. 117 E

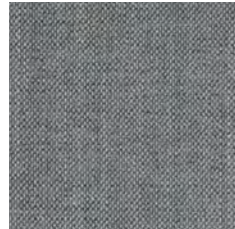


CATEGORIA N

TESSUTO IGNIFUGO - FIRE RETARDANT FABRIC - TISSU NON-FEU - FEUERHEMMENDE STOFFE - TELA IGNÍFUGA

PEDRALI[®]

N 01



N 02



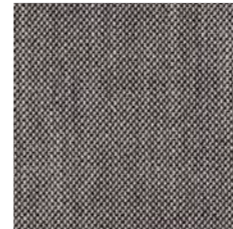
N 03



N 04



N 05





CATEGORIA N

TESSUTO IGNIFUGO
FIRE RETARDANT FABRIC
TISSU NON-FEU
FEUERHEMMENDE STOFFE
TELA IGNÍFUGA

CATEGORIA N - CATEGORY N - CATEGORIE N - KATEGORIE N - CATEGORIA N

COMPOSIZIONE
COMPOSITION
COMPOSITION
STOFFZUSAMMENSETZUNG
COMPOSICIÓN

8% LI - 58% WV - 5% PA - 4% PL - 25% VI

RESISTENZA ALL'ABRASIONE - Metodo Martindale
ABRASION RESISTANCE - Method Martindale
RESISTANCE A L'ABRASION - Méthod Martindale
ABRIEBBESTÄNDIGKEIT - Verfahren Martindale
RESISTENCIA A LA ABRASION - Método Martindale

50.000 cicli
50.000 cycles
50.000 cycles
50.000 Zyklen
50.000 ciclos

RESISTENZA ALLA LUCE ARTIFICIALE
COLOUR FASTNESS TO ARTIFICIAL LIGHT
TENUE A LA LUMIERE
LICHTBESTÄNDIGKEIT
RESISTENCIA A LA LUZ ARTIFICIAL

5-7 (ISO 1-8)
5-7 (ISO 1-8)
5-7 (ISO 1-8)
5-7 (ISO 1-8)
5-7 (ISO 1-8)



DIN 4102 B2
EN 1021-1/2
IMO A.652(16) trattato ignifugo
US Cal. Bull. 117-2013

LAVAGGIO
CLEANING
ENTRETIEN
REINIGEN
LAVADO

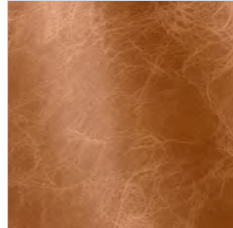


CATEGORIA P

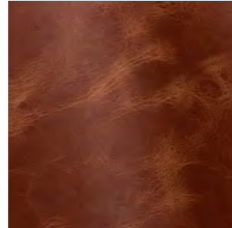
PELLE MEZZO FIORE - MID-GRAIN LEATHER - CUIR MI-FLEUR - VOLLEDER - PIEL MEDIA FLOR

PEDRALI[®]

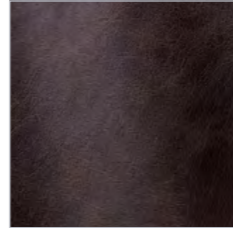
PBS



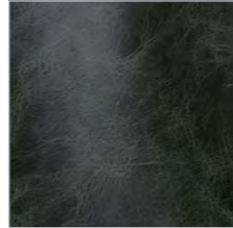
PCO



PMS



PVE



CATEGORIA P

PELLE MEZZO FIORE
MID GRAIN LEATHER
CUIR MI-FLEUR
VOLLEDER
PIEL MEDIA FLOR

CATEGORIA P - CATEGORY P - CATEGORIE P - KATEGORIE P - CATEGORIA P

COMPOSIZIONE
COMPOSITION
COMPOSITION
STOFFZUSAMMENSETZUNG
COMPOSICIÓN

RESISTENZA ALL'ABRASIONE - Metodo Martindale
ABRASION RESISTANCE - Method Martindale
RESISTANCE A L'ABRASION - Méthod Martindale
ABRIEBBESTÄNDIGKEIT - Verfahren Martindale
RESISTENCIA A LA ABRASION - Método Martindale

RESISTENZA ALLA LUCE ARTIFICIALE
COLOUR FASTNESS TO ARTIFICIAL LIGHT
TENUE A LA LUMIERE
LICHTBESTÄNDIGKEIT
RESISTENCIA A LA LUZ ARTIFICIAL

LAVAGGIO
CLEANING
ENTRETIEN
REINIGEN
LAVADO

Pulire con acqua calda e un panno umido. Non usare detersivi, solventi, candeggianti, abrasivi.
Clean with warm and damp cloth. Do not use detergents, solvents, bleached, abrasives.
Nettoyer avec de l'eau chaude et un chiffon humide. Ne pas employer de détergents, solvants, blanchisseurs, abrasifs
Reinigen mit einem feuchten Tuch. Kein Wasch-, Lösungs-, Bleich- und Abreibungsmittel benutzen.
Limpiar con agua caliente y con trapo húmedo. No utilizar detergente, solvente, decolorante y agente abrasivo.

Vera pelle, mezzo fiore
Mid-Grain Leather
Cuir Mi-Fleur
Volleder
Piel media flor

UNI EN ISO 11640 ISO 105 A03 ≥ 3/4
UNI EN ISO 11640 ISO 105 A03 ≥ 3/4
UNI EN ISO 11640 ISO 105 A03 ≥ 3/4
UNI EN ISO 11640 ISO 105 A03 ≥ 3/4
UNI EN ISO 11640 ISO 105 A03 ≥ 3/4

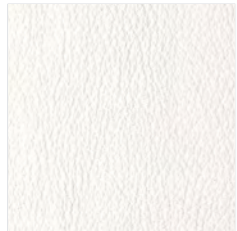
Soddisfatto Xenotest UNI EN ISO 105 B02 ≥ 5
Complied with Xenotest UNI EN ISO 105 B02 ≥ 5
Réponse favorable au Xenotest UNI EN ISO 105 B02 ≥ 5
Xenotest bestanden UNI EN ISO 105 B02 ≥ 5
Cumple con el Xenotest UNI EN ISO 105 B02 ≥ 5

CATEGORIA P

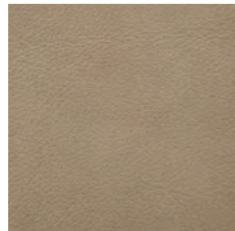
PELLE MEZZO FIORE - MID GRAIN LEATHER - CUIR MI-FLEUR - VOLLEDER - PIEL MEDIA FLOR

PEDRALI[®]

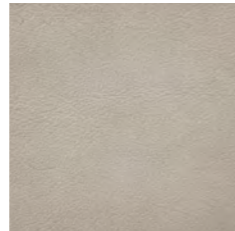
PBI



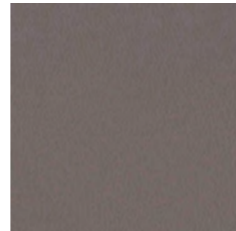
PSA



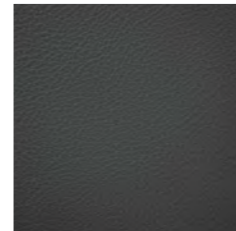
PGC



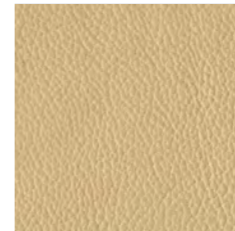
PGA



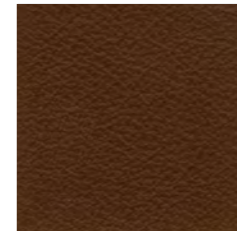
PGR



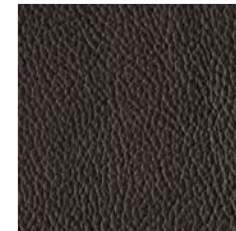
PBE



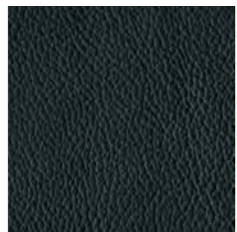
PTA



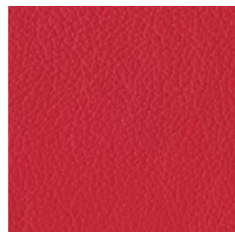
PMA



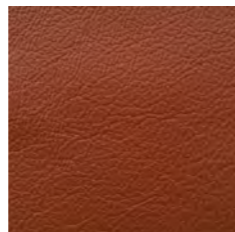
PNE



PRO



PTE



CATEGORIA P

PELLE MEZZO FIORE
MID GRAIN LEATHER
CUIR MI-FLEUR
VOLLEDER
PIEL MEDIA FLOR

CATEGORIA P - CATEGORY P - CATEGORIE P - KATEGORIE P - CATEGORIA P

COMPOSIZIONE
COMPOSITION
COMPOSITION
STOFFZUSAMMENSETZUNG
COMPOSICIÓN

RESISTENZA ALLO SFREGAMENTO
FRICTION STRENGHT
RESISTANCE AU FROTTEMENT
SCHEUERFESTIGKEIT
RESISTENCIA A LA FROTACION

LAVAGGIO
CLEANING
ENTRETIEN
REINIGEN
LAVADO

Vera pelle, mezzo fiore
Mid-Grain Leather
Cuir Mi-Fleur
Volleder
Piel media flor

500 cicli
500 cycles
500 cycles
500 Zyklen
500 ciclos

Pulire con un panno umido d'acqua. Non usare detersivi, solventi, candeggianti, abrasivi.
Clean with an umid cloth in water. Do not use detergents, solvents, bleached, abrasives.
Nettoyer avec un chiffon humide d'eau. Ne pas employer de détergents, solvants, blanchisseurs, abrasifs.
Reinigen mit durchfeuchtes Tuch und Neutralseife.. Neutralseife benutzen, um Schmutzflecken zu reinigen.
Kein Wasch-, Lösungs-, Bleich- und Abreibungsmittel benutzen.
Limpiar con un trapo húmedo de agua. Utilizar jabón neutro para limpiar manchas.
No utilizar detergentes, solventes, decolorantes y agentes abrasivos

CATEGORIA P

PELLE MEZZO FIORE TRAFORATA - PERFORATED MID GRAIN LEATHER - CUIR MI-FLEUR PERFORÉ - PERFORIERTES NARBENKORRIGIERTES VOLLEDER - PIEL MEDIA FLOR PERFORADA

PEDRALI®

PGCF



PGRF



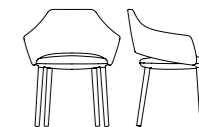
PMAF



PTEF



Vic / Vic Metal



CATEGORIA P

PELLE MEZZO FIORE TRAFORATA
PERFORATED MID GRAIN LEATHER
CUIR MI-FLEUR PERFORÉ
PERFORIERTES NARBENKORRIGIERTES VOLLEDER
PIEL MEDIA FLOR PERFORADA

CATEGORIA P - CATEGORY P - CATEGORIE P - CATEGORIE P - CATEGORIE P - CATEGORIE P

COMPOSIZIONE
COMPOSITION
COMPOSITION
STOFFZUSAMMENSETZUNG
COMPOSICIÓN

RESISTENZA ALLO SFREGAMENTO
FRICTION STRENGHT
RESISTANCE AU FROTTEMENT
SCHEUERFESTIGKEIT
RESISTENCIA A LA FROTACION

LAVAGGIO
CLEANING
ENTRETIEN
REINIGEN
LAVADO

Vera pelle, mezzo fiore traforata
Perforated Mid-Grain Leather
Cuir Mi-Fleur perforé
Perforiertes Narbenkorrigiertes Volleder
Piel media flor perforada

500 cicli
500 cycles
500 cycles
500 Zyklen
500 ciclos

Pulire con un panno umido d'acqua. Non usare detersivi, solventi, candeggianti, abrasivi.
Clean with an umid cloth in water. Do not use detergents, solvents, bleached, abrasives.
Nettoyer avec un chiffon humide d'eau. Ne pas employer de détergents, solvants, blanchisseurs, abrasifs.
Reinigen mit durchfeuchtes Tuch und Neutralseife.. Neutralseife benutzen, um Schmutzflecken zu reinigen.
Kein Wasch-, Lösungs-, Bleich- und Abreibungsmittel benutzen.
Limpiar con un trapo húmedo de agua. Utilizar jabón neutro para limpiar manchas.
No utilizar detergentes, solventes, decolorantes y agentes abrasivos