

Wooden Side Tables

Ronan & Erwan Bouroullec, 2015

vitra.

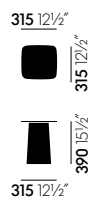


In their basic shape and dimensions, the Wooden Side Tables correspond to the Metal Side Tables created for Vitra by Ronan and Erwan Bouroullec in 2004. Like the latter, they derive their appeal from the contrast between their gracefully thin table tops and the voluminous plinth-like bases. As a distinctive feature, the plywood table tops are gently moulded around the edges to form a slight lip, which lends them an elegant, almost Japanese aura.

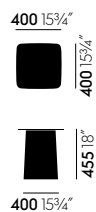
The Wooden Side Tables are available in three sizes. Together with the Metal Side Tables and Leather Side Tables, they comprise a family of occasional tables that can be used and combined in myriad ways. With a face veneer in natural oak, dark oak or walnut, they bring an inviting, natural aesthetic to this group – and thanks to the plywood material, they are light and mobile.

- **Table top and base:** moulded plywood.
- **Glides:** felt glides.

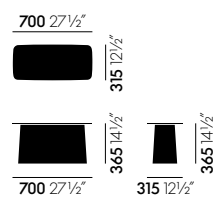
Dimensions



Wooden Side Table small

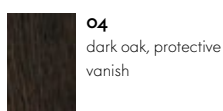
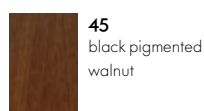


Wooden Side Table medium



Wooden Side Table large

Surfaces and colours



Plywood

