

materials

21

arrmet



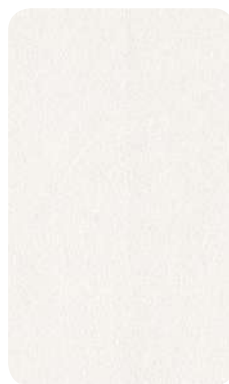
PP3
nero
black



PP5
antracite
anthracite



PP12
grafite
graphite



PP16
latte
milk



PP17
rosa pallido
pale pink



PP18
ghiaccio
ice



PP19
rosso ossido
oxide red



PP20
marrone
brown



PP21
verde scuro
dark green



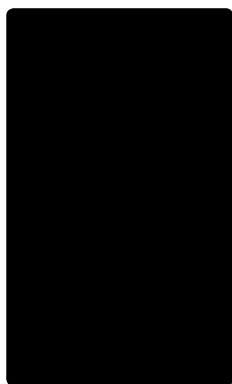
PP22
blu avio
air force blue



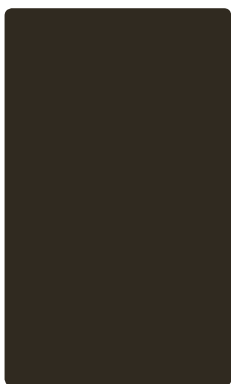
PP23
ruggine
rust



PP24
beige
beige



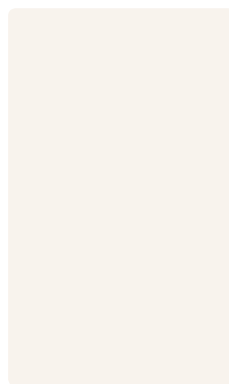
M7
nero
black



M8
marrone
brown



M12
grafite
graphite



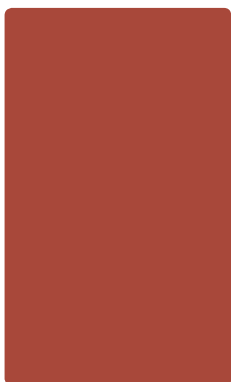
M16
latte
milk



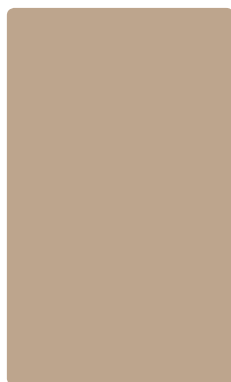
M19
rosso ossido
oxide red



M22
blu avio
air force blue



M23
ruggine
rust



M24
beige
beige



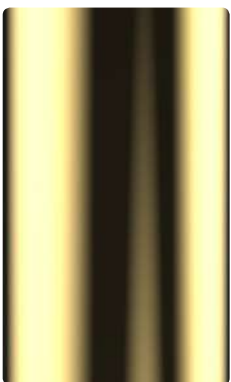
AL1
alluminio goffrato
embossed aluminium



AL2
alluminio satinato
satinated aluminium



CRO
cromato
chromed



SG
oro
gold



BR
ottone
brass



NK
nickel nero
black nickel



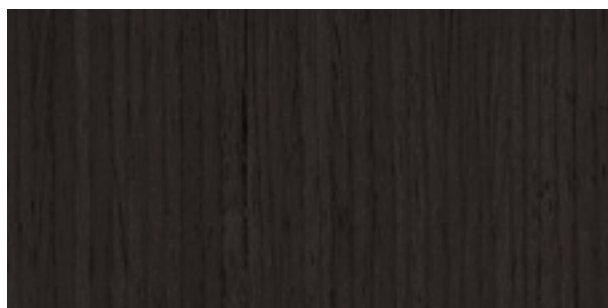
W1
frassino naturale
natural ashwood



W1
basic veneer naturale
natural basic veneer



W2
frassino nero
black ashwood



W2
basic veneer nero
black basic veneer



W3
frassino noce
walnut ashwood



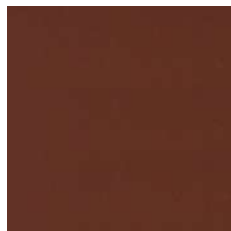
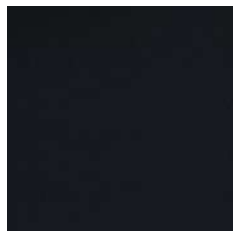
W3
basic veneer noce
walnut basic veneer



W4
frassino ciliegio
cherry ashwood



W4
basic veneer ciliegio
cherry basic veneer



LT1
bianco
white

LT2
nero
black

LT5
cognac
cognac

Resistenza al fuoco / Flame resistance
UNI 9175 (1M)

Solidità alla luce / Light fastness
UNI EN ISO 105-B02 (4-5)

CORDE | ROPES

CORDA | ROPE

anima (polipropilene 100%)

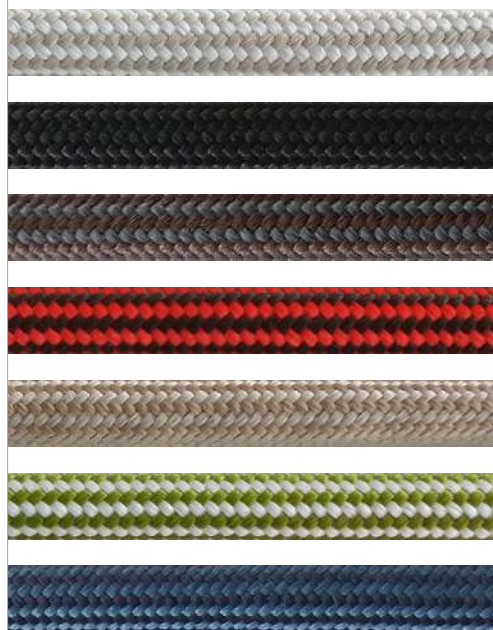
calza (poliestere 100%)

core (polypropylene 100%)

cover (polyester 100%)



Ø 8 mm



RP1 Bianco / White

RP2 Nero / Black

RP3 Marrone / Brown

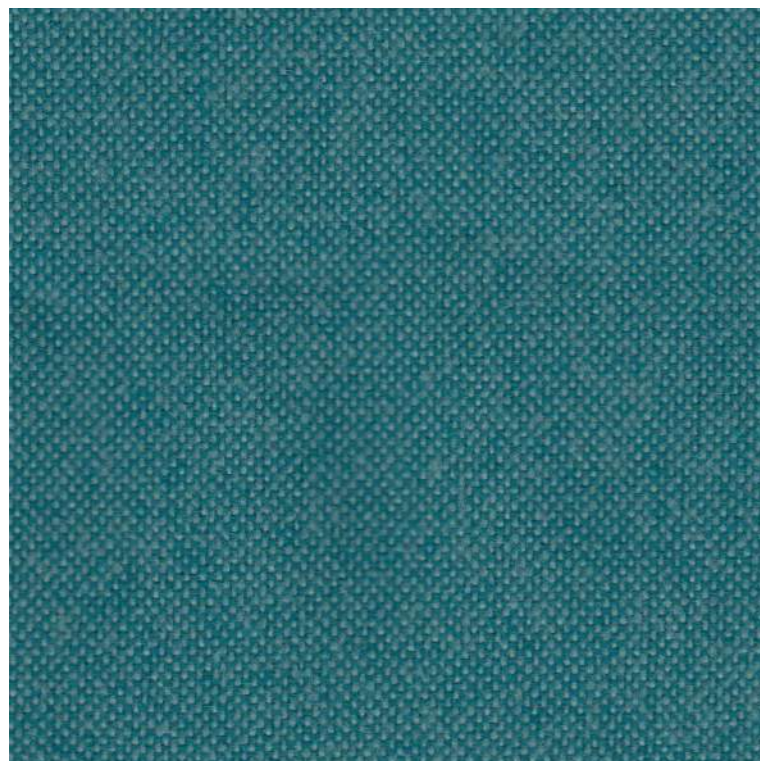
RP4 Rosso / Red

RP5 Beige / Beige

RP6 Verde / Green

RP7 Blu / Blue

Solidità alla luce / Light fastness
UNI EN ISO 105-B02 (7)



9609

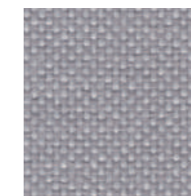
JET

Tipologia: trevira
Composizione: 100% poliestere (Trevira cs)
Larghezza: 140 cm
Peso: 365 g/mtl
Pulizia e manutenzione: contattare il fornitore al sito www.fidivi.com.

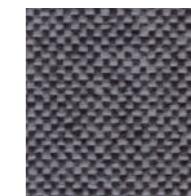
Type: trevira
Composition: 100% polyester (Trevira cs)
Width: 140 cm
Weight: 365 g/lm
Cleaning and maintenance: contact the supplier through website www.fidivi.com.



8001



9803



9294



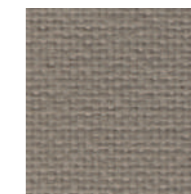
9806



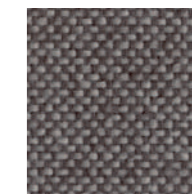
1001



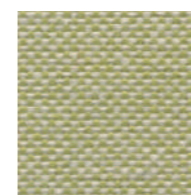
9110



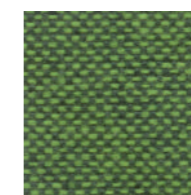
2024



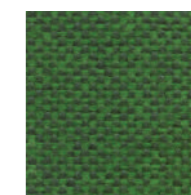
9109



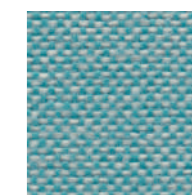
9701



9702



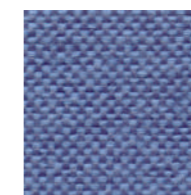
9704



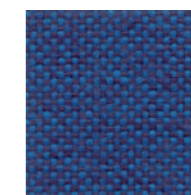
9610



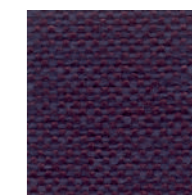
9600



9601



9603



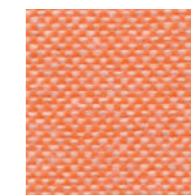
9607



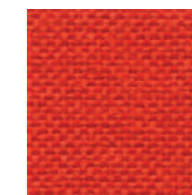
9302



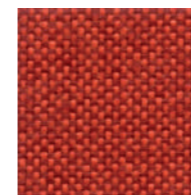
9304



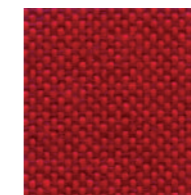
9301



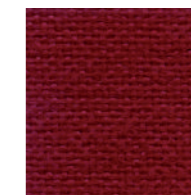
9403



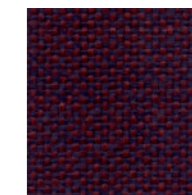
9402



9401



4018



9501

Resistenza al fuoco / Flame resistance

EN 1021-1/2
 BS 5852-5
 BS 7176 (Medium)
 CA TB 117-2013
 NFPA 260 (1)
 DIN 4102-1 (B1)
 ÖNORM A3800-1 (B1-Q1)
 NF D 60-013
 NF P 92-507 (M1)
 UNI 9175 (1IM)
 IMO FTP 307-8

Solidità alla luce / Light fastness

UNI EN ISO 105-B02 (6)

Resistenza all'abrasione / Abrasion resistance

UNI EN ISO 12947-2 (≈ 65.000 Martindale)

Solidità allo sfregamento / Fastness to rubbing

UNI EN ISO 105-X12 (a secco/dry rubbing 4-5)
 UNI EN ISO 105-X12 (a umido/wet rubbing 4-5)

Pilling

UNI EN ISO 12945-2 (5)

Note

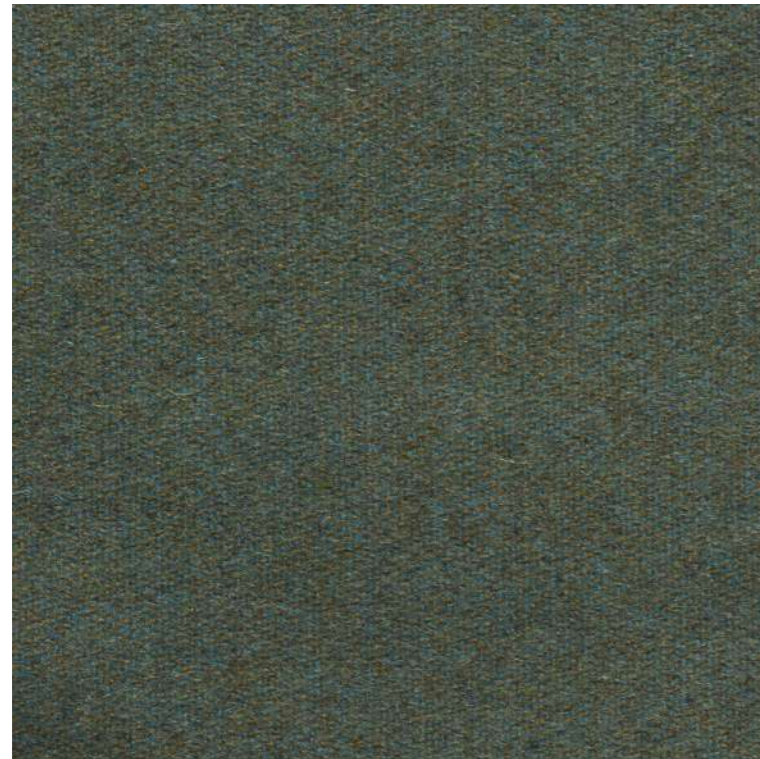
Leggere differenze di colore fra una partita e l'altra sono da considerarsi normali.

Consultare sempre i siti dei produttori per verificare eventuali aggiornamenti sui test.

Notes

Slight colour differences between lots must be considered normal.

Always consult manufacturers' websites to check for any test updates.

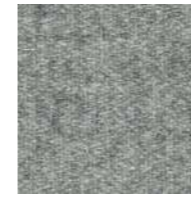


042

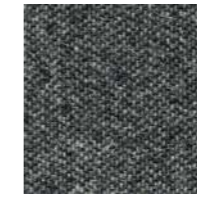
ST. MORITZ

Tipologia: lana
Composizione: 80% lana, 20% poliammide
Larghezza: 140 cm
Peso: 440 g/mtl
Pulizia e manutenzione: contattare il fornitore al sito www.linterno.it.

Type: wool
Composition: 80% wool, 20% polyamide
Width: 140 cm
Weight: 440 g/lm
Cleaning and maintenance: contact the supplier through website www.linterno.it.



155



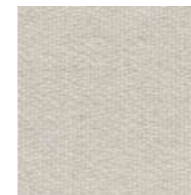
159



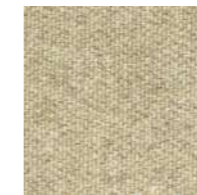
162



163



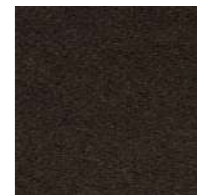
001



005



025



081



047



034



038



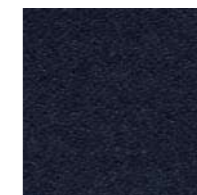
099



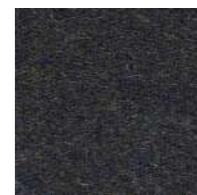
130



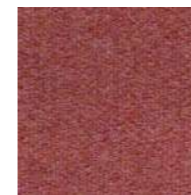
142



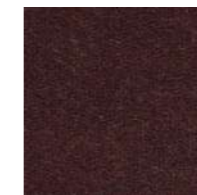
148



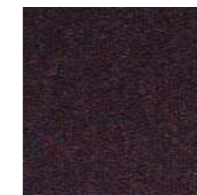
091



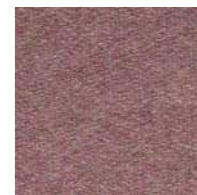
108



075



078



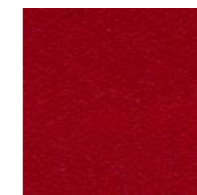
122



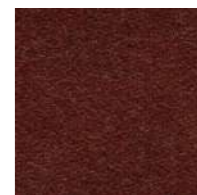
059



064



069



067

Resistenza al fuoco / Flame resistance
 EN 1021-1/2
 IMO FTP 307-8

Solidità alla luce / Light fastness
 UNI EN ISO 105-B02 (5)

Resistenza all'abrasione / Abrasion resistance
 UNI EN ISO 12947-2 (≈ 80.000 Martindale)

Solidità allo sfregamento / Fastness to rubbing
 UNI EN ISO 105-X12 (a secco/dry rubbing 4-5)
 UNI EN ISO 105-X12 (a umido/wet rubbing 4)

Pilling
 UNI EN ISO 12945-2 (3)

Note
 Leggere differenze di colore fra una partita e l'altra sono da considerarsi normali.

Consultare sempre i siti dei produttori per verificare eventuali aggiornamenti sui test.

Notes
 Slight colour differences between lots must be considered normal.

Always consult manufacturers' websites to check for any test updates.

L'INTERNO
 DI FRANCO FABBRI

For further information
linterno.it



149

SUPERB

Tipologia: velluto
Composizione: 100% poliestere
Larghezza: 140 cm
Peso: 400 g/m²
Pulizia e manutenzione: contattare il fornitore al sito www.flukso.it.

Type: velvet
Composition: 100% polyester
Width: 140 cm
Weight: 400 g/m²
Cleaning and maintenance: contact the supplier through website www.flukso.it.

Resistenza al fuoco / Flame resistance

EN 1021-1/2
 BS 5852-5
 DIN 4102-1 (B1)
 NF P 92-507 (M1)
 UNI 9175 (1IM)

Solidità alla luce / Light fastness

UNI EN ISO 105-B02 (≥5)

Resistenza all'abrasione / Abrasion resistance

UNI EN ISO 12947-2 (≈ 60.000 Martindale)

Solidità allo sfregamento / Fastness to rubbing

UNI EN ISO 105-X12 (a secco/dry rubbing 4)
 UNI EN ISO 105-X12 (a umido/wet rubbing 4)

Pilling

UNI EN ISO 12945-2 (5)

Note

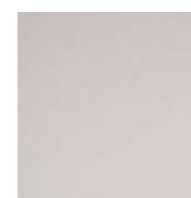
Leggere differenze di colore fra una partita e l'altra sono da considerarsi normali.

Consultare sempre i siti dei produttori per verificare eventuali aggiornamenti sui test.

Notes

Slight colour differences between lots must be considered normal.

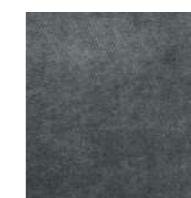
Always consult manufacturers' websites to check for any test updates.



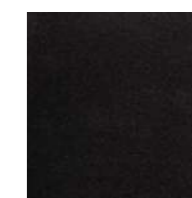
153



152



151



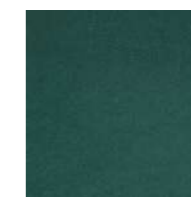
147



137



136



134



131



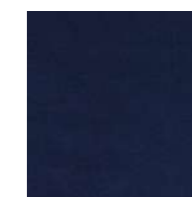
130



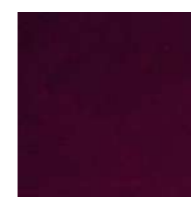
126



127



128



123



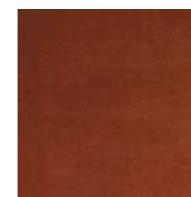
119



118



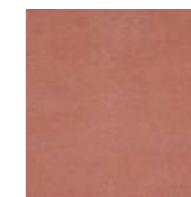
117



112



110



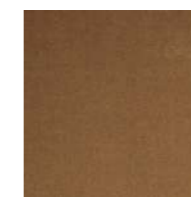
114



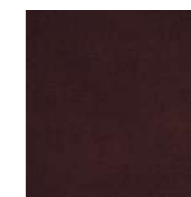
104



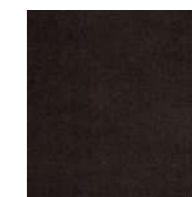
103



143



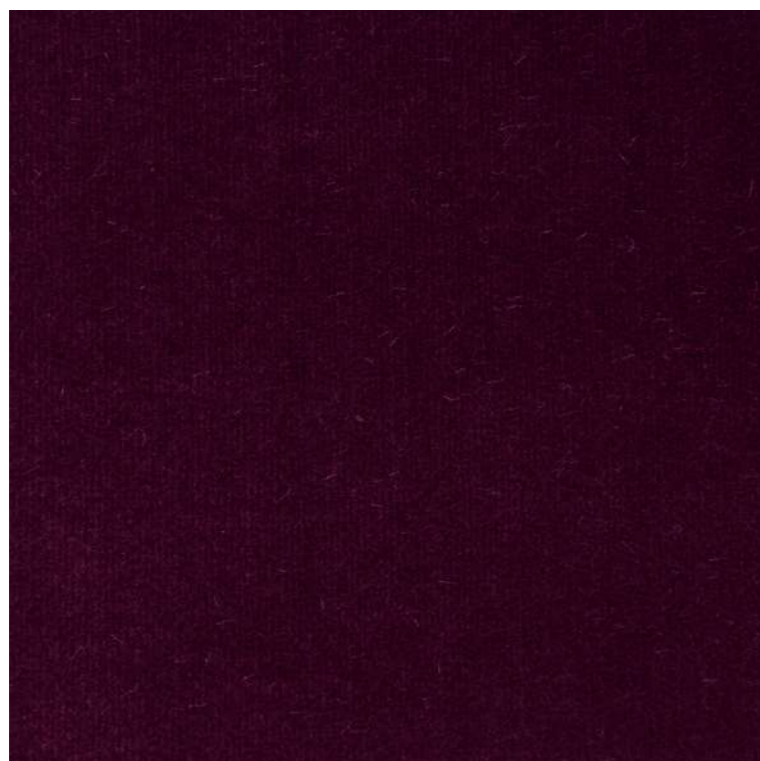
145



148



For further information
flukso.it



0530

NO_FIRE

Tipologia: velluto
Composizione: 100% trevira
Larghezza: 140 cm
Peso: 540/580 g/mtl
Pulizia e manutenzione: contattare il fornitore al sito www.lopificio.it.

Type: velvet
Composition: 100% trevira
Width: 140 cm
Weight: 540/580 g/lm
Cleaning and maintenance: contact the supplier through website www.lopificio.it.



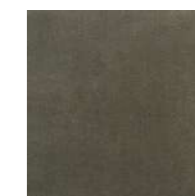
0010



0312



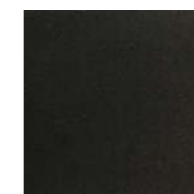
0257



0247



0219



0236



0147



0618



0628



0246



0900



0310

Resistenza al fuoco / Flame resistance

BS 5852-5
 CA TB 117-2013
 UNI 9175 (1M)

Solidità alla luce / Light fastness

UNI EN ISO 105-B02 (6-7)

Resistenza all'abrasione / Abrasion resistance

UNI EN ISO 12947-2 (≈ 140.000 Martindale)

Solidità allo sfregamento / Fastness to rubbing

UNI EN ISO 105-X12 (a secco/dry rubbing 4-5)
 UNI EN ISO 105-X12 (a umido/wet rubbing 4-5)

Pilling

UNI EN ISO 12945-2 (5)

Note

Leggere differenze di colore fra una partita e l'altra sono da considerarsi normali.

Consultare sempre i siti dei produttori per verificare eventuali aggiornamenti sui test.

Notes

Slight colour differences between lots must be considered normal.

Always consult manufacturers' websites to check for any test updates.



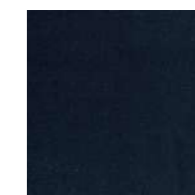
0719



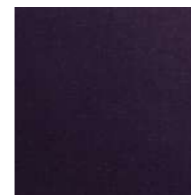
0720



0715



0837



0574



0505



0527



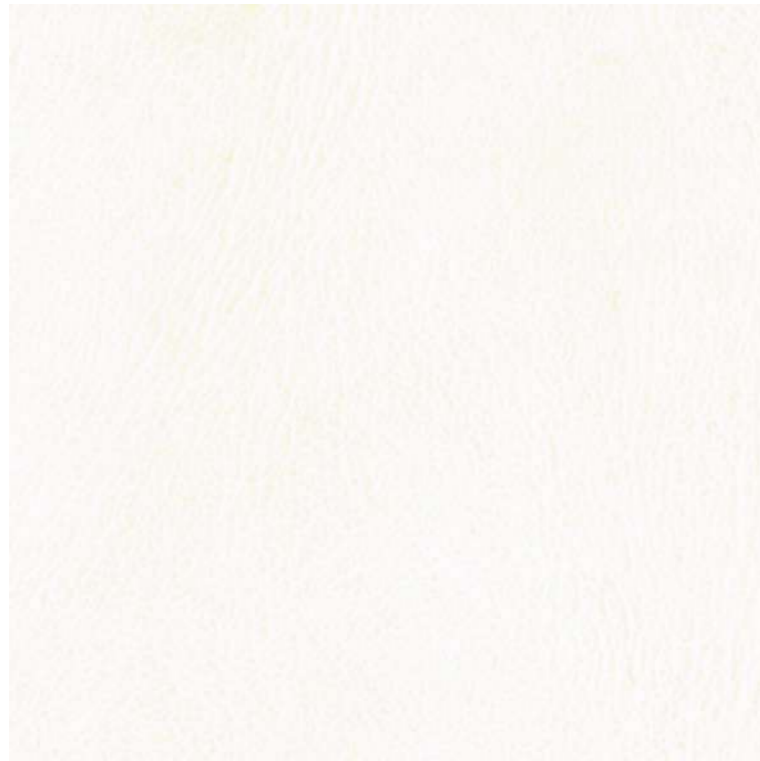
0513



0425



For further information
lopificio.it



111

Resistenza al fuoco / Flame resistance

EN 1021-1/2
BS 5852-0/1/5(*)
CA TB 117-2013
DIN 4102-1 (B1)(*)
NF P 92-507 (M1)(*)
UNI 9175 (1M)
IMO FTP 307-8

Solidità alla luce / Light fastness

UNI EN ISO 105-B02 (≥7)

Resistenza all'abrasione / Abrasion resistance

UNI EN ISO 12947-2 (≈ 200.000 Martindale)

Solidità allo sfregamento / Fastness to rubbing

UNI EN ISO 105-X12 (a secco/dry rubbing ≥5)
UNI EN ISO 105-X12 (a umido/wet rubbing ≥5)

* per passare il test è necessario un pre-trattamento.

* to pass this test, flame retardant treatment is necessary.

MAGNUM

Tipologia: spalmato

Composizione: 88% polivinil cloruro, 7% poliestere, 4% cotone, 1% poliuretano

Larghezza: 140 cm

Peso: 715 g/m²

Pulizia e manutenzione: contattare il fornitore al sito www.abitex.eu.

Type: eco-leather

Composition: 88% polyvinyl chloride, 7% polyester, 4% cotton, 1% polyurethane

Width: 140 cm

Weight: 715 g/m²

Cleaning and maintenance: contact the supplier through website www.abitex.eu.

Note

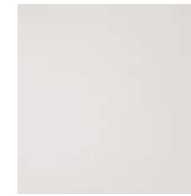
Leggere differenze di colore fra una partita e l'altra sono da considerarsi normali.

Consultare sempre i siti dei produttori per verificare eventuali aggiornamenti sui test.

Notes

Slight colour differences between lots must be considered normal.

Always consult manufacturers' websites to check for any test updates.



105



603



602



200



100



103



400



406



503



407



404



405



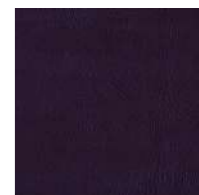
310



304



302



313



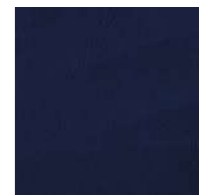
001



706



701



700



500



804



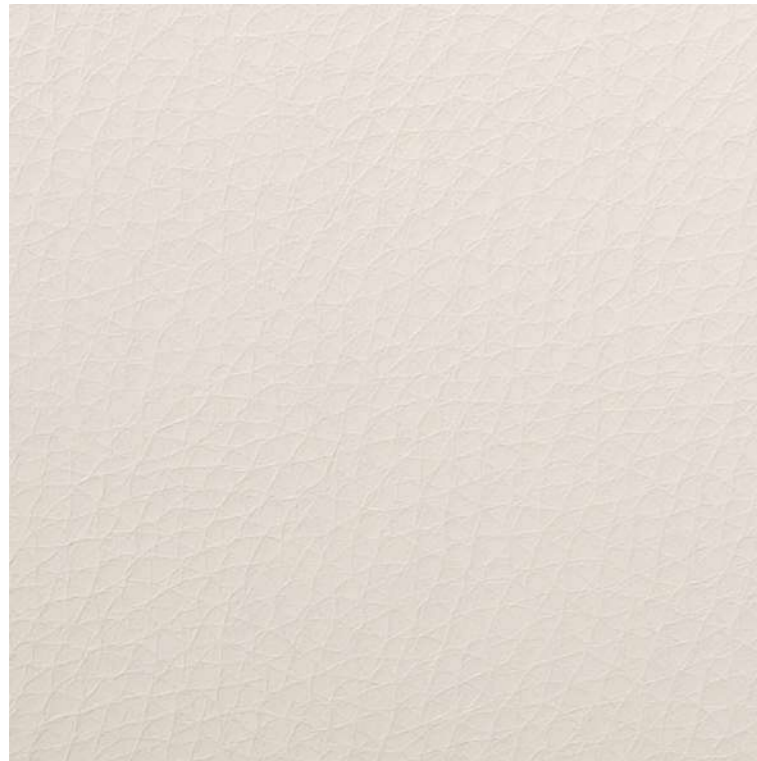
803



002

ABITEX

For further information
abitex.eu

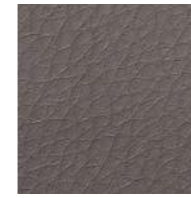


6702

DOLCE

Tipologia: spalmato
Composizione: 100% poliuretano
Larghezza: 137 cm
Peso: 370 g/m²
Pulizia e manutenzione: contattare il fornitore al sito www.spradling.eu.

Type: eco-leather
Composition: 100% polyurethane
Width: 137 cm
Weight: 370 g/m²
Cleaning and maintenance: contact the supplier through website www.spradling.eu



6727



6701



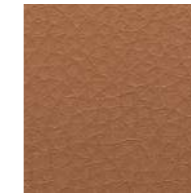
6706



6708



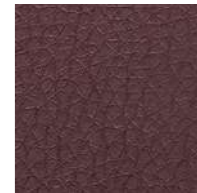
6712



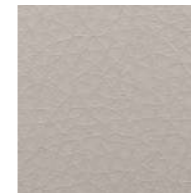
6709



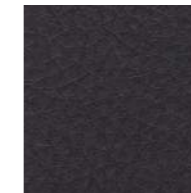
6713



6714



6726



6728

Resistenza al fuoco / Flame resistance

EN 1021-1/2
 CA TB 117-2013
 IMO FTP 307-8

Resistenza all'abrasione / Abrasion resistance

UNI EN ISO 12947-2 (≈ 300.000 Martindale)

Note

Leggere differenze di colore fra una partita e l'altra sono da considerarsi normali.

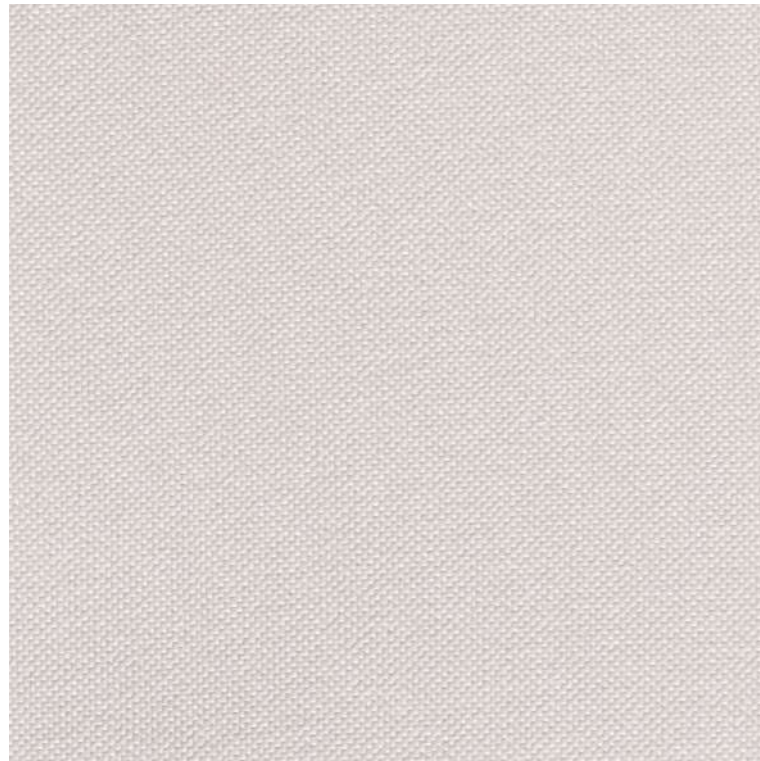
Consultare sempre i siti dei produttori per verificare eventuali aggiornamenti sui test.

Notes

Slight colour differences between lots must be considered normal.

Always consult manufacturers' websites to check for any test updates.





4004

SILVERTEX

Tipologia: spalmato
Composizione: 100% vinile
Larghezza: 137 cm
Peso: 685 g/m²
Pulizia e manutenzione: contattare il fornitore al sito www.spradling.eu.

Type: eco-leather
Composition: 100% vinyl
Width: 137 cm
Weight: 685 g/m²
Cleaning and maintenance: contact the supplier through website www.spradling.eu

Resistenza al fuoco / Flame resistance

EN 1021-1/2
 CA TB 117-2013
 NF P 92-507 (M2)
 DIN 4102-1 (B2)
 ÖNORM A3800-1 (B1-Q1)
 UNI 9175 (1IM)
 IMO FTP 307-8
 FAR/JAR 25.853

Resistenza all'abrasione / Abrasion resistance

UNI EN ISO 12947-2 (≈ 300.000 Martindale)

Note

Leggere differenze di colore fra una partita e l'altra sono da considerarsi normali.

Consultare sempre i siti dei produttori per verificare eventuali aggiornamenti sui test.

Notes

Slight colour differences between lots must be considered normal.

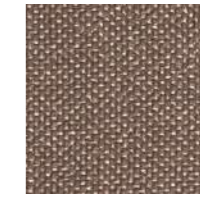
Always consult manufacturers' websites to check for any test updates.



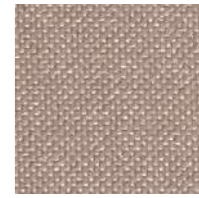
1077



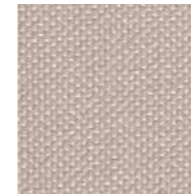
1051



0009



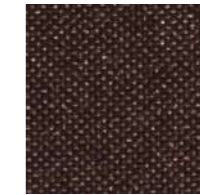
0002



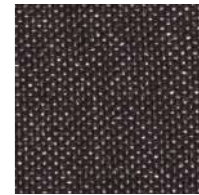
0001



1010



0005



4024



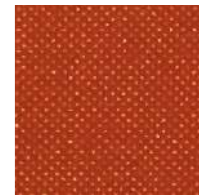
0073



6065



2003



6061



7002



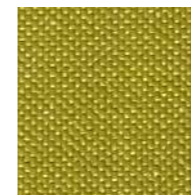
6004



2064



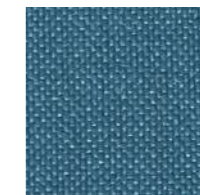
2011



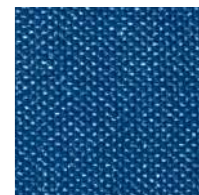
5008



5020



3001



3066



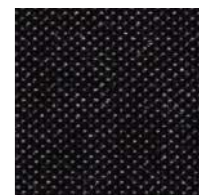
3007



4001

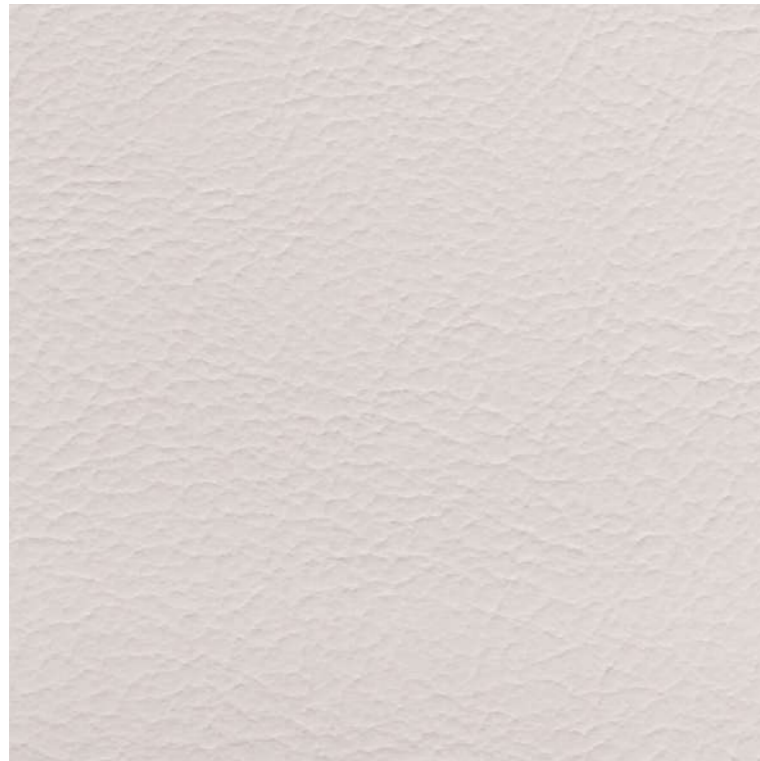


4002



9001





8032

VALENCIA

Tipologia: spalmato
Composizione: 100% vinile
Larghezza: 137 cm
Peso: 650 g/m²
Pulizia e manutenzione: contattare il fornitore al sito www.spradling.eu.

Type: eco-leather
Composition: 100% vinyl
Width: 137 cm
Weight: 650 g/m²
Cleaning and maintenance: contact the supplier through website www.spradling.eu



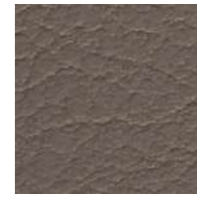
1048



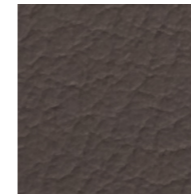
1050



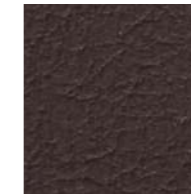
0034



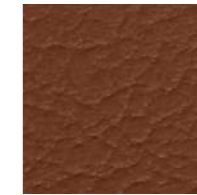
5002



4041



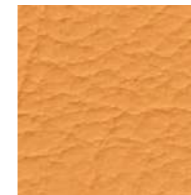
0020



2115



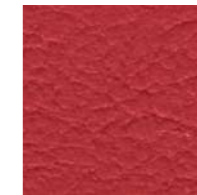
2111



6013



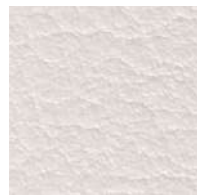
2075



2074



2062



8020



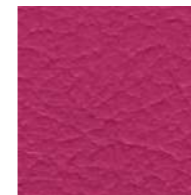
1020



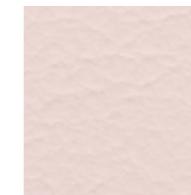
4020



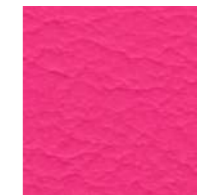
6020



2002



2113



2021



2110

Resistenza al fuoco / Flame resistance

EN 1021-1/2
 CA TB 117-2013
 NF P 92-507 (M2)
 DIN 4102-1 (B2)
 ÖNORM A3800-1 (B1-Q1)
 UNI 9175 (1IM)
 IMO FTP 307-8
 FAR/JAR 25.853

Resistenza all'abrasione / Abrasion resistance

UNI EN ISO 12947-2 (≈ 300.000 Martindale)

Note

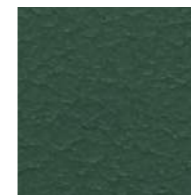
Leggere differenze di colore fra una partita e l'altra sono da considerarsi normali.

Consultare sempre i siti dei produttori per verificare eventuali aggiornamenti sui test.

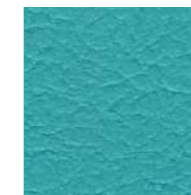
Notes

Slight colour differences between lots must be considered normal.

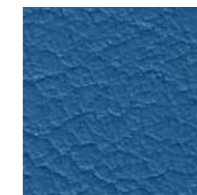
Always consult manufacturers' websites to check for any test updates.



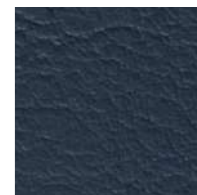
5069



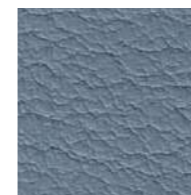
5057



3069



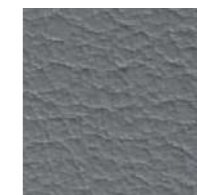
2108



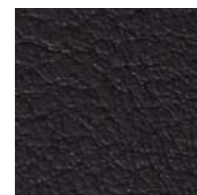
4042



4040

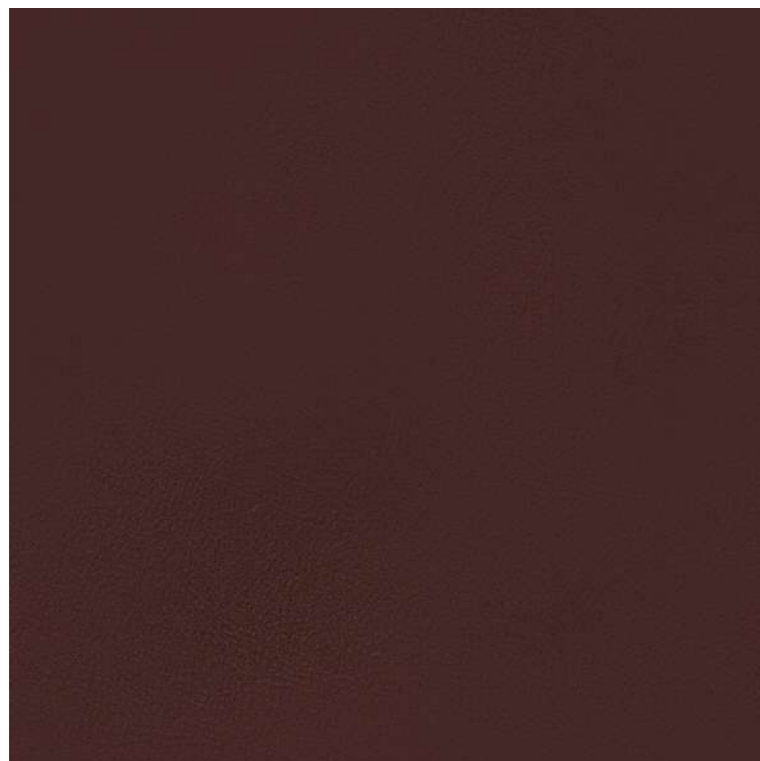


4043



9035



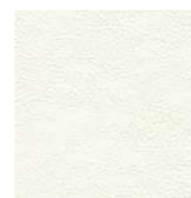


15

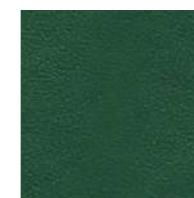
EVE

Tipologia: spalmato biobased
Composizione: 40% PVC, 40% componenti vegetali, 20% cotone biologico.
Larghezza: 140 cm
Peso: 650 g/m²
Pulizia e manutenzione: contattare il fornitore al sito www.flukso.it.

Type: bio-based eco-leather
Composition: 40% PVC, 40% plant components, 20% organic cotton.
Width: 140 cm
Weight: 650 g/m²
Cleaning and maintenance: contact the supplier through website www.flukso.it.



1



5



6



7



8



10



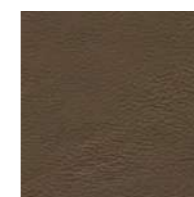
11



12



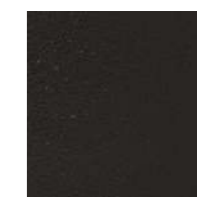
13



14



17



18

Resistenza al fuoco / Flame resistance

EN 1021-1/2
 BS 5852-5
 CA TB 117-2013
 NF P 92-507 (M2)
 UNI 9175 (1IM)

Solidità alla luce / Light fastness

UNI EN ISO 105-B02 (6)

Resistenza all'abrasione / Abrasion resistance

UNI EN ISO 12947-2 (≈ 100.000 Martindale)

Solidità allo sfregamento / Fastness to rubbing

UNI EN ISO 105-X12 (a secco/dry rubbing 5)
 UNI EN ISO 105-X12 (a umido/wet rubbing 5)

Note

Leggere differenze di colore fra una partita e l'altra sono da considerarsi normali.

Consultare sempre i siti dei produttori per verificare eventuali aggiornamenti sui test.

Notes

Slight colour differences between lots must be considered normal.

Always consult manufacturers' websites to check for any test updates.





820

LEATHER**Tipologia:** pelle**Composizione:** 100% pelle

Pulizia e manutenzione: per pulire macchie o gocce di liquido asciugare delicatamente l'area interessata con un panno inumidito d'acqua tiepida. Fare attenzione a non bagnare eccessivamente l'area, altrimenti tamponare ulteriormente con un panno asciutto. Consigliamo di non strofinare mai la superficie troppo energicamente.

Type: leather**Composition:** 100% leather

Cleaning and maintenance: to clean stains or drops of liquid, gently wipe the affected area gently with a cloth dampened with warm water. Be careful not to wet the area excessively, otherwise dab with a dry cloth. We recommend never rubbing the surface too hard.

Resistenza al fuoco / Flame resistance

BS 5852-0/1
CA TB 117-2013
IMO FTP 307-8

Solidità alla luce / Light fastness

UNI EN ISO 105-B02 (8)

Solidità allo sfregamento / Fastness to rubbing

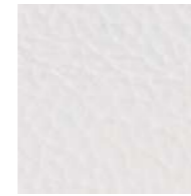
UNI EN ISO 11640 (a secco/dry rubbing 4-5)
UNI EN ISO 11640 (a umido/wet rubbing 4-5)

Note

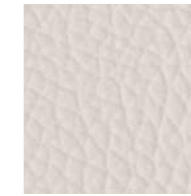
Leggere differenze di colore fra una partita e l'altra sono da considerarsi normali.

Notes

Slight colour differences between lots must be considered normal.



810



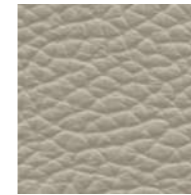
872



812



813



930



931



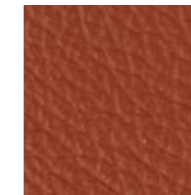
840



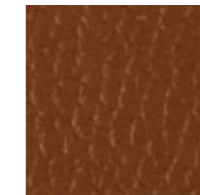
844



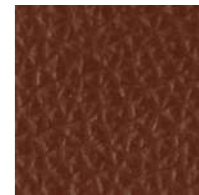
826



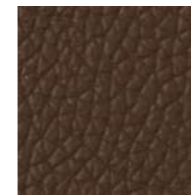
841



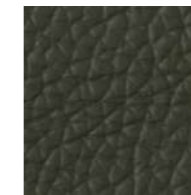
823



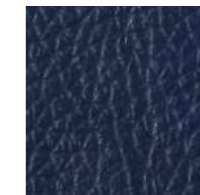
822



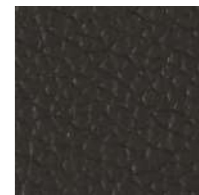
824



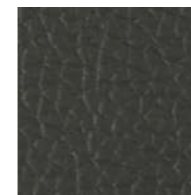
833



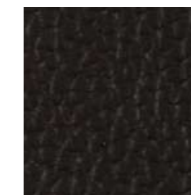
856



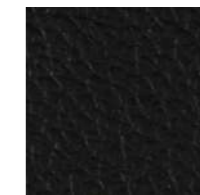
859



858



825



860

FIELD 2

trevira (100% fibra di poliestere) / trevira (100% polyester fiber)

PATIO

trevira (100% fibra di poliestere) / trevira (100% polyester fiber)

REMIX 3

lana (90% lana, 10% nylon) / wool (90% wool, 10% nylon)

RE-WOOL

lana (45% lana vergine, 45% lana riciclata, 10% nylon) / wool (45% new wool, 45% recycled wool, 10% nylon)

HERO

lana (96% lana vergine, 4% nylon) / wool (96% new wool, 4% nylon)

CANVAS 2

lana (90% lana vergine, 10% nylon) / wool (90% new wool, 10% nylon)

STEELCUT TRIO 3

lana (90% lana vergine pettinata, 10% nylon) / wool (90% worsted new wool, 10% nylon)

VIDAR 3

lana (94% lana vergine, 6% nylon) / wool (94% new wool, 6% nylon)

DIVINA MELANGE 3

lana (100% lana vergine) / wool (100% new wool)

GENTLE 2

lana (60% lana, 20% polimmidica, 20% poliestere) / wool (60% wool, 20% polyamide, 20% polyester)

HARALD 3

velluto (100% cotone) / velvet (100% cotton)

	DIVINA MELANGE 3	STEELCUT TRIO 3	REMIX 3	RE-WOOL	HERO	CANVAS 2	FIELD 2	VIDAR 3	PATIO	GENTLE 2	HARALD 3
EN 1021-1/2	●	●	●	●	●	●	●	●	●	●	●
BS 5852	● 0/1/5	● 0/1/3/5(*)	● 0/1/3/5(*)	● 0/1/3/5(*)	● 0/1/5(*)	● 0/1/3/5(*)	● 5	● 2/3/5(*)	● 0/1/5	● 0/1	
CA TB 117-2013	●	●	●	●	●	●	●	●	●	●	
DIN 4102-1							● B1	● B2	● B1	● B2	
NF P 92-507							● M1		● M1		
NF D 60-013	●	●	●	●	●	●		●	●		
ÖNORM A3800-1	● B1-Q1	● B1-Q1	● B1-Q1	● B1-Q1		● B1-Q1	● B1-Q1	● B1-Q1	● B1-Q1	● B1-Q1	
UNI 9175	● 1IM	● 1IM	● 1IM	● 1IM	● 1IM	● 1IM	● 1IM	● 1IM	● 1IM	● 1IM	
IMO FTP 307-8	●	●	● 7(*)/8	●	● 7(*)/8	●	●	●	●	●	
FAR/JAR 25.853							●				
NFPA 260	● 1	● 1	● 1			● 1					
AS.NZS 1530.3	●	●	●	●		●					●
AS.NZS 3837		● 2	● 2		● 2						● 1
Solidità alla luce											
Light fastness	5-7	5-7	6-7	5-7	5-7	6-7	5-7	5-7	7	6-7	5-6
UNI EN ISO 105-B02											
Resistenza all'abrasione											
Abrasion resistance	45.000	100.000	100.000	100.000	45.000	100.000	80.000	100.000	50.000	90.000	100.000
UNI EN ISO 12947-2	⌘	⌘	⌘	⌘	⌘	⌘	⌘	⌘	⌘	⌘	⌘
Martindale											
Solidità allo sfregamento											
Fastness to rubbing	● 4-5	● 4-5	● 4-5	● 4-5	● 4-5	● 4-5			● 4-5	● 4-5	
UNI EN ISO 105-X12											
Pilling											
UNI EN ISO 12945-2	3	4	4	4	3-4	4	4-5	4	4-5	4-5	4-5
Uso											
Use	● interno/ indoor	●	●	●	●	●	●	●		●	●
									● esterno/ outdoor		

Pulizia e manutenzione: contattare il fornitore al sito kvadrat.dk. **Cleaning and maintenance:** contact the supplier through kvadrat.dk
 * per passare il test è necessario un pre-trattamento. *To pass this test flame retardant treatment is necessary.

Nella stampa su carta la tonalità dei colori non può essere riprodotta fedelmente. Arrmet Srl si riserva la facoltà di apportare modifiche in qualsiasi momento e senza preavviso.

During printing process, colour tones may not be reproduced faithfully. Arrmet Srl reserves the right to make changes at any time and without any previous notice.

arrmet

arrmet srl

via alessandro volta 8

33044 manzano (ud) italy

ph. +39 0432 937065

fax +39 0432 740102

PI/CF: IT 00452180300

mail@arrmet.it

www.arrmet.it