

FABRIC & LEATHER

OVERVIEW



HAY FABRIC & LEATHER OVERVIEW

HAY's wide assortment of fabrics and leathers is offered in a good variety of textures, weaves, and colours, all carefully selected for their superior quality, expression, durability, strength, and functionality. All the fabrics are chosen for their ability to complement HAY's extensive assortment of furniture and can be used to cover chairs, stools, and sofas in many different domestic and contract environments.

In this overview you find colours and technical information about all fabrics and leathers in HAY's standard assortment. Furthermore you will find information about the upholstery possibilities for the different furniture models.

CONTENT

FABRIC GROUP 1

ATLAS	3
LINARA*	3
LINT*	3
METAPHOR	4
MODE	4
PLANAR*	5
RANDOM FADE	5
REMIX 3	6
SURFACE BY HAY	6
SWARM	7
VALENCIA™	7

FABRIC GROUP 2

FAIRWAY	8
FIELD 2	8
FLAMIBER*	8
LINEN GRID*	9
LOLA*	9
MAGLIA	9
MELANGE NAP	10
NICO	10
OLAVI BY HAY	11
OSUMI*	11
RELATE	11
STEELCUT 3	12
STEELCUT TRIO 3	12
TADAO	13

FABRIC GROUP 3

COMPOUND	14
DOT 1682	14
DIVINA 3	15
DIVINA MD	15
DIVINA MELANGE 3	16
FIORD 2	16
RE-WOOL	17
RODEN*	17
RUSKIN*	17
STEELCUT QUARTET	18
TARTAGLIA	18

FABRIC GROUP 4

BOLGHERI	19
CANVAS 2	19
ENCIRCLE	19
HALLINGDAL 65	20
ICE FR*	20
RAAS	21

FABRIC GROUP 5

BALDER 3	22
HAKU*	22
HARALD 3*	22
LOFT	23
SIERRA LEATHER	23

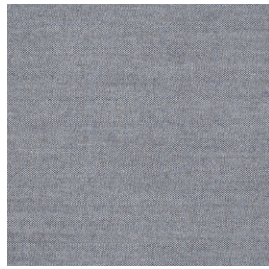
FABRIC GROUP 6

CODA 2	24
VIDAR 4	24
CALIFORNIA LEATHER	25
NEVADA LEATHER*	25
SENSE LEATHER	25

UPHOLSTERY MATRIX

CHAIRS	26
STOOLS & BAR STOOLS	31
LOUNGE	32
SOFAS	34

FABRIC GROUP 1



ATLAS

Kvadrat
Design by Margrethe Odgaard

COMPOSITION
90% New wool
(worsted),
10% Nylon

DURABILITY
100.000 Martindale

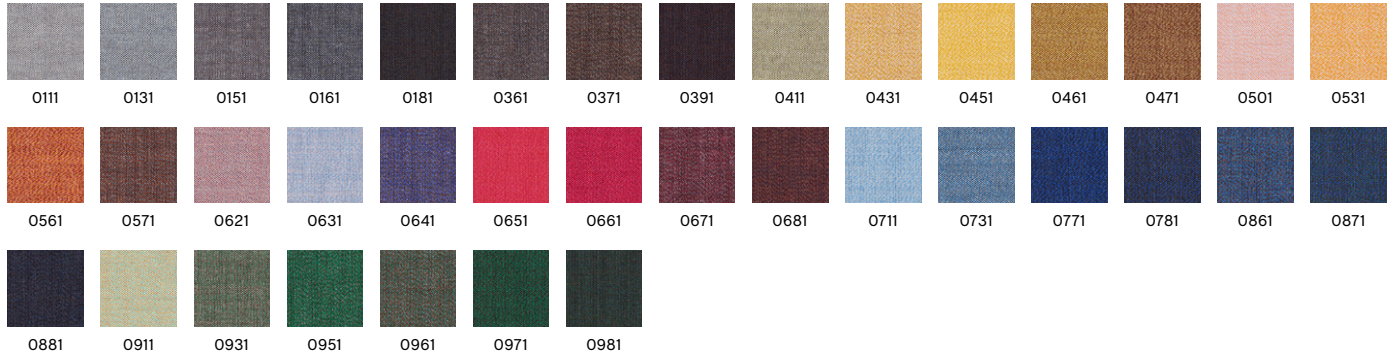
LIGHTFASTNESS
6-7

PILLING
4-5

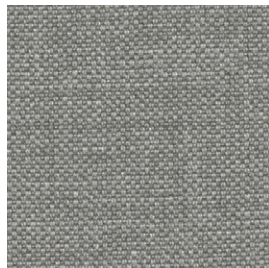
FIRE TESTS*
EN 1021-1/2
US Cal. Bull. 117-2013
BS 5852 Crib 5 with
treatment

SUSTAINABILITY
EU Ecolabel
Greenguard Gold
HPD
EPD

0131



Recommended for contract use
*Find more tests and information at kvadrat.dk



LINARA*

Romo

COMPOSITION
63% Cotton,
37% Linen

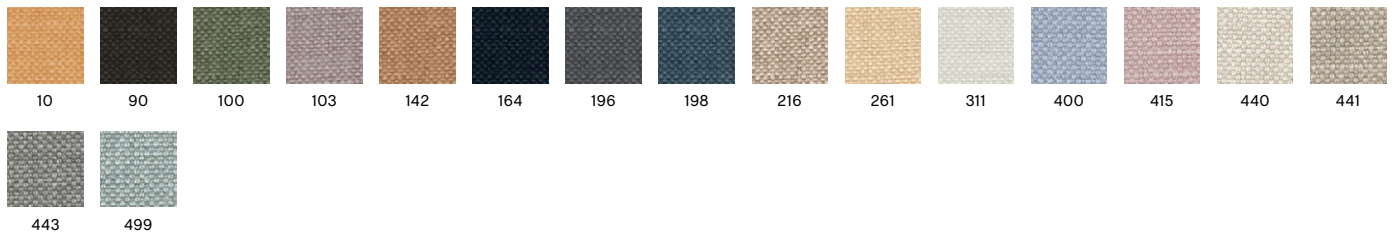
DURABILITY
36.000 Martindale

LIGHTFASTNESS
5-6

PILLING
4

FIRE TESTS
EN 1021-1/2 with FR
treatment
US Cal. Bull. 117-2013
BS 5852 Crib 5 with
treatment

443



*Only available in selected colours



LINT*

HAY
Cotton Linen 2

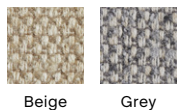
COMPOSITION
40% Acrylic, 28%
Cotton, 19% Viscose,
8% Linen, 5%
Polyester

DURABILITY
18.000 Martindale

LIGHTFASTNESS
5

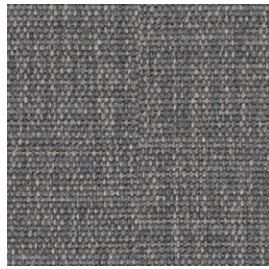
PILLING
2-3

Grey



*Not available in UK

FABRIC GROUP 1



METAPHOR

Maharam

COMPOSITION
100% Polyester

DURABILITY
90.000 Martindale

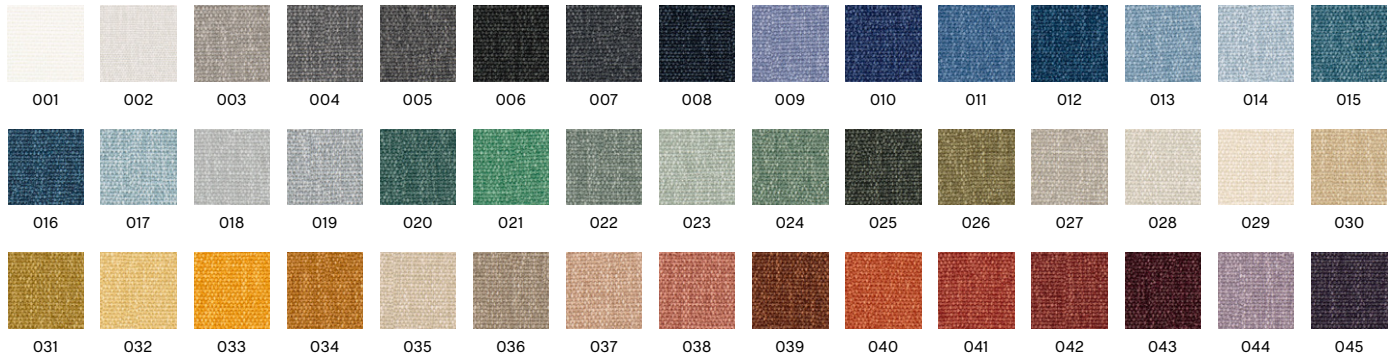
LIGHTFASTNESS
5-6

PILLING
3-4

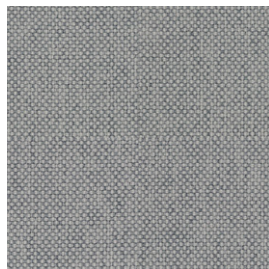
FIRE TESTS
EN 1021-1/2 with
FR treatment
US Cal. Bull. 117-2013
BS 5852 Crib 5 with
treatment

SUSTAINABILITY
Greenguard Gold
FR Free

004



Recommended for contract use



MODE

Maharam

COMPOSITION
80% Post-Consumer
recycled polyester,
20% Polyester

DURABILITY
100.000 Double rubs
(Wyzenbeek)

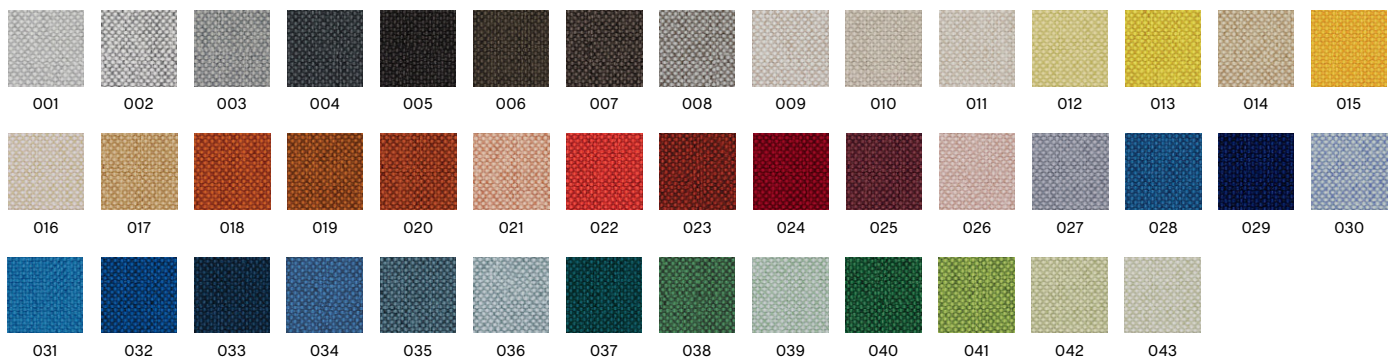
LIGHTFASTNESS
40+ Hours

PILLING
CLASS 4

FIRE TESTS
EN 1021-1/2 with
FR treatment
US Cal. Bull. 117-2013
BS 5852 Crib 5 with
treatment

SUSTAINABILITY
Greenguard Gold
Contains Recycled
Content
FR Free

003



Recommended for contract use

FABRIC GROUP 1



PLANAR*
HAY

COMPOSITION
60% Cotton,
40% Linen

DURABILITY
40.000 Martindale

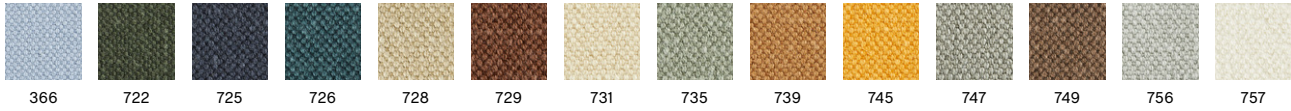
LIGHTFASTNESS
5

PILLING
4

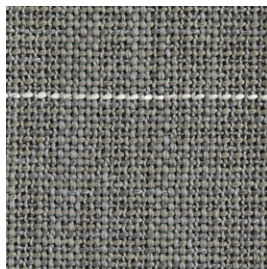
FIRE TESTS
US Cal. Bull. 117-2013

SUSTAINABILITY
OEKO-TEX®
STANDARD 100

747



*Not available in UK



RANDOM FADE
HAY

Cotton Linen 2

COMPOSITION
30% Acrylic, 25%
Wool, 21% Polyester,
14% Cotton, 10%
Polyamide

DURABILITY
35.000 Martindale

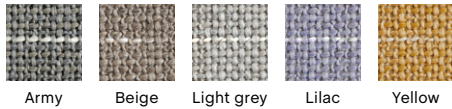
LIGHTFASTNESS
5

PILLING
3-4

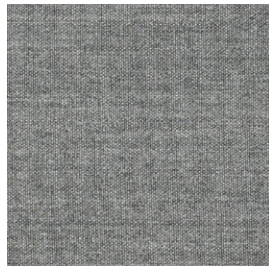
FIRE TESTS
EN 1021-1/2 with FR
treatment

SUSTAINABILITY
OEKO-TEX®
STANDARD 100

Army



FABRIC GROUP 1



REMIX 3

Kvadrat
Design by Giulio Ridolfo

COMPOSITION
90% new wool
(worsted),
10% nylon

DURABILITY
100.000 Martindale

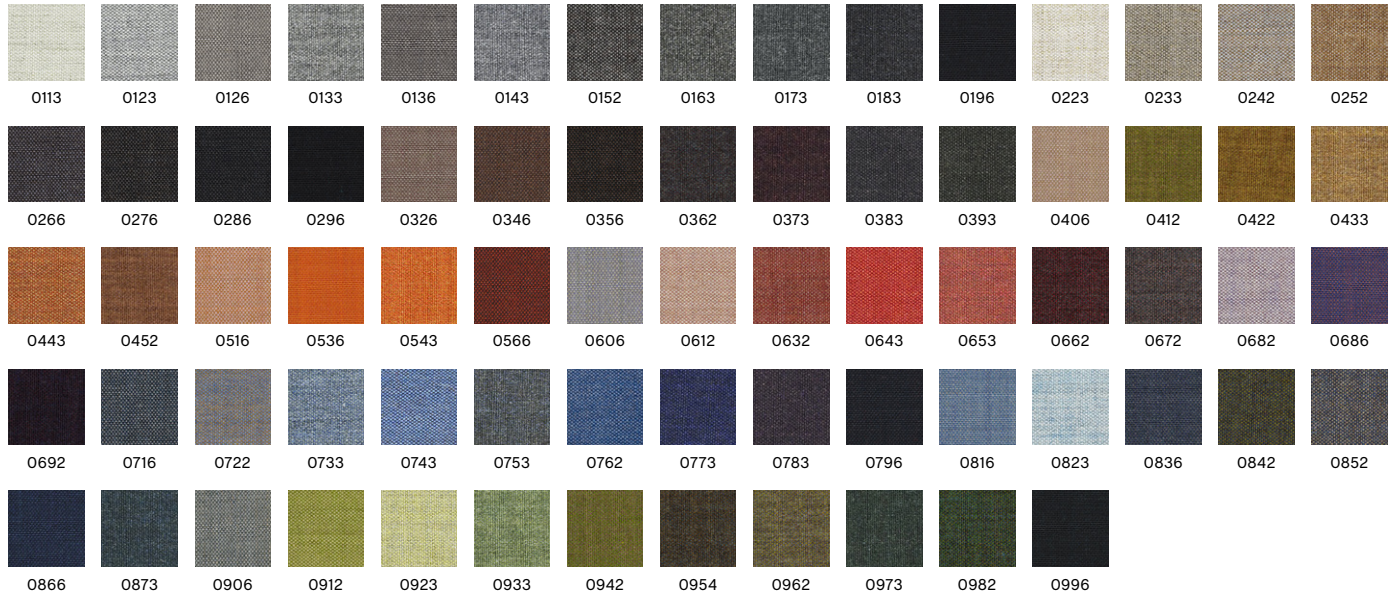
LIGHTFASTNESS
5-7

PILLING
4

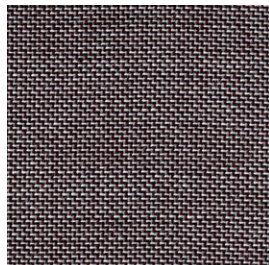
FIRE TESTS*
EN 1021-1/2
US Cal. Bull. 117-2013
BS 5852 Crib 5 with
treatment

SUSTAINABILITY
EU Ecolabel
Greenguard Gold
HPD
EPD

0133



Recommended for contract use
*Find more tests and information at kvadrat.dk



SURFACE BY HAY

Kvadrat
Design by Louise Sigvardt & HAY

COMPOSITION
90% New wool
(worsted),
10% Nylon

DURABILITY
100.000 Martindale

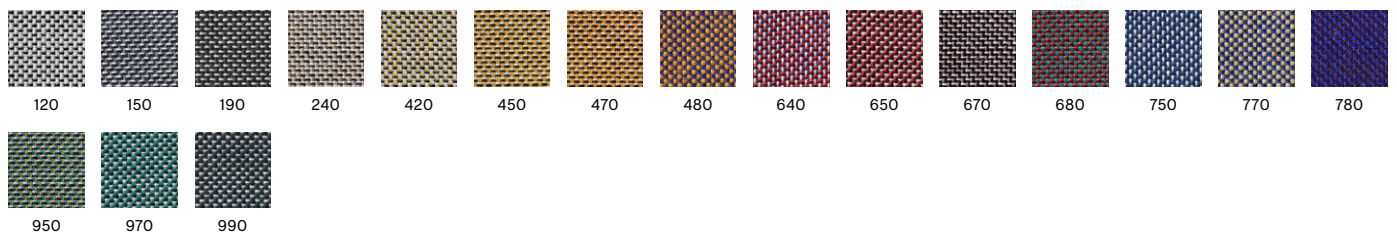
LIGHTFASTNESS
5-6

PILLING
3-4

FIRE TESTS
EN 1021-1/2
US Cal. Bull. 117-2013
BS 5852 Crib 5 with
treatment

SUSTAINABILITY
EU Ecolabel
Greenguard Gold

670



Recommended for contract use

FABRIC GROUP 1



SWARM

HAY
Cotton Linen 2

COMPOSITION
31% Acrylic, 17%
Cotton, 8% Linen,
36% Polyester, 8%
Viscose

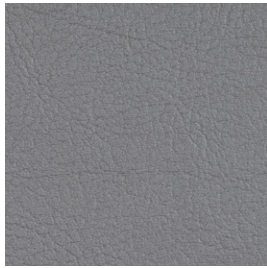
DURABILITY
28.000 Martindale

LIGHTFASTNESS
5

PILLING
3-4

FIRE TESTS
EN 1021-1/2 with FR
treatment

Multi colour



VALENCIA™

Spradling

COMPOSITION
Vinyl / Urethane
Topcoat

DURABILITY
300.000 Martindale

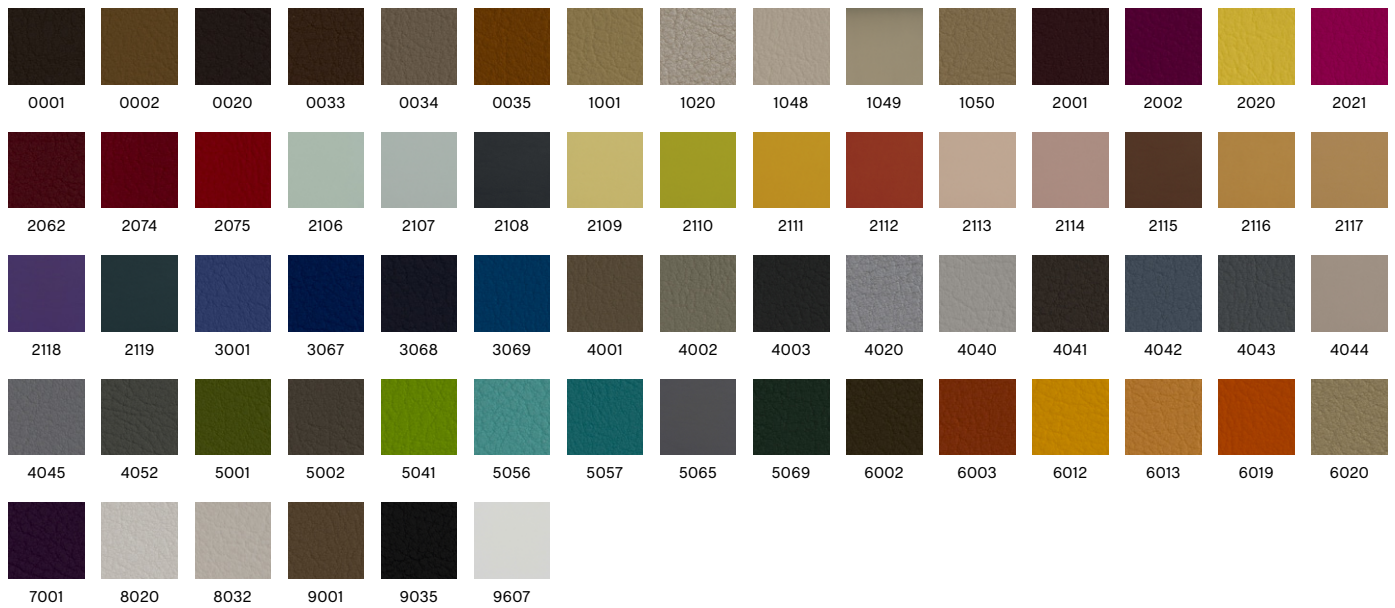
LIGHTFASTNESS
4-5

COLOUR
FASTNESS TO
RUBBING DRY
5-4/5

COLOUR
FASTNESS TO
RUBBING WET
5-4/5

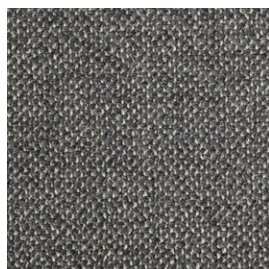
FIRE TESTS
EN 1021-1/2
US Cal. Bull. 117-2013
BS 5852 Crib 5
(Valencia C5)

4020



Recommended for contract use

FABRIC GROUP 2



FAIRWAY

HAY
Textures

COMPOSITION
34% Acrylic, 26% Polyester, 22% Wool, 12% Cotton, 2% Viscose, 2% Linen

DURABILITY
60.000 Martindale

LIGHTFASTNESS
5

PILLING
4

FIRE TESTS
EN 1021-1/2
US Cal. Bull. 117-2013
with FR treatment

SUSTAINABILITY
OEKO-TEX®
STANDARD 100

Grey 307-201

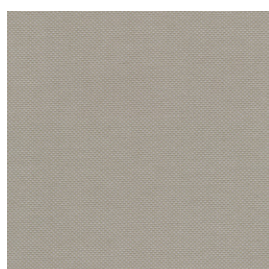


Grey 307-201



Dark blue 308-288

Recommended for contract use



FIELD 2

Kvadrat

COMPOSITION
100% Trevira CS

DURABILITY
80.000 Martindale

LIGHTFASTNESS
7

PILLING
4-5

FIRE TESTS*
EN 1021-1/2
US Cal. Bull. 117-2013
BS 5852 Crib 5

SUSTAINABILITY
EU Ecolabel
Greenguard Gold

0233



0123



0132



0142



0173



0182



0192



0222



0233



0242



0343



0373



0443



0463



0623



0643



0662



0663



0673



0693



0723



0733



0763



0773



0782



0793



0843



0933



0943



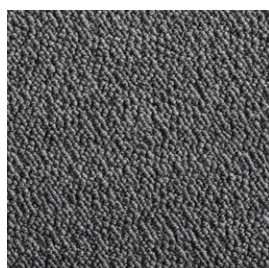
0963



0983

Recommended for contract use

*Find more tests and information at kvadrat.dk



FLAMIBER*

HAY

COMPOSITION
33% Acrylic, 30% Wool, 29% Cotton, 7% Polyester, 1% Viscose

DURABILITY
120.000 Martindale

LIGHTFASTNESS
5-6

PILLING
4-5

FIRE TESTS
US Cal. Bull. 117-2013

Charcoal C8



Charcoal C8



Cream A5



Dark blue J4



Grey C8



Petrol Blue J4



Mimosa E9



Sand J7



Olive E9



Ice blue J7



Mandarin E9



Light grey J7

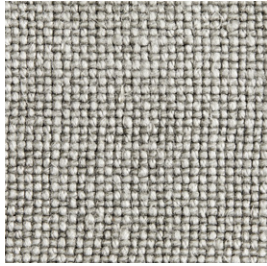


Carne J7

Recommended for contract use

*Not available in UK

FABRIC GROUP 2



LINEN GRID*

HAY

Cotton Linen 2

COMPOSITION
100% Linen

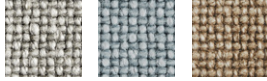
DURABILITY
25.000 Martindale

LIGHTFASTNESS
3-5

PILLING
3

FIRE TESTS
US Cal. Bul. 117-2013

Adriatic blue



Adriatic blue Blue Dark beige

*Not available in UK



LOLA*

HAY

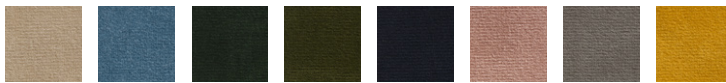
COMPOSITION
82% Cotton, 9%
Modal, 9% Polyester

DURABILITY
100.000 Martindale

LIGHTFASTNESS
5-6

FIRE TESTS
EN 1021-1

Rose



Beige Blue Dark green Moss Navy Rose Warm grey Yellow

Recommended for contract use

*Not available in UK



MAGLIA

HAY

Cotton Linen 2

COMPOSITION
42% Viscose,
36% Cotton,
16% Acrylic,
6% Polyester

DURABILITY
35.000 Martindale

LIGHTFASTNESS
5

PILLING
4-5

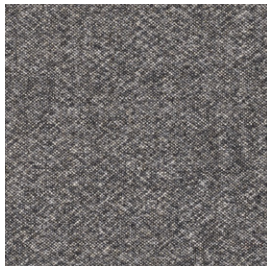
FIRE TESTS*
EN 1021-1/2
US Cal. Bul. 117-2013
BS 5852 Crib 5 with
treatment

Cream



Blue black Cream Dark green Olive Petrol blue Warm grey

FABRIC GROUP 2



MELANGE NAP

Kvadrat
Design by Akira Minagawa

COMPOSITION
97% new wool
(worsted),
3% nylon

DURABILITY
60.000 Martindale

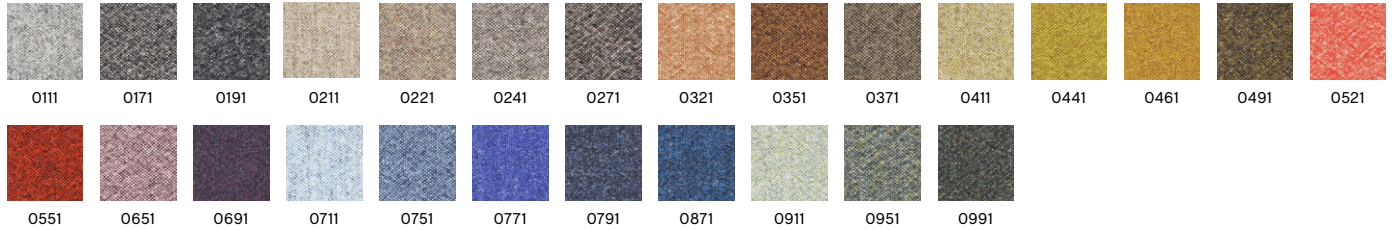
LIGHTFASTNESS
6

PILLING
3

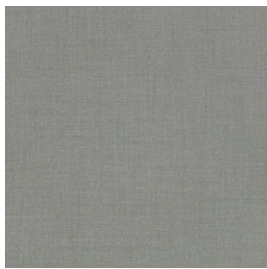
FIRE TESTS*
EN 1021-1/2
US Cal. Bull. 117-2013
BS 5852 Crib 5 with
treatment

SUSTAINABILITY
EU Ecolabel
Greenguard Gold
HPD
EPD

0171



Recommended for contract use
*Find more tests and information at kvadrat.dk



NICO

Maharam

COMPOSITION
63% Wool,
21% Polyester,
16% Nylon

DURABILITY
100.000 Martindale

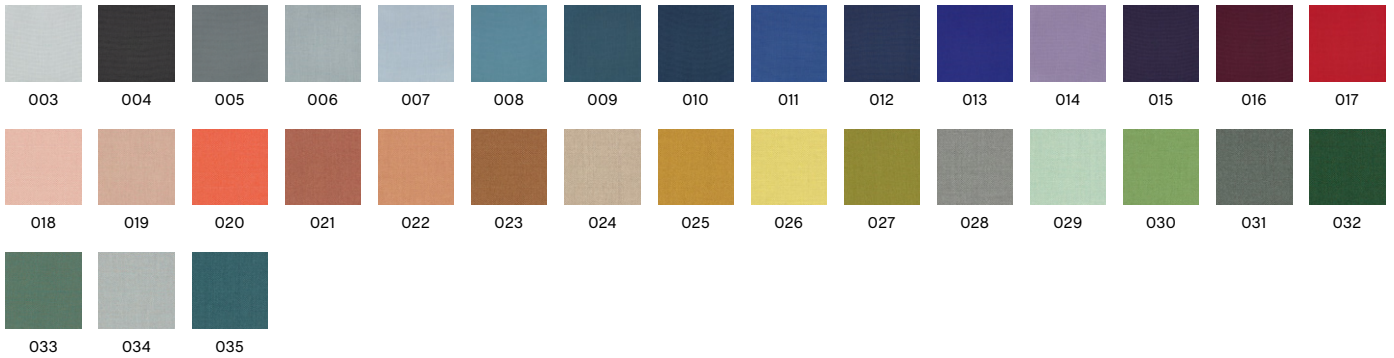
LIGHTFASTNESS
3-6

PILLING
3-4

FIRE TESTS
EN 1021-1/2
US Cal. Bull. 117-2013
BS 5852 Crib 5 with
treatment**

SUSTAINABILITY
Greenguard Gold
FR Free
PFAS Free

028



Recommended for contract use

FABRIC GROUP 2



OLAVI BY HAY

Romo & HAY

COMPOSITION
54% Polyester, 26%
Acrylic, 20% Cotton

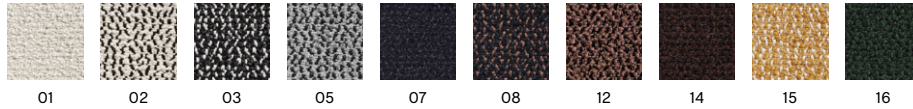
DURABILITY
70.000 Martindale

LIGHTFASTNESS
5-6

PILLING
3-4

FIRE TESTS
1021-1/2 with FR
treatment
US Cal. Bul. 117-2013

02



Recommended for contract use



OSUMI*

Romo

COMPOSITION
80% Cotton,
20% Polyester

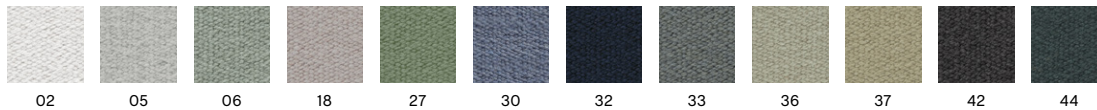
DURABILITY
75.000 Martindale

LIGHTFASTNESS
5

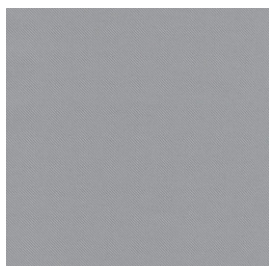
PILLING
4

FIRE TESTS
EN 1021-1/2
US Cal. Bul. 117-2013
BS 5852 Crib 5
With FR Treatment

05



Recommended for contract use
*Only available in selected colours



RELATE

Kvadrat
Design by Patricia Urquiola

COMPOSITION
100% Trevira CS

DURABILITY
80.000 Martindale

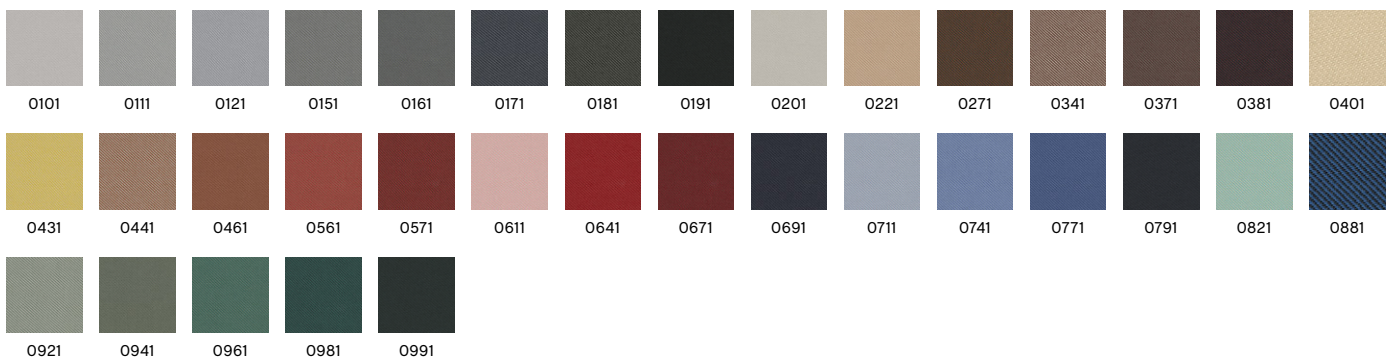
LIGHTFASTNESS
5-7

PILLING
4-5

FIRE TESTS*
EN 1021-1/2
US Cal. Bul. 117-2013
BS 5852 Crib 5

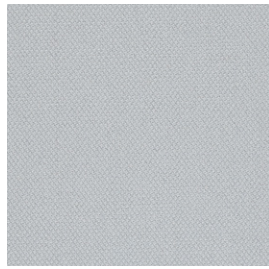
SUSTAINABILITY
EU Ecolabel
Greenguard Gold

0121



Recommended for contract use
*Find more tests and information at kvadrat.dk

FABRIC GROUP 2



STEELCUT 3

Kvadrat

Design by Frans Dijkmeijer & Giulio Ridolfo

COMPOSITION
90% new wool
(worsted),
10% nylon

DURABILITY
100.000 Martindale

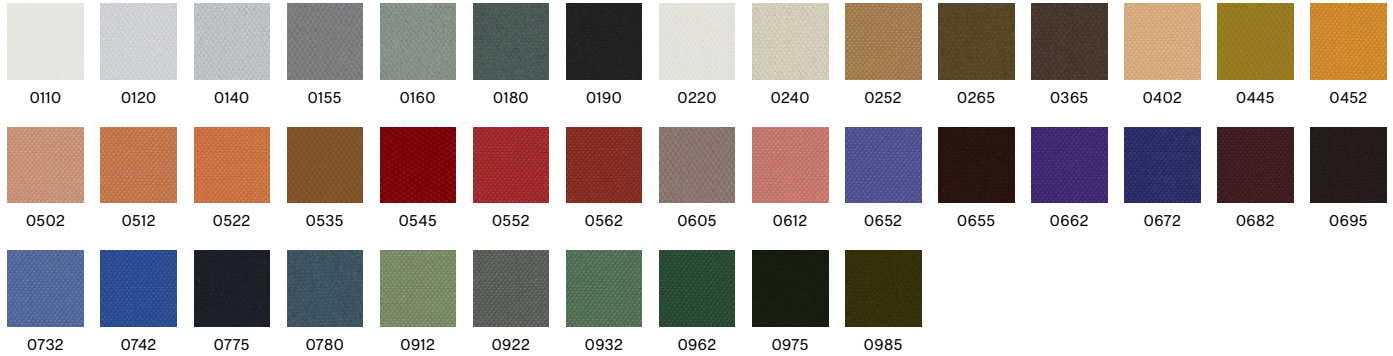
LIGHTFASTNESS
5-7

PILLING
3-4

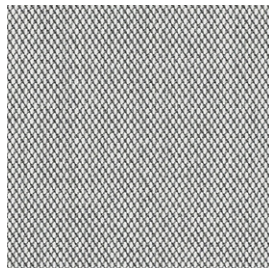
FIRE TESTS*
EN 1021-1/2
US Cal. Bull. 117-2013
BS 5852 Crib 5 with
treatment

SUSTAINABILITY
EU Ecolabel
Greenguard Gold
HPD
EPD

0140



Recommended for contract use
*Find more tests and information at kvadrat.dk



STEELCUT TRIO 3

Kvadrat

Design by Frans Dijkmeijer & Giulio Ridolfo

COMPOSITION
90% new wool
(worsted),
10% nylon

DURABILITY
100.000 Martindale

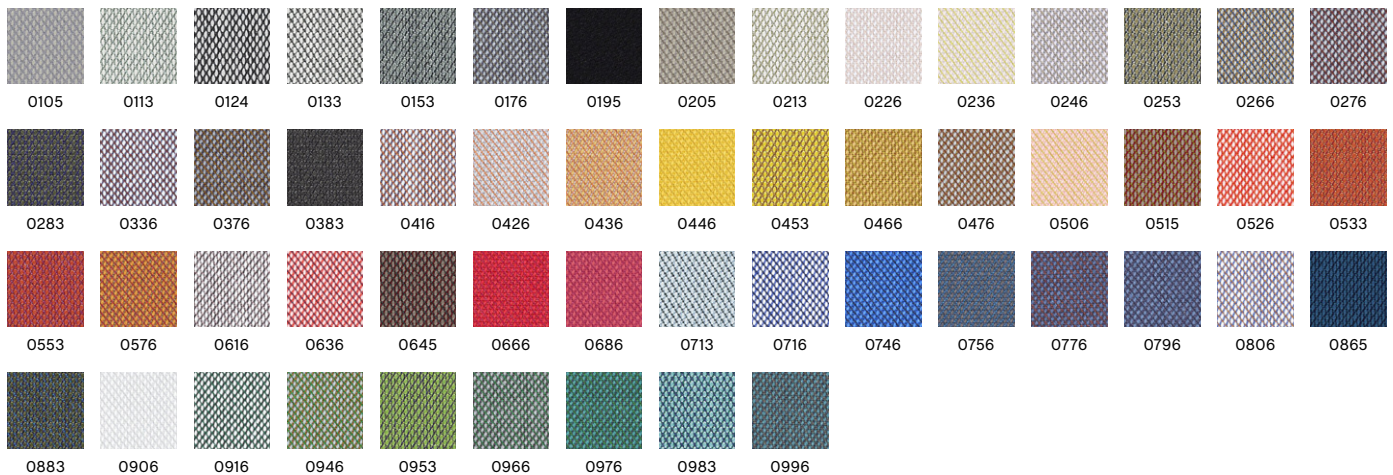
LIGHTFASTNESS
5-7

PILLING
4

FIRE TESTS*
EN 1021-1/2
US Cal. Bull. 117-2013
BS 5852 Crib 5 with
treatment

SUSTAINABILITY
EU Ecolabel
Greenguard Gold
HPD
EPD

0133



Recommended for contract use
*Find more tests and information at kvadrat.dk

FABRIC GROUP 2



TADAO

HAY
Textures

COMPOSITION

46% Wool, 20% Linen,
19% Polyester,
15% Cotton

DURABILITY

40.000 Martindale

LIGHTFASTNESS

4

PILLING

4

FIRE TESTS*

EN 1021-1/2
US Cal. Bull. 117-2013
BS 5852 Crib 5
with treatment

720



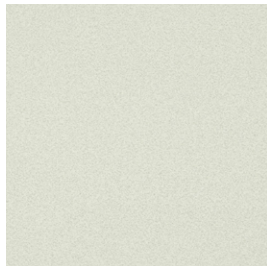
200

410

600

720

FABRIC GROUP 3



COMPOUND

Maharam

COMPOSITION
100% Polyurethane

DURABILITY
100.000 Martindale

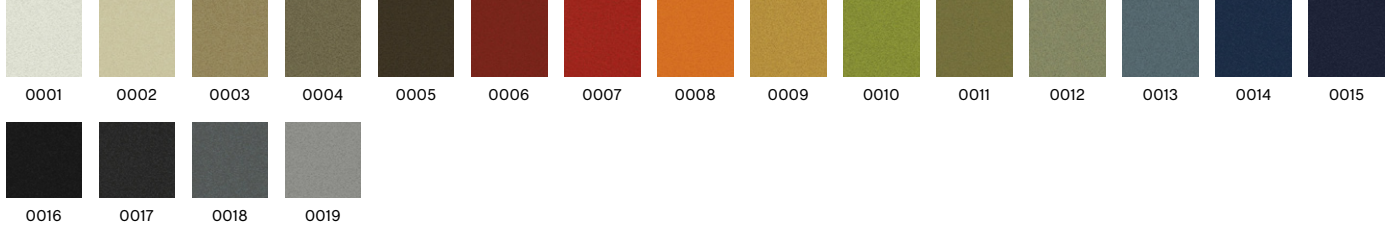
LIGHTFASTNESS
7

PILLING
5

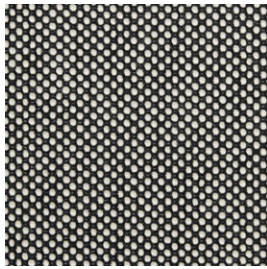
FIRE TESTS*
EN 1021-1/2 with FR treatment
US Cal. Bull. 117-2013
BS 5852 Crib 5 with treatment

SUSTAINABILITY
Greenguard Gold
Pfas-free

0001



Recommended for contract use
*Find more tests and information at maharam.com



DOT 1682

HAY
Textures

COMPOSITION
55% Wool,
45% Cotton

DURABILITY
50.000 Martindale

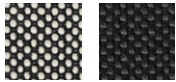
LIGHTFASTNESS
4-5

PILLING
3-4

FIRE TESTS
EN 1021-1/2
US Cal. Bull. 117-2013

SUSTAINABILITY
OEKO-TEX®
STANDARD 100

02 Bianco/Nero



02 Bianco/Nero 03 Anthracite

FABRIC GROUP 3

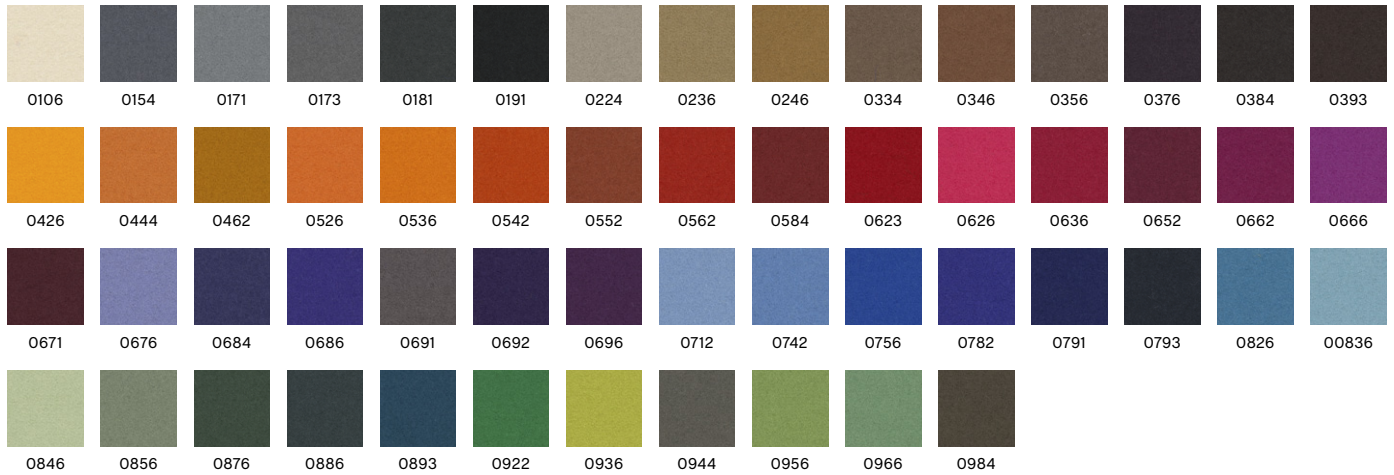


DIVINA 3

Kvadrat
Design by Finn Sködt

COMPOSITION 100% new wool	DURABILITY 45.000 Martindale	LIGHTFASTNESS 5-7	PILLING 3	FIRE TESTS* EN 1021-1/2 US Cal. Bull. 117-2013 BS 5852 Crib 5 with treatment	SUSTAINABILITY EU Ecolabel Greenguard Gold HPD EPD
-------------------------------------	--	-----------------------------	---------------------	---	---

0173



Recommended for contract use
*Find more tests and information at kvadrat.dk

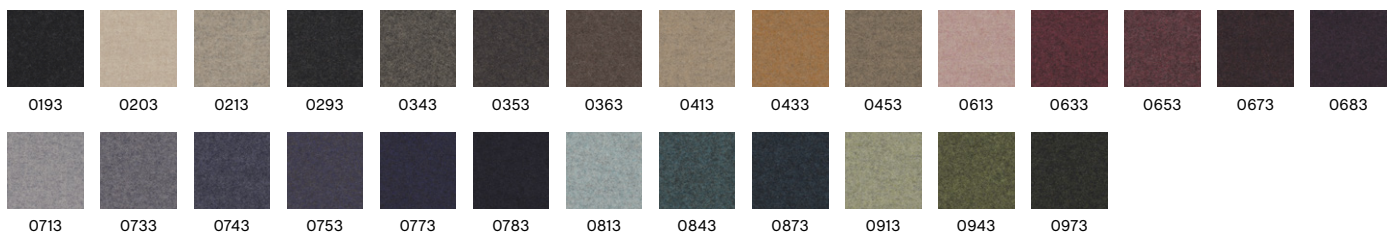


DIVINA MD

Kvadrat
Design by Finn Sködt

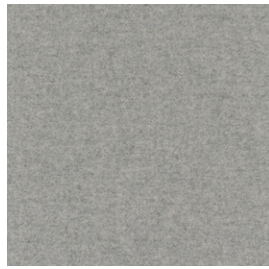
COMPOSITION 100% new wool	DURABILITY 45.000 Martindale	LIGHTFASTNESS 5-6	PILLING 3	FIRE TESTS* EN 1021-1/2 US Cal. Bull. 117-2013 BS 5852 Crib 5 with treatment	SUSTAINABILITY EU Ecolabel Greenguard Gold HPD EPD
-------------------------------------	--	-----------------------------	---------------------	---	---

0713



Recommended for contract use
*Find more tests and information at kvadrat.dk

FABRIC GROUP 3



DIVINA MELANGE 3

Kvadrat

Design by Finn Sködt

COMPOSITION
100% new wool

DURABILITY
45.000 Martindale

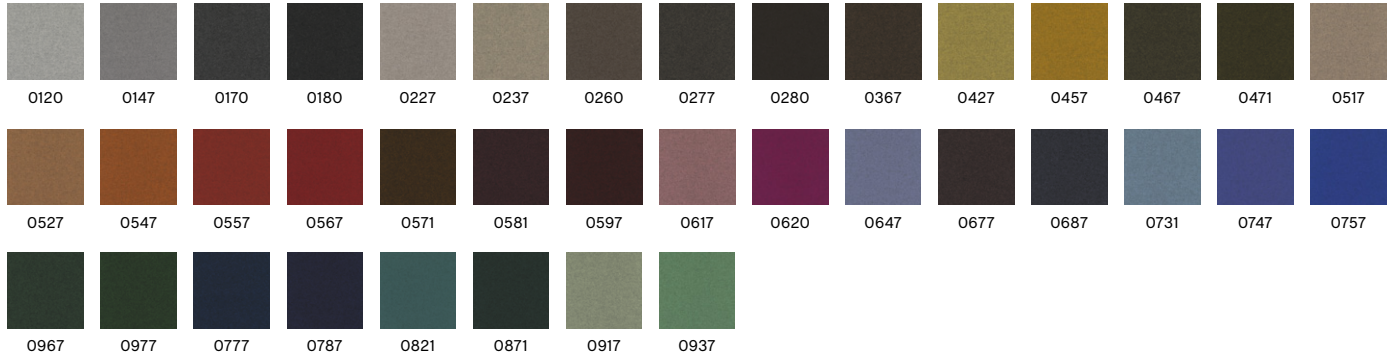
LIGHTFASTNESS
5-7

PILLING
3

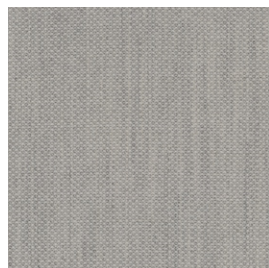
FIRE TESTS*
EN 1021-1/2
US Cal. Bull. 117-2013
BS 5852 Crib 5
with treatment

SUSTAINABILITY
EU Ecolabel
Greenguard Gold
HPD
EPD

0120



Recommended for contract use
*Find more tests and information at kvadrat.dk



FIORD 2

Kvadrat

Design by Louise Sigvardt

COMPOSITION
92% New wool
(worsted), 8% Nylon

DURABILITY
60.000 Martindale

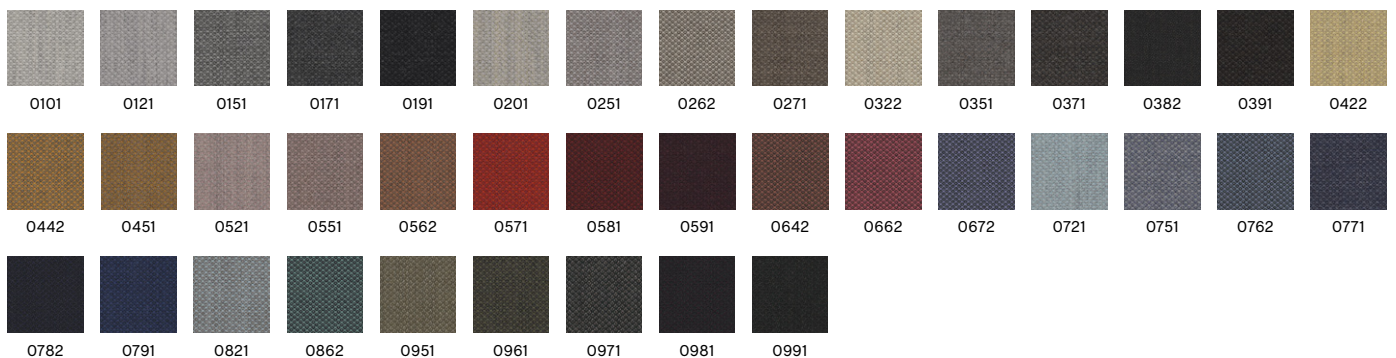
LIGHTFASTNESS
5-7

PILLING
4-5

FIRE TESTS*
EN 1021-1/2
US Cal. Bull. 117-2013
BS 5852 Crib 5 with
treatment

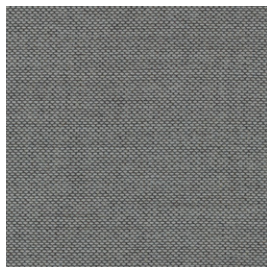
SUSTAINABILITY
EU Ecolabel
Greenguard Gold
HPD
EPD

0101



Recommended for contract use
*Find more tests and information at kvadrat.dk

FABRIC GROUP 3



RE-WOOL

Kvadrat
Design by Margrethe Odgaard

COMPOSITION
45% Recycled wool,
45% New wool
(worsted), 10% Nylon

DURABILITY
100.000 Martindale

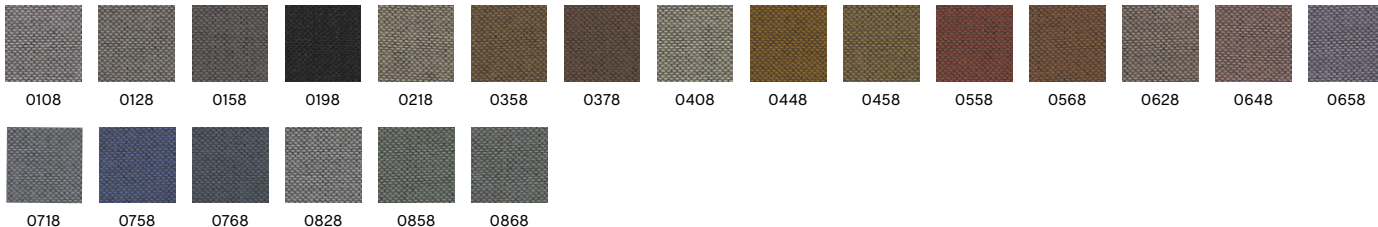
LIGHTFASTNESS
5-7

PILLING
4

FIRE TESTS*
EN 1021-1/2
US Cal. Bull. 117-2013
BS 5852 Crib 5 with
treatment

SUSTAINABILITY
EU Ecolabel
Greenguard Gold
HPD

0828



Recommended for contract use

*Find more tests and information at kvadrat.dk



RODEN*

Romo

COMPOSITION
55% Viscose, 24%
Linen, 10% Cotton,
8% Polyester, 3%
Polyamide

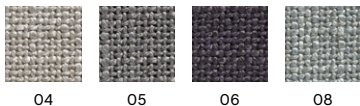
DURABILITY
50.000 Martindale

LIGHTFASTNESS
5-6

PILLING
2-3

FIRE TESTS
EN 1021-1/2
US Cal. Bull. 117-2013
BS 5852 Crib 5 with
treatment

04



*Only available in selected colours



RUSKIN*

Romo

COMPOSITION
70% Viscose, 15%
Linen, 10% Wool, 5%
Polyamide

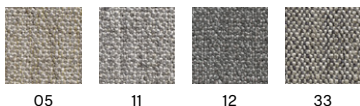
DURABILITY
60.000 Martindale

LIGHTFASTNESS
5

PILLING
3

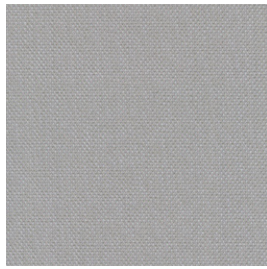
FIRE TESTS
EN 1021-1/2
BS 5852 Crib 5 with
treatment

11



*Only available in selected colours

FABRIC GROUP 3



STEELCUT QUARTET

Kvadrat
Design by Frans Dijkmeijer & Giulio Ridolfo

COMPOSITION
90% New wool,
10% Nylon

DURABILITY
100.000 Martindale

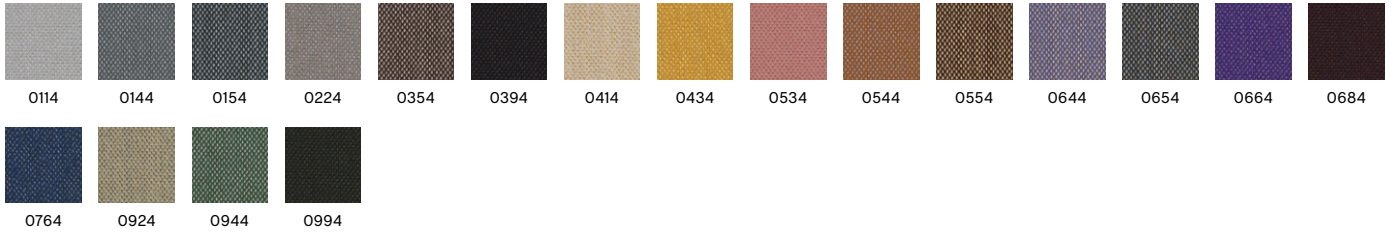
LIGHTFASTNESS
6

PILLING
4-5

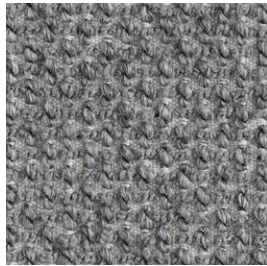
FIRE TESTS*
EN 1021-1/2
US Cal.Bull.117-2013
BS 5852 Crib 5 with
treatment

SUSTAINABILITY
EU Ecolabel
Greenguard Gold

0114



Recommended for contract use
*Find more tests and information at kvadrat.dk



TARTAGLIA

HAY
Textures

COMPOSITION
35% Cotton, 25%
Acrylic,
35% Polyester,
5% Wool

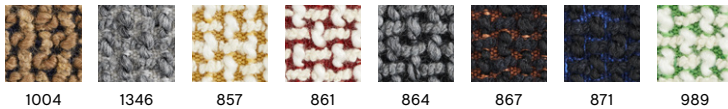
DURABILITY
70.000 Martindale

LIGHTFASTNESS
5

PILLING
4-5

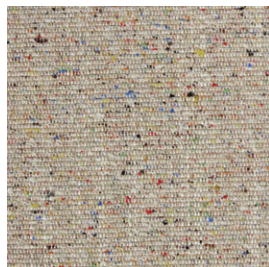
FIRE TESTS*
EN 1021-1/2 with FR
treatment
US Cal. Bull. 117-2013

1346



Recommended for contract use

FABRIC GROUP 4



LGG60

BOLGHERI

HAY
Textures

COMPOSITION
35% Viscose, 26%
Wool, 17% Polyamide,
15% Silk, 7% Linen

DURABILITY
30.000 Martindale

LIGHTFASTNESS
5

PILLING
3-4

FIRE TESTS
EN 1021-1/2
US Cal. Bull. 117-2013

SUSTAINABILITY
OEKO-TEX®
STANDARD 100

Recommended for contract use



0124

CANVAS 2

Kvadrat
Design by Giulio Ridolfo

COMPOSITION
90% New wool
(worsted), 10% Nylon

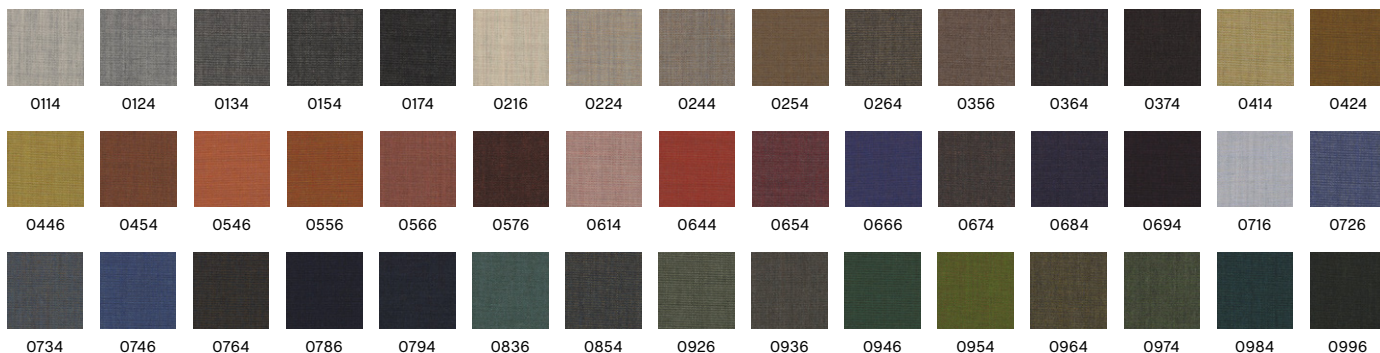
DURABILITY
100.000 Martindale

LIGHTFASTNESS
5-6

PILLING
4

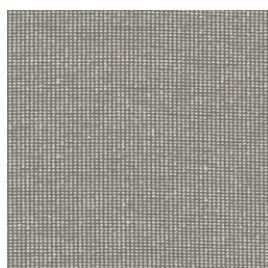
FIRE TESTS*
EN 1021-1/2
US Cal. Bull. 117-2013
BS 5852 Crib 5 with
treatment

SUSTAINABILITY
EU Ecolabel
Greenguard Gold
HPD
EPD



Recommended for contract use

*Find more tests and information at kvadrat.dk



0222

ENCIRCLE

Kvadrat
Design by Karin an Rijlaarsdam

COMPOSITION
100% Trevira CS

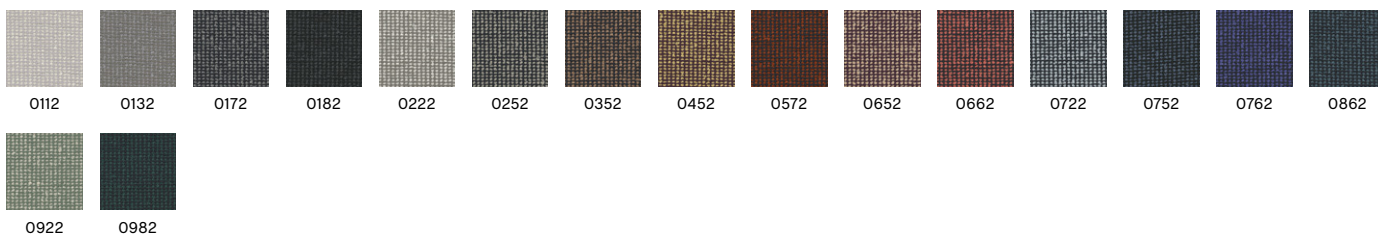
DURABILITY
80.000 Martindale

LIGHTFASTNESS
5-7

PILLING
4

FIRE TESTS*
EN 1021-1/2
US Cal. Bull. 117-2013
BS 5852 Crib 5

SUSTAINABILITY
Greenguard Gold



Recommended for contract use

*Find more tests and information at kvadrat.dk

FABRIC GROUP 4



HALLINGDAL 65

Kvadrat
Design by Nanna Ditzel

COMPOSITION
70% New wool,
30% Viscose

DURABILITY
100.000 Martindale

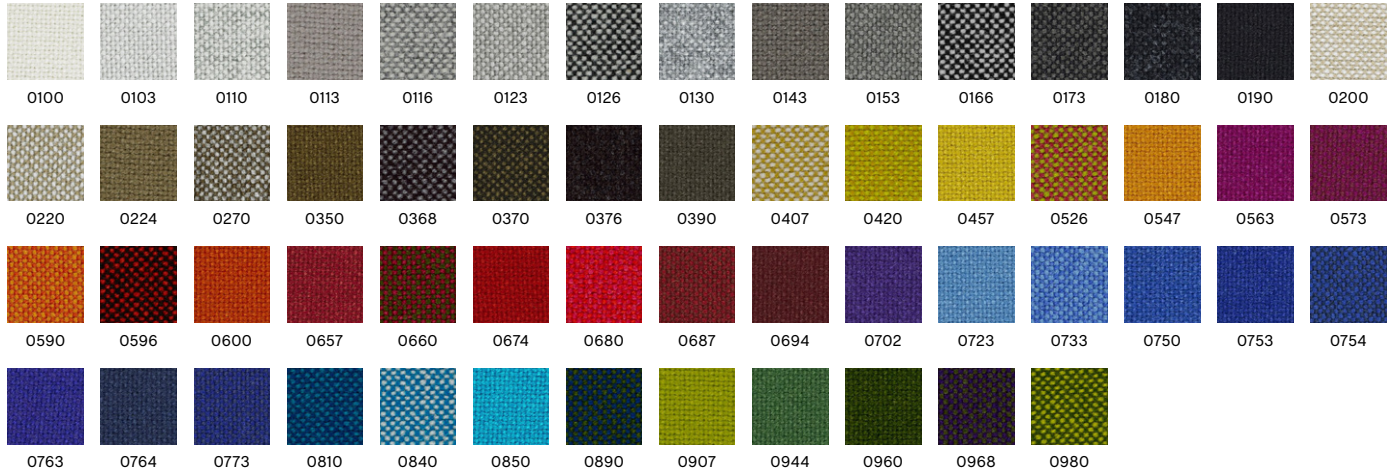
LIGHTFASTNESS
5-7

PILLING
3-4

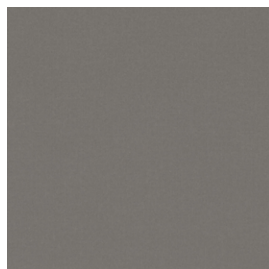
FIRE TESTS*
EN 1021-1/2
US Cal. Bull. 117-2013
BS 5852 Crib 5

SUSTAINABILITY
EU Ecolabel
Greenguard Gold
HPD
EPD

0100



Recommended for contract use
*Find more tests and information at kvadrat.dk



ICE FR*

Romo

COMPOSITION
82% Cotton,
18% Polyester

DURABILITY
100.000 Martindale

LIGHTFASTNESS
5

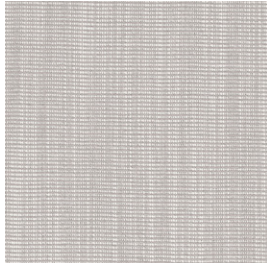
FIRE TESTS
EN 1021-1/2

15 Meteor



*Only available in UK
*Only available in selected colours

FABRIC GROUP 4



RAAS

Kvadrat

Design by by Doshi Levien

COMPOSITION

92% New wool
(worsted), 8% Nylon

DURABILITY

100.000 Martindale

LIGHTFASTNESS

6-7

PILLING

4-5

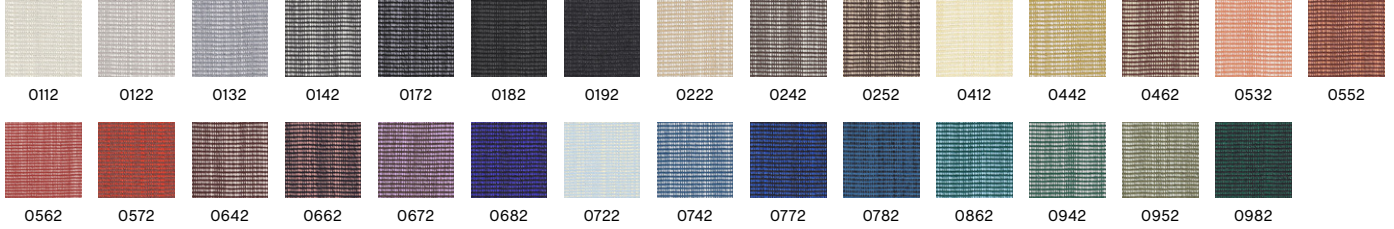
FIRE TESTS*

EN 1021-1/2
US Cal. Bull. 117-2013
BS 5852 Crib 5 with
treatment

SUSTAINABILITY

EU Ecolabel
Greenguard Gold
HPD
EPD

0122



Recommended for contract use

*Find more tests and information at kvadrat.dk

FABRIC GROUP 5



BALDER 3

Kvadrat/Raf Simons
Design by Fanny Aronssen

COMPOSITION
68% New wool, 26%
Cotton, 6% Nylon

DURABILITY
100.000 Martindale

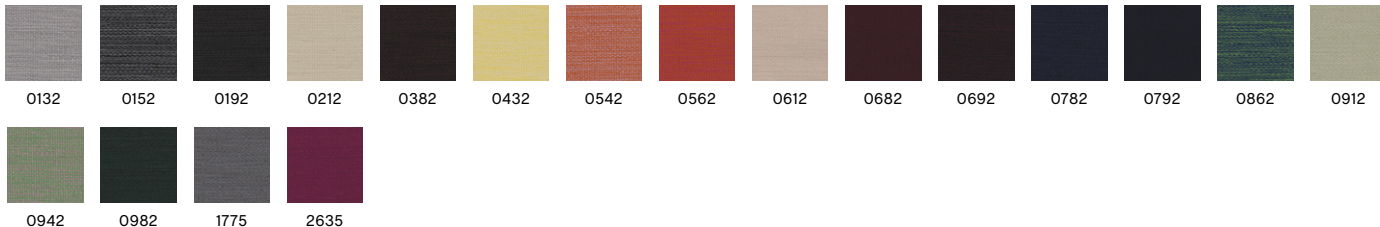
LIGHTFASTNESS
5-7

PILLING
4

FIRE TESTS*
EN 1021-1/2
US Cal. Bull. 117-2013
BS 5852 Crib 5 with
treatment

SUSTAINABILITY
Greenguard Gold
HPD
EPD

0132



Recommended for contract use
*Find more tests and information at kvadrat.dk



HAKU*

Kvadrat
Design by Teruhiro Yanagihara

COMPOSITION
100% polyurethane/
silicone (surface)

DURABILITY
100.000 Martindale

LIGHTFASTNESS
6-7

PILLING
5

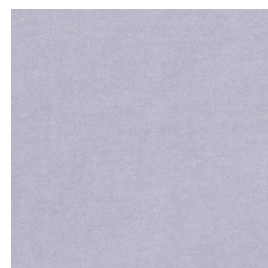
FIRE TESTS
EN 1021-1
US Cal.Bull.117-2013

SUSTAINABILITY
Greenguard Gold

0121



Recommended for contract use
*Find more tests and information at kvadrat.dk
*Not available in UK



HARALD 3*

Kvadrat/Raf Simons
Design by Fanny Aronssen

COMPOSITION
100% Cotton

DURABILITY
100.000 Martindale

LIGHTFASTNESS
5-6

PILLING
4-5

FIRE TESTS
EN 1021-1

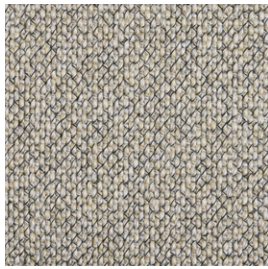
SUSTAINABILITY
Greenguard Gold
HPD
EPD

0133



Recommended for contract use
*Not available in UK

FABRIC GROUP 5



LOFT

HAY

Cotton Linen 2

COMPOSITION
80% Viscose,
11% Polyester,
9% Cotton

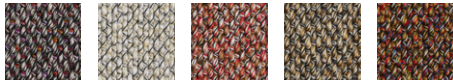
DURABILITY
>100.000 Martindale

LIGHTFASTNESS
5

PILLING
4-5

FIRE TESTS*
EN 1021-1/2
US Cal. Bull. 117-2013

200



103

200

304

401

500

Recommended for contract use



SIERRA LEATHER

Camo

COMPOSITION
Corrected leather

COLOUR FASTNESS TO RUBBING DRY
5

COLOUR FASTNESS TO RUBBING WET
4

LIGHTFASTNESS
7

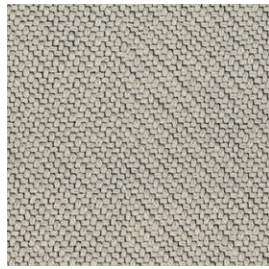
FIRE TESTS
EN 1021-1/2
US Cal. Bull. 117-2013
BS 5852 Crib 5 with treatment

SIK1003 Cognac



Recommended for contract use

FABRIC GROUP 6



CODA 2

Kvadrat
Design by Norway Says & Per Bjørnsen

COMPOSITION
90% New wool,
10% Nylon

DURABILITY
100.000 Martindale

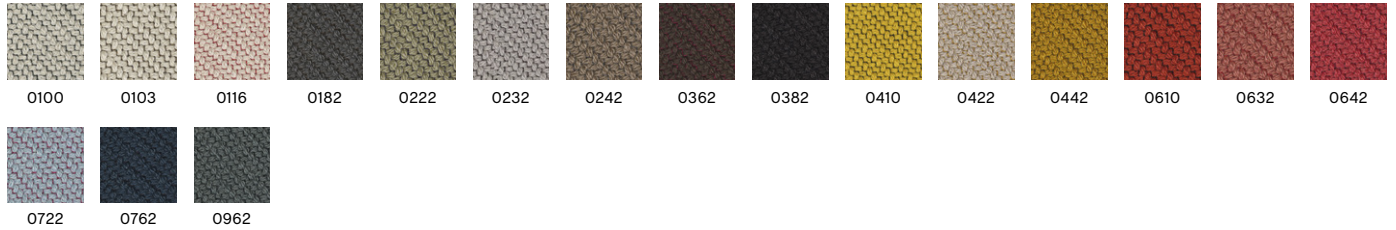
LIGHTFASTNESS
5-7

PILLING
4

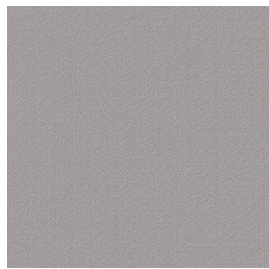
FIRE TESTS*
EN 1021-1/2
US Cal. Bull. 117-2013
BS 5852 Crib 5 with
treatment

SUSTAINABILITY
Greenguard Gold
HPD
EPD

0100



Recommended for contract use
*Find more tests and information at kvadrat.dk



VIDAR 4

Kvadrat/Raf Simons
Design by Fanny Aronsen

COMPOSITION
94% New wool,
6% Nylon

DURABILITY
100.000 Martindale

LIGHTFASTNESS
5-7

PILLING
4-5

FIRE TESTS*
EN 1021-1/2
US Cal. Bull. 117-2013
BS 5852 Crib 5 with
treatment

SUSTAINABILITY
EU Ecolabel
Greenguard Gold
HPD
EPD

0123



Recommended for contract use
*Find more tests and information at kvadrat.dk

FABRIC GROUP 6



CALIFORNIA LEATHER

Camo

COMPOSITION Semi aniline leather	COLOUR FASTNESS TO RUBBING DRY 4	COLOUR FASTNESS TO RUBBING WET 3	LIGHTFASTNESS 4	FIRE TESTS EN 1021-1/2 US Cal. Bull. 117-2013 BS 5852 Crib 5 with treatment
-------------------------------------	---	---	--------------------	---

CA5003 Cognac



Recommended for contract use



NEVADA LEATHER*

Camo

Selected Leather & Canvas 2

COMPOSITION Aniline leather	COLOUR FASTNESS TO RUBBING DRY 3	COLOUR FASTNESS TO RUBBING WET 3	LIGHTFASTNESS 4	FIRE TESTS EN 1021-1/2 US Cal. Bull. 117-2013 BS 5852 Crib 5	SUSTAINABILITY Free of chrome
--------------------------------	---	---	--------------------	---	----------------------------------

NV2488S Cognac



Recommended for contract use
*Only available in selected colours



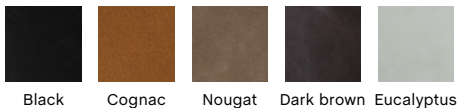
SENSE LEATHER

HAY

Selected Leather & Canvas 2

COMPOSITION Aniline leather	COLOUR FASTNESS TO RUBBING DRY 3	COLOUR FASTNESS TO RUBBING WET 3	LIGHTFASTNESS 3	FIRE TESTS EN 1021-1/2 US Cal. Bull. 117-2013 BS 5852 Crib 5 with treatment
--------------------------------	---	---	--------------------	---

Cognac



Recommended for contract use

UPHOLSTERY MATRIX

STOOLS & BAR STOOLS



		AAS 32 FRONT UPH.	AAS 33	AAS 38 FRONT UPH.	AAS 39	SOFT EDGE 90 BAR STOOL SEAT UPH.	SOFT EDGE 91 BAR STOOL FULL UPH.	SOFT EDGE 95 BAR STOOL SEAT UPH.	NEU 12 BAR STOOL FULL UPH.
FABRIC GROUP 1	ATLAS		●	●	●	●	●	●	●
	LINARA		●	●	●	●	●	●	●
	LINT (NOT AVAILABLE IN UK)		●	●	●	●	●	●	●
	METAPHOR		●	●	●	●	●	●	●
	MODE		●	●	●	●	●	●	●
	PLANAR (NOT AVAILABLE IN UK)		●	●	●	●	●	●	●
	RANDOM FADE		●	●	●	●	●	●	●
	REMIX		●	●	●	●	●	●	●
	SURFACE BY HAY		●	●	●	●	●	●	●
	SWARM		●	●	●	●	●	●	●
	VALENCIA		●	●	●	●	●	●	●
	FABRIC GROUP 2	FAIRWAY		●	●	●	●	●	●
FIELD									
FLAMIBER (NOT AVAILABLE IN UK)			●	●	●	●	●	●	●
LINEN GRID (NOT AVAILABLE IN UK)			●	●	●	●	●	●	●
LOLA (NOT AVAILABLE IN UK)			●	●	●	●	●	●	●
MAGLIA			●	●	●	●	●	●	●
MELANGE NAP			●	●	●	●	●	●	●
NICO			●	●	●	●	●	●	●
OLAVI BY HAY			●	●	●	●	●	●	●
OSUMI			●	●	●	●	●	●	●
RELATE									
STEELCUT			●	●	●	●	●	●	●
STEELCUT TRIO		●	●	●	●	●	●	●	
TADAO		●	●	●	●	●	●	●	
FABRIC GROUP 3	COMPOUND		●	●	●	●	●	●	●
	DOT 1682		●	●	●	●	●	●	●
	DIVINA		●	●	●	●	●	●	●
	DIVINA MD		●	●	●	●	●	●	●
	DIVINA MELANGE		●	●	●	●	●	●	●
	FIORD		●	●	●	●	●	●	●
	RE-WOOL		●	●	●	●	●	●	●
	RODEN		●	●	●	●	●	●	●
	RUSKIN		●	●	●	●	●	●	●
	STEELCUT QUARTET		●	●	●	●	●	●	●
	TARTAGLIA		●	●	●	●	●	●	●
FABRIC GROUP 4	BOLGHERI		●	●	●	●	●	●	●
	CANVAS		●	●	●	●	●	●	●
	ENCIRCLE		●	●	●	●	●	●	●
	HALLINGDAL		●	●	●	●	●	●	●
	ICE (ONLY AVAILABLE IN UK)		●	●	●	●	●	●	●
	RAAS		●	●	●	●	●	●	●
FABRIC GROUP 5	BALDER		●	●	●	●	●	●	●
	HAKU		●	●	●	●	●	●	●
	HARALD (NOT AVAILABLE IN UK)		●	●	●	●	●	●	●
	LOFT		●	●	●	●	●	●	●
	SIERRA LEATHER		●	●	●	●	●	●	●
FABRIC GROUP 6	CODA		●	●	●	●	●	●	●
	VIDAR		●	●	●	●	●	●	●
	CALIFORNIA LEATHER		●	●	●	●	●	●	●
	NEVADA LEATHER		●	●	●	●	●	●	●
	SENSE LEATHER		●	●	●	●	●	●	●

UPHOLSTERY MATRIX










LOUNGE

		SOFT EDGE 100 LOUNGE SEAT UPH.	SOFT EDGE 101 LOUNGE FULL UPH.	DAPPER	DORSO	UCHIWA FRONT	UCHIWA BACK	UCHIWA QUILT FRONT	UCHIWA QUILT BACK	UCHIWA OTTOMAN FRONT	UCHIWA OTTOMAN BACK	CAN*	ARBOUR CLUB ARMCHAIR	CHISEL LOUNGE CHAIR
FABRIC GROUP 1	ATLAS		●	●	●	●							●	
	LINARA		●	●	●	●		●		●		●	●	●
	LINT (NOT AVAILABLE IN UK)		●	●	●	●							●	●
	METAPHOR		●	●	●	●							●	●
	MODE		●	●	●	●	●			●			●	●
	PLANAR (NOT AVAILABLE IN UK)		●	●	●	●							●	●
	RANDOM FADE		●	●	●	●							●	●
	REMIX		●	●	●	●		●			●		●	●
	SURFACE BY HAY		●	●	●	●	●		●		●	●	●	
	SWARM		●	●	●	●							●	●
	VALENCIA				●	●							●	●
	FABRIC GROUP 2	FAIRWAY		●	●	●								●
FIELD													●	●
FLAMIBER (NOT AVAILABLE IN UK)			●	●	●	●		●		●			●	●
LINEN GRID (NOT AVAILABLE IN UK)			●	●	●	●							●	●
LOLA (NOT AVAILABLE IN UK)			●	●	●		●		●		●		●	
MAGLIA			●	●	●	●							●	●
MELANGE NAP					●	●							●	
NICO			●	●	●	●							●	●
OLAVI BY HAY			●	●	●	●	●		●		●	●	●	●
OSUMI			●	●	●	●							●	●
RELATE													●	●
STEELCUT			●	●	●	●		●		●	●	●	●	●
STEELCUT TRIO			●	●	●	●	●		●		●		●	●
TADAO			●	●	●	●							●	●
FABRIC GROUP 3	COMPOUND		●	●	●	●							●	
	DOT 1682		●	●	●	●							●	●
	DIVINA		●	●	●	●							●	●
	DIVINA MD		●	●	●	●							●	●
	DIVINA MELANGE		●	●	●	●							●	●
	FIORD		●	●	●	●							●	●
	RE-WOOL		●	●	●	●							●	●
	RODEN		●	●	●	●	●		●		●	●	●	●
	RUSKIN		●	●	●	●						●	●	●
	STEELCUT QUARTET		●	●	●	●							●	●
	TARTAGLIA		●	●	●	●							●	●
FABRIC GROUP 4	BOLGHERI		●	●	●	●		●		●			●	●
	CANVAS		●	●	●	●	●	●	●	●	●		●	●
	ENCIRCLE		●	●	●	●							●	●
	HALLINGDAL		●	●	●	●	●		●				●	●
	ICE (ONLY AVAILABLE IN UK)		●	●	●	●							●	●
	RAAS		●	●	●	●	●		●		●		●	●
FABRIC GROUP 5	BALDER		●	●	●	●							●	●
	HAKU				●								●	
	HARALD (NOT AVAILABLE IN UK)		●	●	●								●	
	LOFT		●	●	●	●							●	●
	SIERRA LEATHER		●	●	●	●	●		●		●		●	●
FABRIC GROUP 6	CODA		●	●	●	●							●	●
	VIDAR		●	●	●	●							●	●
	CALIFORNIA LEATHER		●	●	●	●							●	
	NEVADA LEATHER		●	●	●	●							●	
	SENSE LEATHER		●	●	●	●	●		●		●	●	●	●
	CHISEL LOUNGE CHAIR SHEEPSKIN													●

*Selected colours - please see fact sheet for further specifications.

UPHOLSTERY MATRIX

SOFAS

		AAL SOFA	ARBOUR & ARBOUR CLUB	CAN*	HACKNEY	MAGS**	MAGS SOFT	MAGS OTTOMAN	MAGS SOFT OTTOMAN
									
FABRIC GROUP 1	ATLAS		●	●	●	●	●	●	●
	LINARA		●	●	●	●	●	●	●
	LINT (NOT AVAILABLE IN UK)		●	●	●	●	●	●	●
	METAPHOR		●	●	●	●	●	●	●
	MODE		●	●	●	●	●	●	●
	PLANAR (NOT AVAILABLE IN UK)		●	●	●	●	●	●	●
	RANDOM FADE		●	●	●	●	●	●	●
	REMIX		●	●	●	●	●	●	●
	SURFACE BY HAY		●	●	●	●	●	●	●
	SWARM		●	●	●	●	●	●	●
	VALENCIA		●	●	●	●	●	●	●
	FABRIC GROUP 2	FAIRWAY		●	●	●	●	●	●
FIELD			●	●	●	●	●	●	●
FLAMIBER (NOT AVAILABLE IN UK)			●	●	●	●	●	●	●
LINEN GRID (NOT AVAILABLE IN UK)			●	●	●	●	●	●	●
LOLA (NOT AVAILABLE IN UK)			●	●	●	●	●	●	●
MAGLIA			●	●	●	●	●	●	●
MELANGE NAP			●	●	●	●	●	●	●
NICO			●	●	●	●	●	●	●
OLAVI BY HAY			●	●	●	●	●	●	●
OSUMI			●	●	●	●	●	●	●
RELATE			●	●	●	●	●	●	●
STEELCUT			●	●	●	●	●	●	●
STEELCUT TRIO			●	●	●	●	●	●	●
TADAO			●	●	●	●	●	●	●
FABRIC GROUP 3	COMPOUND		●	●	●	●	●	●	●
	DOT 1682		●	●	●	●	●	●	●
	DIVINA		●	●	●	●	●	●	●
	DIVINA MD		●	●	●	●	●	●	●
	DIVINA MELANGE		●	●	●	●	●	●	●
	FIORD		●	●	●	●	●	●	●
	RE-WOOL		●	●	●	●	●	●	●
	RODEN		●	●	●	●	●	●	●
	RUSKIN		●	●	●	●	●	●	●
	STEELCUT QUARTET		●	●	●	●	●	●	●
	TARTAGLIA		●	●	●	●	●	●	●
FABRIC GROUP 4	BOLGHERI		●	●	●	●	●	●	●
	CANVAS		●	●	●	●	●	●	●
	ENCIRCLE		●	●	●	●	●	●	●
	HALLINGDAL		●	●	●	●	●	●	●
	ICE (ONLY AVAILABLE IN UK)		●	●	●	●	●	●	●
	RAAS		●	●	●	●	●	●	●
FABRIC GROUP 5	BALDER		●	●	●	●	●	●	●
	HAKU		●	●	●	●	●	●	●
	HARALD (NOT AVAILABLE IN UK)		●	●	●	●	●	●	●
	LOFT		●	●	●	●	●	●	●
	SIERRA LEATHER		●	●	●	●**	●	●	●
FABRIC GROUP 6	CODA		●	●	●	●	●	●	●
	VIDAR		●	●	●	●	●	●	●
	CALIFORNIA LEATHER		●	●	●	●**	●	●	●
	NEVADA LEATHER		●	●	●	●**	●	●	●
	SENSE LEATHER		●	●	●	●**	●	●	●

*Selected colours - please see fact sheet for further specifications.

**Chaise longue- and lounge modules are not available in leather

UPHOLSTERY MATRIX

SOFAS



		QUILTON	PANDARINE	SILHOUETTE	SILHOUETTE HIGH
FABRIC GROUP 1	ATLAS	●	●	●	●
	LINARA	●	●	●	●
	LINT (NOT AVAILABLE IN UK)	●	●	●	●
	METAPHOR	●	●	●	●
	MODE	●	●	●	●
	PLANAR (NOT AVAILABLE IN UK)	●	●	●	●
	RANDOM FADE	●	●	●	●
	REMIX	●	●	●	●
	SURFACE BY HAY	●	●	●	●
	SWARM	●	●	●	●
	VALENCIA				
	FABRIC GROUP 2	FAIRWAY	●	●	●
FIELD		●	●	●	●
FLAMIBER (NOT AVAILABLE IN UK)		●	●	●	●
LINEN GRID (NOT AVAILABLE IN UK)			●	●	●
LOLA (NOT AVAILABLE IN UK)			●	●	●
MAGLIA		●	●	●	●
MELANGE NAP		●	●	●	●
NICO		●	●	●	●
OLAVI BY HAY		●	●	●	●
OSUMI		●	●	●	●
RELATE		●	●	●	●
STEELCUT		●	●	●	●
STEELCUT TRIO		●	●	●	●
TADAO		●	●	●	●
FABRIC GROUP 3	COMPOUND	●	●		
	DOT 1682	●	●	●	●
	DIVINA	●	●	●	●
	DIVINA MD	●	●	●	●
	DIVINA MELANGE	●	●	●	●
	FIORD	●	●	●	●
	RE-WOOL	●	●	●	●
	RODEN	●	●	●	●
	RUSKIN	●	●	●	●
	STEELCUT QUARTET	●	●	●	●
	TARTAGLIA	●	●	●	●
FABRIC GROUP 4	BOLGHERI	●	●	●	●
	CANVAS	●	●	●	●
	ENCIRCLE	●	●	●	●
	HALLINGDAL	●	●	●	●
	ICE (ONLY AVAILABLE IN UK)		●	●	●
	RAAS	●	●	●	●
FABRIC GROUP 5	BALDER	●	●	●	●
	HAKU		●	●	●
	HARALD (NOT AVAILABLE IN UK)		●		
	LOFT	●	●	●	●
	SIERRA LEATHER	●	●	●	
FABRIC GROUP 6	CODA	●	●	●	●
	VIDAR	●	●	●	●
	CALIFORNIA LEATHER	●			
	NEVADA LEATHER	●	●	●	
	SENSE LEATHER	●	●	●	