

FINISHES



POLYPROPYLENE



PP1016
Lemon yellow



PP102C
Mimosa yellow



PP34
Peach



PP1012
Mustard



PP27
Curry



PP33
Carrot orange



PP3020
Red



PP7608U
Marsala



PP22
Tobacco



PP30
Verde kaki



PP513
Military green



PP29
Olive green



PP6018
Tropical green



PP512
Avocado green



PP557C
Light teal



PP503
Powder blue



PP2905C
Light blue



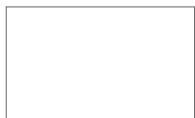
PP480C
Cipria



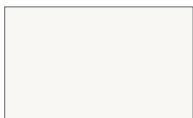
PP514
Sand



PP9001
Off-white



PP9010
Pure white



PP20
White



PP21
Pearl grey



PP24
Light grey



PP421C
Almond



PP23
Medium grey



PP7001
Titanium grey



PP07
Cement grey



PP11
Anthracite



PP32
Slate grey



PP31
Coal black



PP01*
Black

* Polypropylene has some "shadings" that are more evident in the black color than the others. They are however to be considered in the norm, because they are an intrinsic characteristic of the material.

POLYURETHANE



PU17
Yellow



PU01
Red



PU14
Ruby red



PU19
Purple red



PU10
Coffee



PU13
Sand



PU20
Pale green



PU12
Ivory



PU02
White



PU04
Silver



PU15
Traffic grey



PU11
Anthracite



PU03
Black

POLYAMIDE



PA120
Yellow



PA114
Red



PA119
Green



PA121
Capri blue



PA101
White



PA117
Silica grey



PA102
Black

TRANSPARENT POLYCARBONATE



PC123
Burgundy



PC103
Ice



PC104
Smoke-grey

SOLID COLOUR POLYCARBONATE



PC124
Dalia yellow



PC118
Orange



PC114
Red



PC130
Green leaf



PC128
Tobacco



PC125
Sand



PC101
White



PC117
Silica grey



PC126
Anthracite



PC102
Black

ALUMINIUM



AC45
Oxide red fine textured



AL02
Verniciato goffrato bordeaux



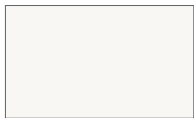
AL43
Acquamarina fine textured



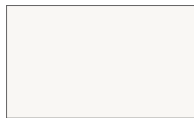
AL01
Embossed white painted



AL04
Glossy white painted



AL30
White matt painted



AL44
White fine textured



AL07
Polished aluminium



AL41
Light grey fine textured



AL03
Anthracite embossed painted



AL40
Lead grey fine textured



AL31
Black matt painted



AL09
Black embossed painted



AL05
Glossy black painted

STEEL



AC1016
Embossed yellow painted steel



AC46
Ginestra yellow fine textured



AC13
Copper plated



AC3020
Embossed red painted steel



AC45
Oxide red



AC40
Lead grey fine textured



AC47
Dove grey fine textured



AC48
Grey beige fine textured



AC514
Embossed sand painted steel



AC20
White embossed painted steel



AC30
White matt painted steel



AC44
White fine textured



AC01
Chrome plated



AC32
Grey matt painted steel



AC103
Glossy painted steel



AC11
Embossed black painted steel



AC03
Embossed black painted steel



AC31
Black matt painted steel



AC12
Black chrome plated steel

PLYWOOD



LV07
Classic Brown Olive Ash



LV03
Classic Black Cherry Elegant



LV05
Nimbus Sapeli Sycamore



LV06
Stratus Superior American Walnut



LV04
Classic Amazakoue Elegant



LV01
Classic Sapeli Mocca



LR04
Ochre stained oak



LR05
Bordeaux stained oak



LR02
Wenge-stain oak



LR10
Basalt grey



LR22
Bluegray stained



LR07
Green stained oak



LR02
Wenge-stain oak



LR01
Whitened oak



LR03
Natural oak



LR06
Anthracite stained oak



LR09
Graphite black



LR08
Black stained oak



LF01
Natural beech



LF02
Wenge-stained beech



LFR04
Ochre stained ash



LFR05
Bordeaux stained ash



LFR02
Wenge-stained ash



LFR06
Grey stained ash



LFR03
Whitened ash



LFR01
Natural ash



LFR07
Anthracite stained ash



LFR08
Black stained ash

SOLID OAK



MAR04
Ochre stained oak



MAR05
Bordeaux stained oak



MAR02
Wenge-stain oak



MAR07
Green stained oak



MAR09
White stained oak



MAR01
Whitened oak



MAR03
Natural oak



MAR06
Anthracite stained oak



MAR08
Black stained oak

SOLID BEECH



MAF04
Yellow lacquered beech



MAF03
Red lacquered beech



MAF20
Bordeaux painted



MAFC3
Wenge-stain beech



MAF514
Sand lacquered beech



MAF01
Silica grey lacquered beech



MAF06
Capri blue lacquered beech



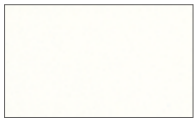
MAF22
Bluegray



MAF21
Sage green stained beech



MAF05
Green lacquered beech



MAFLG6
White lacquered



MAFGV
Natural beech



MAF10
Basalt grey



MAF09
Graphite black



MAF104
Black stained



MAF02
Black lacquered beech

SOLID ASH



MAFR20
Bordeaux stained



MAFR02
Wenge-stain



MAFR23
Cipria stained



MAFR22
Bluegray stained



MAFR21
Sage green stained beech



MAFR01
Natural



MAFR10
Basalt grey stained



MAFR09
Graphite black stained

SOLID IROKO WOOD



IRK01
Black painted

FULL-GRAIN LEATHER



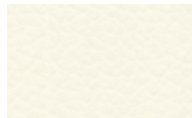
PR
Red



PC
Cuoio



PB
Ivory



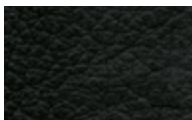
PW
White



PT
Dove grey



PTM
Dark brown



PN
Black

Felt

100% Wool



F009



F008



F015



F003



F011

ECO LEATHER

Composition: 76%PVC - 2%PU - 22%PES
 Width: 140 cm
 Weight: g/m² 540 +/-10
 Cycles (ISO 5470-2): 60000
 Colour fastness to dry rubbing (ISO 105-X12): 4/5
 Colour fastness to wet rubbing (ISO 105-X12): 4/5
 Colour fastness to light (Xenotest - blu scale) (ISO 105-B02): 6
 Adhesion (ISO 2411): > 40
 Tensile strenght (UNI EN ISO 1421): 600 long.
 Tensile strenght (UNI EN ISO 1421): 310 trasv.
 Elongation at break % (UNI EN ISO 1421): 57 long.
 Elongation at break % (UNI EN ISO 1421): 120 trasv.
 Tear strenght (UNI EN ISO 4674): 50 long.
 Tear strenght (UNI EN ISO 4674): 50 trasv.
 Cycles (UNI 4818-13): 100000
 Fireproof test: EN 1021-2:2006 / UNI 9175 classe 1 IM /
 BS5852-1:1979 part 1 - TB 117:2013



SE1007



SE1008



SE1009



SE1019



SE1020



SE1010



SE1022



SE1014



SE1021



SE1013



SE1011



SE1012



SE1023



SE1006



SE1005



SE1018



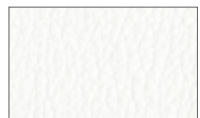
SE1003



SE1004



SE1002



SE1001



SE1015



SE1024



SE1016



SE1017

REVIVE 1 KVADRAT

Designer: Georgina Wright
 Composition: 100% Recycl. polyester FR
 Height: 140 cm
 Selvedge:
 Weight: 420 g/lin.m
 Light resistance: 5-7 (ISO 1-8)
 Abrasion: 80.000 Martindale
 Colour: there may be slight differences
 The environment: reduced environmental impact

Fireproof test
 BS 5852 part 1, ig. s. 0
 DIN 4102 B1
 EN 1021-1/2
 IMO FTP Code 2010 Part 8
 NF D 60 013 with treatment
 UNI 9175 11M
 US Cal. Bull. 117-2013
 ÖNORM B1/ Q1



RV424



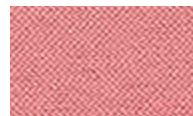
RV534



RV634



RV664



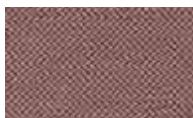
RV524



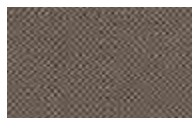
RV434



RV414



RV454



RV274



RV384



RV184



RV774



RV764



RV754



RV834



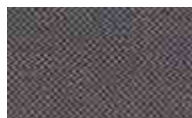
RV944



RV914



RV974



RV284



RV324



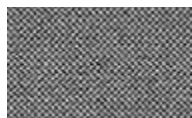
RV224



RV144



RV154



RV164



RV194

FIELD KVADRAT

Designer: Alfredo Häberli
 Composition: 100% Trevira CS
 Height: 140 cm
 Selvedge:
 Weight: 430 g/m²
 Light resistance: 6-7 (ISO 1-8)
 Abrasion: 100.000 Martindale
 Colour: there may be slight differences
 The environment: reduced environmental impact-

Fireproof test
 BS 5852 Crib 5
 BS 5852 part 1, ig. s. 0
 DIN 4102 B1
 EN 1021-1/2
 FAR 25.853
 IMO FTP Code 2010 Part 8
 NF D 60 013
 NF P 92 507 M1
 ÖNORM B1/ Q1
 SN 198 898 5.2
 UNI 9175 11M
 UNI 9177 Classe 1
 US Cal. Bull. 117-2013



FD432



FD542



FD642



FD662



FD682



FD782



FD772



FD762



FD752



FD932



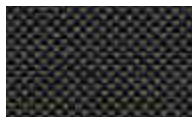
FD952



FD942



FD972



FD982



FD382



FD252



FD232



FD222



FD132



FD142



FD242



FD172



FD182



FD192

UMAMI KVADRAT

Designer: Louise Sigvardt
 Composition: 90% new wool worsted, 10% nylon
 Height: 140 cm
 Selvedge:
 Weight: Umami 420 g/lin.m -
 Umami 2 510 g/lin.m - Umami 3 470 g/lin.m
 Light resistance: 6-7 (ISO 1-8)

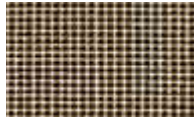
Abrasion: Umami 80.000 Martindale
 Umami 2 100.000 Martindale
 Umami 3 60.000 Martindale
 Colour: there may be slight differences
 The enviroment: natural fibres / renewable resource

Fireproof test
 AS/NZS 3837, class 2
 BS 5852 Crib 5 with treatment
 BS 5852 part 1
 EN 1021-1/2

IMO FTP Code 2010 Part 8
 NF D 60 013
 UNI 9175 11M
 US Cal. Bull. 117-2013



UM212



UM251



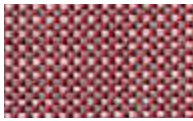
UM353



UM332



UM453



UM532



UM551



UM441



UM621



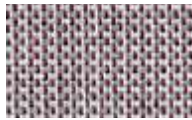
UM712



UM773



UM721



UM512



UM653



UM572



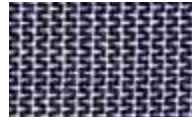
UM143



UM191



UM172



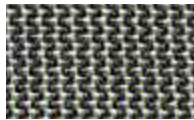
UM743



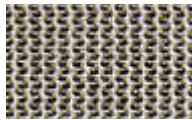
UM762



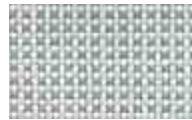
UM982



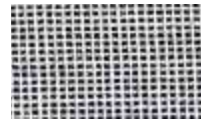
UM973



UM223



UM122



UM111

RECHECK KVADRAT

Designer: Giulio Ridolfo
 Composition: 90% WO, 10% nylon
 Width: 140 cm
 Selvedge: 1
 Weight: 420 g/mtl

Light resistance: 5-7 (ISO 105-B02)
 Abrasion: 100000 Martindale
 Colour: there may be slight differences.
 The environment: Natural fibres / renewable resource

Fireproof test
 AS/NZS 1530.3
 AS/NZS 3837 class 2
 BS 5852 Crib 5 with treatment
 BS 5852 part 1
 EN 1021-1/2

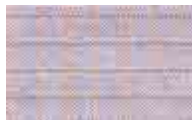
IMO FTP Code 2010:Part 8
 NF D 60 013
 NFPA 260
 UNI 9175 11M
 US Cal. Bull. 117-2013



RC 845



RC 455



RC 645



RC 875



RC 765



RC 985



RC 625



RC 165

STEELCUT TRIO 3 KVADRAT

Designer: Dijkemeijer & Ridolfo
 Composition: 90% Wool, 10% Nylon
 Height: 140 cm
 Selvedge:
 Weight: Umami 770 g/lin.m
 Light resistance: 6-7 (ISO 1-8)

Abrasion: Umami 100.000 Martindale
 Colour: there may be slight defferences
 The enviroment: natural fibres / renewable resource

Fireproof test
 AS/NZS 3837, class 2
 BS 5852 Crib 5 with treatment
 BS 5852 part 1
 DIN 4102 B1
 EN 1021-1/2
 IMO FTP Code 2010 Part 8

NF D 60 013
 NFPA 260
 SN 198 898 5.5 with FR treatment
 UNI 9175 11M
 US Cal. Bull. 117-2013
 ÖNORM B1/G1



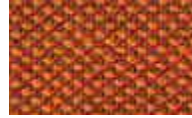
SC446



SC453



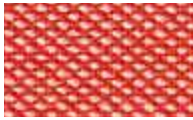
SC436



SC576



SC666



SC526



SC506



SC226



SC246



SC113



SC153



SC796



SC195



SC983



SC716



SC806



SC976



SC176



SC906



SC105

HARALD 3 KVADRAT

Designer: Raf Simons & Fanny Aronsen
 Composition: 100% Cotone
 Larghezza: 140 cm
 Cimossa: †
 Peso: 520 g/mtl

Resistenza alla luce: 5-6 (ISO 105-B02)
 Abrasion: 100000 Martindale
 Colore: possono riscontrarsi lievi differenze
 L'ambiente: Fibre naturali / risorsa rinnovabile

Fireproof test
 AS/NZS 1530.3
 BS 5852 ig. s. 5
 BS 5867, part 2, type B
 DIN 4102 B2, ÖNORM B1/G1
 EN 1021-1/2

EN 13501, C-s1, d0, glued
 IMO A.652(16)
 NF D 60 013
 NFPA 260
 UNI 9175, 11M
 US Cal. Tech. Bull. 117



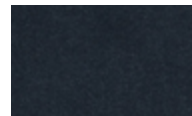
HA 443



HA 512



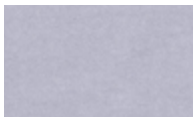
HA 343



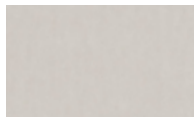
HA 182



HA 952



HA 133



HA 212



HA 283



HA 982



HA 582

CANVAS KVADRAT

Designer: Giulio Ridolfo
 Composition: 90% New wool worsted, 10%
 Nylon
 Height: 140 cm
 Selvage: †
 Weight: 480 g/mtl
 Light resistance: 6-7 (ISO 1-8)
 Abrasion: 100000 Martindale
 Colour: there may be slight differences
 The environment: In compliance with EU environmental regulations

Fireproof test
 AS/NZS 1530.3
 BS 5852 (ig. s. 2-3)
 DIN 4102 B2
 EN 1021-1/2
 IMO A.652(16)
 NF D 60 013
 NFPA 260
 UNI 9175 11M
 US Cal. Tech. Bull. 117
 ÖNORM B1/G1



CV414



CV446



CV546



CV556



CV424



CV254



CV454



CV576



CV644



CV654



CV674



CV364



CV374



CV694



CV684



CV786



CV794



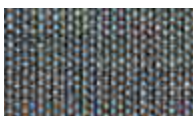
CV666



CV746



CV726



CV734



CV984



CV836



CV946



CV954



CV926



CV974



CV996



CV936



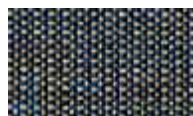
CV964



CV264



CV764



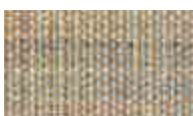
CV854



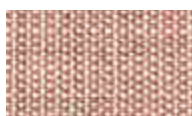
CV356



CV244



CV224



CV614



CV716



CV216



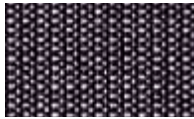
CV114



CV124



CV134



CV154



CV174

CAVA 3 KVADRAT

Designer: Louise Sigvardt
 Composition: 90% new wool worsted, 10% nylon
 Height: 140 cm
 Selvedge:
 Weight: Umami 420 g/lin.m -
 Umami 2 510 g/lin.m - Umami 3 470 g/lin.m
 Light resistance: 6-7 (ISO 1-8)
 Abrasion: Umami 80.000 Martindale
 Umami 2 100.000 Martindale
 Umami 3 60.000 Martindale
 Colour: there may be slight differences
 The environment: natural fibres / renewable resource

Fireproof test
 AS/NZS 3837, class 2
 BS 5852 Crib 5 with treatment
 BS 5852 part 1
 EN 1021-1/2
 IMO FTP Code 2010 Part 8
 NF D 60 013
 UNI 9175 11M
 US Cal. Bull. 117-2013



CA442



CA432



CA552



CA652



CA794



CA153



CA953



CA883



CA972



CA373



CA142



CA192

DIVINA MELANGE 2 KVADRAT

Designer: Finn Sködt
 Composition: 100% Wool
 Height: 150 cm
 Selvedge: 1
 Weight: 840 g/mtl
 Light resistance: 5-7 (ISO 105-B02)
 Abrasion: 45000 Martindale
 Colour: there may be slight differences.
 The environment: Natural fibres / renewable resource

Fireproof test
 AS/NZS 1530.3
 BS 5852 ig. s. 5
 BS 5867, part 2, type B
 DIN 4102 B2, ÖNORM B1/Q1
 EN 1021-1/2
 EN 13501, C-s1, d0, glued
 IMO A.652(16)
 NF D 60 013
 NFPA 260
 UNI 9175, 11M
 US Cal. Tech. Bull. 117



DM421



DM471



DM521



DM571



DM671



DM721



DM871



DM180



DM260



DM220

DIVINA 3 KVADRAT

Designer: Finn Sködt
 Composition: 100% Wool
 Height: 150 cm
 Selvedge: †
 Weight: 840 g/mtl
 Light resistance: 5-7 (ISO 105-B02)
 Abrasion: 45000 Martindale
 Colour: there may be slight differences.
 The light colours may contain dark fibres.
 The environment: Natural fibres / renewable resource

Fireproof test
 AS/NZS 1530.3
 BS 5852 ig. s. 5
 BS 5867, part 2, type B
 DIN 4102 B2, ÖNORM B1/Q1
 EN 1021-1/2
 EN 13501, C-s1, d0, glued
 IMO A.652(16)
 NF D 60 013
 NFPA 260
 UNI 9175, 11M
 US Cal. Tech. Bull. 117



DV426



DV542



DV623



DV696



DV684



DV676



DV893



DV886



DV936



DV356



DV236



DV106



DV171



DV173



DV191

FIORD KVADRAT

Designer: Louise Sigvardt & Tone Barnung
 Composition: 92% Wool, 8% nylon
 Width: 140 cm
 Selvedge: †
 Weight: 500 g/mtl
 Light resistance: 5-7 (ISO 105-B02)
 Abrasion: 60000 Martindale
 Colour: there may be slight differences.
 The environment: Natural fibres / renewable resource

Fireproof test
 BS 5852 Crib 5 with treatment
 BS 5852 part 1
 DIN 4102 B2
 EN 1021-1/2
 IMO FTP Code 2010 Part 8
 NF D 60 013
 UNI 9175 11M
 US Cal. Bull. 117-2013
 AS/NZS 3837, class 2



FO 451



FO 521



FO 581



FO 771



FO 751



FO 101



FO 271



FO 171



FO 971



FO 991



FO 191

GLOW KVADRAT

Designer: Dijkmeijer & Ridolfo
 Composition: 90% Wool, 10% nylon
 Height: 140 cm
 Selvedge: ↔
 Weight: 360 g/m²

Light resistance: 6-7 (ISO 105-B02)
 Abrasion: 60000 Martindale
 Colour: there may be slight differences.
 The light colours may contain dark fibres.
 The environment: In compliance with EU environmental regulations

Fireproof test
 BS 5852 ig. s. 3
 EN 1021-1/2
 IMO 2010 p. 8
 NF D 60 013
 UNI 9175, 11M
 US Cal. Tech. Bull. 117
 Önorm B1/Q1



GL443



GL453



GL543



GL663



GL673



GL753



GL773



GL793



GL733



GL723



GL923



GL933



GL873



GL893



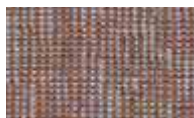
GL393



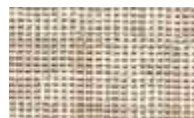
GL383



GL363



GL343



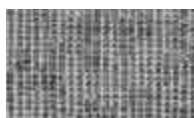
GL213



GL123



GL143



GL1153



GL183

VENICE PINTAIL

Composition: 90% Olefine, 10% Polietilene
 Total width: 140 cm (UNI EN 1773)
 Weight per square meter: 230 g/m² (± 4%) (UNI 5114)
 Abrasion resistance ("Martindale"), N° cicli: 15000
 Light resistance: 7-8 (ISO 105-B02)
 Pilling resistance: 5 (ISO 12945- 2)



WATER-REPELLENT

ANTIBACTERIAL



PV2451



PV3072



PV5441



PV7013



PV5681



PV6371



PV7442



PV8231



PV9999

MIAMI PINTAIL

Composition: 88% Polyester, 12% Polyethylene
 Total width: 140 cm (UNI EN 1773)
 Weight per square meter: 260 g/m² (± 4%) (UNI 5114)
 ("Martindale") Abrasion resistance. Rubs: 80000
 Light resistance: 7 (ISO 105-B02)
 Pilling resistance: 5 (ISO 12945-2)



ON REQUEST 

WATER-REPELLENT



PM1102



PM2009



PM3560



PM1986



PM3001



PM11-3006



PM11-5010



PM5011



PM10-5018



PM11-5004



PM5001



PM7746



PM10-6025



PM11-6007



PM13-6003



PM11-8002



PM11-8008



PM7744



PM6003



PM0000



PM11-7004



PM0978



PM1000

BYTE

Composition 100%PL
 Total width: 140 cm (UNI EN 1773)
 Weight per linear meter: 460 g/LM (± 4%)
 ("Martindale") Abrasion resistance. Rubs: 30.000 End point (ISO 12947- 2)
 Pilling resistance: 4/5 (ISO 12945-2)
 Tensile strength: Length 1000 - Width 1300 (ISO 13934-1)

Seam slippage at less than 6 mm: Length >200 - Width >200 (ISO 13936-1)
 Colour fastness rubbing (dry): staining CO 4/5 (ISO 105-X12)
 Colour fastness rubbing (wet): staining CO 4/5 (ISO 105-X12)
 Colour fastness artificial light: 3/4 (ISO 105 B02)



NO-SHRINK
 WATER-REPELLENT



BY804



BY307



BY303



BY003



BY707



BY700



BY100



BY400



BY605



BY401



BY600



BY402



BY403



BY405



BY602

PATINA CAMIRA

Designer: Finn Sködt
 Composition: 69% Wool, 22% Flax, 8% Polyamide, 1% Viscose
 Width: 140 cm
 Selvage: ↑
 Weight: 330 g/m²

Light resistance: 5 (ISO 105-B02)
 Abrasion: 100000 Martindale
 Colour: there may be slight differences.
 The light colours may contain dark fibres.
 The environment: Certified to the EU Ecolabel

Fireproof test
 EN 1021 - 1
 EN 1021 - 2
 BS 7176 Low Hazard
 BS 5852 Ignition Source 5
 BS 7176 Medium Hazard
 ÖNORM B 3825 & A 3800-1
 UNI 9175 Classe 1 IM
 BS 5867-2: Type B



PT25



PT26



PT09



PT15



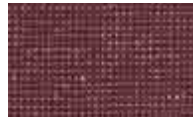
PT27



PT36



PT18



PT42



PT14



PT40



PT22



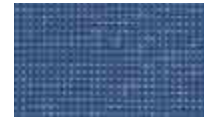
PT29



PT19



PT17



PT06



PT23



PT31



PT01



PT32



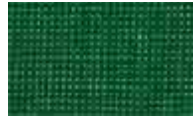
PT28



PT39



PT21



PT38



PT37



PT41



PT05



PT06



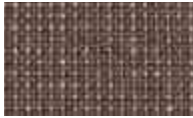
PT07



PT08



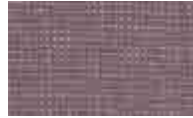
PT33



PT30



PT10



PT43



PT13



PT11



PT16



PT02



PT12



PT34



PT04



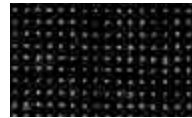
PT24



PT03



PT20



PT35

FLASH NO-SHRINK

Composition: 100% PP
 Total width: 140 cm (UNI EN 1773)
 Weight per linear meter: 450 g/LM (± 4%)
 Weight per square meter: 320 g/m² (± 4%) (UNI 5114)
 ("Martindale") Abrasion resistance. Rubs: 70000 End point (ISO 12947- 2)
 Pilling resistance: 5 (ISO 12945-2)

Tensile strength: Length 1398,87 - Width 1091,41 (ISO 13934-1)
 Maximum elongation: Length 48,23% - 26,33% Width (ISO 13934-1)
 Seam slippage (6 mm): Length >200 - Width >200 (ISO 13936-1)
 Colour fastness rubbing (dry): staining CO 4/5 (ISO 105-X12)
 Colour fastness rubbing (wet): staining CO 4/5 (ISO 105-X12)
 Colour fastness artificial light. Colour change: light 5, medium 4, dark 5 (ISO 105 B02)



NO-SHRINK



FL501



FL500



FL301



FL305



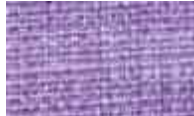
FL300



FL310



FL900



FL001



FL005



FL003



FL004



FL002



FL705



FL700



FL707



FL710



FL810



FL804



FL800



FL807



FL111



FL400



FL101



FL100



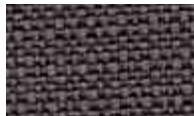
FL402



FL408



FL600



FL601



FL409



FL403



FL407



FL602



FL405



FL200

CORIAN®



CO01
Limestone prima



CO02
Cosmos Prima

TERRAZZO



TZ02



TZ01

FENIX® NTM®



FX04
Bordeaux



FX01
White



FX05
Light grey

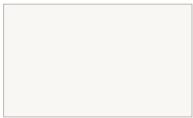


FX03
Anthracite



FX02
Black

LIGHT SURFACE



LS02
White

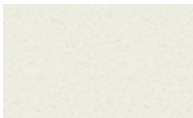


LS05
Anthracite

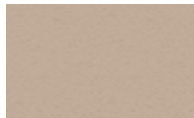


LS03
Black

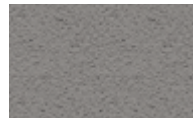
LAMINATE - Laminiert - Laminé



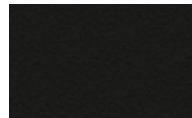
LM01
White



LM07
Sand

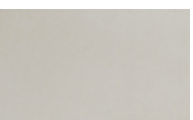


LM08
Cement grey

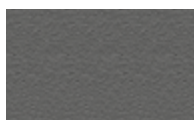


LMO2
Black

MICROTOPPING



MT07
Dove grey microtopping



MT06
Anthracite microtopping

MATT WOOD



MW01
White



MW02
Black

NEWPANN



NEW04
Embossed white painted



NEW02
Whitened oak



NEW01
Grey oak



NEW05
Embossed anthracite painted



NEW03
Painted black oak



NEW06
Embossed black painted

MDF VENEER



MDF09
Natural beech veneer



MDF06
Whitened oak veneer



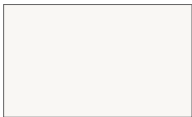
MDF08
Natural oak veneer



MDF07
Wenge-stain oak veneer



MDF10
Wenge-stain beech veneer



MDF03
Embossed white lacquered



MDF11
Embossed light grey lacquered



MDF05
Embossed anthracite lacquered



MDF02
Embossed black lacquered

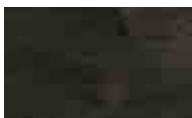


MDF12
Embossed bordeaux lacquered

HERITAGE OAK



RH03
Heritage natural oak



RH08
Heritage black oak

SYMBOLS



Fireproof.



Hand wash at max temperature indicated.



Do not wash.



Do not bleach.



Dry clean with usual solvents, based on perchloroethylene, solvent R113 and hydrocarbon (no trichloroethylene).



Iron. The dots in the centre of the symbol indicate the temperature: One dot: iron cold (110°): acrylic, nylon, acetate. Two dots: iron warm (150°): polyester, wool. Three dots: iron hot (200°): cotton, linen.



Do not tumble dry.

Infiniti reserves the right to change or technically improve the design and specifications of any of its products at any time and at its discretion without notice.

INFINITI

Via Ca' Leoncino, 2 - 31030
Castello di Godego (TV) - ITALY

ph +39 0423 7616

www.infinitidesign.it

Concept and Design
TAILOR&TAILOR
thetailors.it

Photo
STUDIO B2 - ORLANDO BONALDO

3D Images
BRUGER STUDIO
brugerstudio.com

-
IMAGINE CG
imaginecg.it

Colour separation and Print
KAPPADUE
kappadue.net