



infiniti

FINISHES

Polypropylene



S020
White



S021
Pearl grey



R7001
Silver grey



S007
Cement grey



S011
Anthracite



R1012
Mustard



S514
Sand



R3020
Red



S022
Tobacco



S513
Military green



R9001
Off-white



R9010
Pure white



R8022
Coal black



R7015
Slate grey



P421C
Almond grey



P480C
Cipria



P557C
Light green



P7608U
Marsala



R7040
Medium grey



R7035
Light grey



R1027
Curry



R6003
Olive green



R1020
Khaki green



R2001
Carrot orange



R1034
Peach

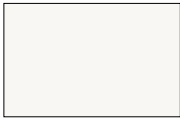


S01
Black



S503
Powder blue

Post Consumer Industrial Polypropylene



IS020
White



IR7001
Silver grey



IS011
Anthracite



IR1012
Mustard



IS514
Sand



IS022
Tobacco



IS513
Military green



IR9001
Off-white



IR8022
Coal black



IP421C
Almond grey



IP480C
Cipria



IP7608U
Marsala

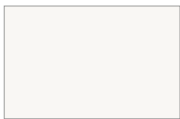


IS001
Black



IS503
Powder blue

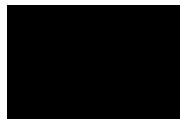
Polyamide



S101
White

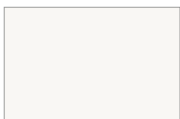


S117
Silica grey



S102
Black

Polyurethane



S145
White



R9005
Black



R3002
Red

Metals



11
Embossed anthracite



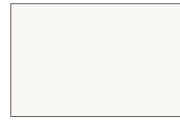
20
Embossed white



03
Embossed black



514
Embossed sand



30
Matt white



31
Matt black



7006F
Dove grey fine textured



54
Green fine textured



7016 F
Lead grey fine textured



7035F
Light grey fine textured



43
Aquamarine blue fine textured



1032F
Honey yellow fine textured



3009F
Oxide red fine textured



1019F
Beige grey fine textured



35
Polished grey



12
Black chrome



13
Copper chrome



14
Antique brass



01
Chromium plated



503F
Powder blue fine textured



9004F
Black fine textured



70
Cipria



26
Nude Aluminium

Solid ash + iroko



FRTA04
Black stained solid ash



FRTA59
Basalt grey ash



FRTA63
Bluegrey stained ash



FRTA72
Cipria stained solid ash



FRAVAN
Natural solid ash



IKTO04
Black painted iroko

Solid beech



FGTA04
Black stained solid beech



FGLP75L
Black lacquered solid beech



FGLP04G
Black embossed lacquered solid beech



FGLP74L
Grey lacquered solid beech



FGLP27G
Silica grey lacquered solid beech



FGLP76L
Green lacquered solid beech



FGLP06G
White embossed lacquered beech



FGVAN
Natural solid beech



FGVPN
Natural solid beech

Solid oak + Plywood



ROTA04
Black stained oak



ROTA28
Anthracite stained oak



ROTA59
Basalt grey oak



ROTA60
Terra brown oak



ROVAN
Natural oak



FRTA04
Black stained ash



FRTA28
Anthracite stained ash



FRTA74
Grey stained ash



FRVAN
Natural ash



V005
Classic amazouke elegant



V006
Nimbus sapeli sycamore



V004
American walnut

Walnut



NOVAN
Walnut

Heritage Oak



RH03
Natural Heritage oak



RH08
Black Heritage oak

Heritage Ash

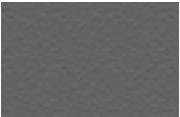


FRH01
Natural heritage ash

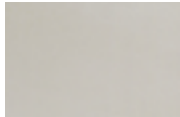


FRH02
Black heritage ash

Microtopping



MT06
Anthracite microtopping



MT07
Dove grey microtopping

Matt Wood



MW01
White



MW02
Black

Fenix



FX01
White



FX02
Black



FX03
Anthracite

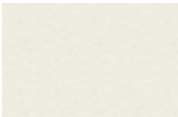


FX04
Bordeaux



FX05
Light grey

Laminate



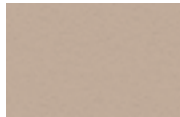
LM01
White



LM02
Black



LM08
Cement grey



LM07
Sand

F Canvas 2

Designer: Giulio Ridolfo
 Composition: 90% New wool worsted, 10% Nylon
 Height: 140 cm
 Selvedge: 1
 Weight: 480 g/mtl

Light resistance: 6-7 (ISO 1-8)
 Abrasion: 100000 Martindale
 Colour: there may be slight differences

The environment: In compliance with EU environmental regulations
 Fireproof test AS/NZS 1530.3
 BS 5852 ig. s. 2-3

DIN 4102 B2
 EN 1021-1/2
 IMO A.652(16)
 NF D 60 013
 NFPA 260
 UNI 9175 1IM

US Cal. Tech. Bull. 117
 ÖNORM B1/Q1



CV414



CV446



CV546



CV556



CV424



CV254



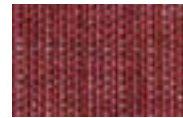
CV454



CV576



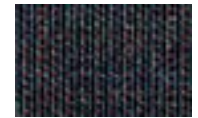
CV644



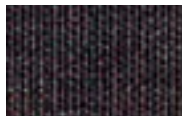
CV654



CV674



CV364



CV374



CV694



CV684



CV786



CV794



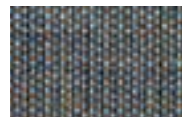
CV666



CV746



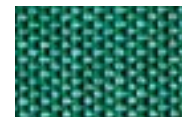
CV726



CV734



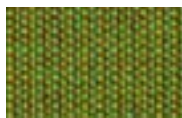
CV984



CV836



CV946



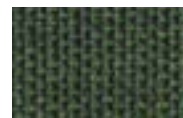
CV954



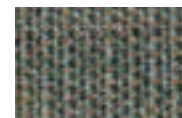
CV926



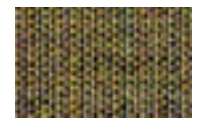
CV974



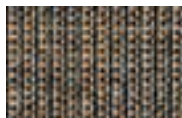
CV996



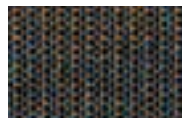
CV936



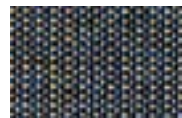
CV964



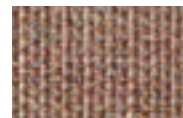
CV264



CV764



CV854



CV356



CV244



CV224



CV614



CV716



CV216



CV114



CV124



CV134



CV154



CV174



CV566

G **Divina 3**

Designer: Finn Sködt
Composition: 100% Wool
Height: 150 cm
Selvedge: †
Weight: 840 g/mtl
Light resistance: 5-7 (ISO 105-B02)

Abrasion: 45000 Martindale
Colour: there may be slight differences.
The light colours may contain dark fibres.
The environment: Naturale fibres / renewable resource

Fireproof test
AS/NZS 1530.3
BS 5852 ig. s. 5
BS 5867, part 2, type B
DIN 4102 B2, ÖNORM B1/Q1
EN 1021-1/2

EN 13501, C-s1, d0, glued
IMO A.652(16)
NF D 60 013
NFPA 260
UNI 9175, 11M
US Cal. Tech. Bull. 117



DV106



DV171



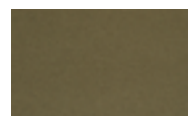
DV173



DV191



DV236



DV356



DV426



DV542



DV623



DV676



DV684



DV696



DV886



DV893



DV936

G Divina Melange 3

Designer: Finn Sködt
 Composition: 100% Wool
 Height: 150 cm
 Selvedge: †
 Weight: 840 g/mtl
 Light resistance: 5-7 (ISO 105-B02)

Abrasion: 45000 Martindale
 Colour: there may be slight differences.
 The environment: Naturale fibres / renewable resource
 Fireproof test AS/NZS 1530.3

BS 5852 ig. s. 5
 BS 5867, part 2, type B
 DIN 4102 B2, ÖNORM B1/Q1
 EN 1021-1/2
 EN 13501, C-s1, d0, glued
 IMO A.652(16)
 NF D 60 013

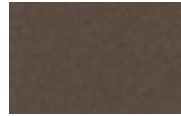
NFPA 260
 UNI 9175, 11M
 US Cal. Tech. Bull. 117



DM120



DM180



DM260



DM0427



DM471



DM547



DM571



DM647



DM731



DM871

E Field 2

Designer: Alfredo Häberli
Composition: 100% Trevira
CS
Height: 140 cm
Selvedge:
Weight: 430 g/mtl

Light resistance: 6-7
(ISO 1-8)
Abrasion: 100.000
Martindale
Colour: there may be slight
differences

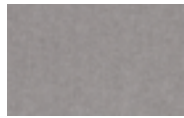
The environment:
reduced environmental
impact
Fireproof test
BS 5852 Crib 5
BS 5852 part 1, ig. s. 0
DIN 4102 B1

EN 1021-1/2
FAR 25.853
IMO FTP Code 2010 Part 8
NF D 60 013
NF P 92 507 M1
ÖNORM B1/ Q1

SN 198 898 5.2
UNI 9175 1IM
UNI 9177 Classe 1
US Cal. Bull. 117-2013



FD123



FD132



FD142



FD173



FD182



FD192



FD222



FD233



FD242



FD343



FD373



FD443



FD463



FD623



FD643



FD662



FD663



FD673



FD693



FD723



FD733



FD763



FD773



FD782



FD793



FD843



FD933



FD943



FD963



FD983

G **Fiord**

Designer: Louise Sigvardt & Tone Barnung
 Composition: 92% Wool, 8% nylon
 Width: 140 cm
 Selvedge: †
 Weight: 500 g/mtl

Light resistance: 5-7 (ISO 105-B02)
 Abrasion: 60000 Martindale
 Colour: there may be slight differences.
 The environment: Naturale fibres / renewable resource

Fireproof test
 BS 5852 Crib 5 with treatment
 BS 5852 part 1
 DIN 4102 B2
 EN 1021-1/2
 IMO FTP Code 2010 Part 8

NF D 60 013
 UNI 9175 1IM
 US Cal. Bull. 117-2013
 AS/NZS 3837, class 2



FO101



FO171



FO191



FO271



FO451



FO521



FO581



FO751



FO771



FO791



FO991

F Glow

Designer: Dijkmeijer & Ridolfo
 Composition: 90% Wool, 10% nylon
 Height: 140 cm
 Selvedge: ->
 Weight: 360 g/mtl

Light resistance: 6-7 (ISO 105-B02)
 Abrasion: 60000 Martindale
 Colour: there may be slight differences.
 The light colours may contain dark fibres.

The environment: In compliance with EU environmental regulations
 Fireproof test BS 5852 ig. s. 3
 EN 1021-1/2
 IMO 2010 p. 8

NF D 60 013
 UNI 9175, 11M
 US Cal. Tech. Bull. 117
 Önorm B1/Q1



GL443



GL453



GL543



GL663



GL673



GL753



GL773



GL793



GL733



GL723



GL923



GL933



GL873



GL893



GL393



GL383



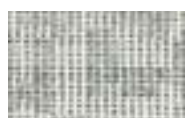
GL363



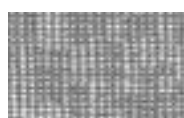
GL343



GL0213



GL0123



GL143



GL1153



GL183

G Harald 3

Designer: Raf Simons & Fanny Aronsen
 Composition: 100% Cotone
 Larghezza: 140 cm
 Cimossa: -
 Peso: 520 g/mtl
 EN 13501, C-s1, d0, glued

IMO A.652(16)
 NF D 60 013
 NFPA 260
 UNI 9175, 11M
 US Cal. Tech. Bull. 117
 Resistenza alla luce: 5-6 (ISO 105-B02)

Abrasion: 100000 Martindale
 Colore: possono riscontrarsi lievi differenze
 L'ambiente: Fibre naturali / risorsa rinnovabile
 Fireproof test

AS/NZS 1530.3
 BS 5852 ig. s. 5
 BS 5867, part 2, type B
 DIN 4102 B2, ÖNORM B1/Q1
 EN 1021-1/2



HA432



HA512



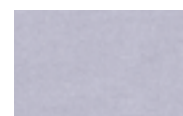
HA343



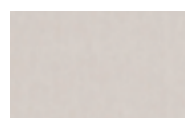
HA182



HA952



HA133



HA212



HA283



HA982



HA582

G Patio

Designer: Karina Nielsen
Rios
Composition: 100% Trevira
CS
Height: 140 cm
Selvedge: ->
Weight: 560 g/lin.m

Light resistance: 7 (ISO 105-B02)
Abrasion: 50000 Martindale
Colour: there may be slight differences.
The light colours may contain dark fibres.

The environment: In compliance with EU environmental regulations
Fireproof test BS 5852 ignition source 5
BS 5852 part 1 ignition source 0

DIN 4102 B1, EN 1021-1/2
IMO FTP Code 2010 Part 8
NF D 60 013
NF P 92 507 M1
UNI 9175 1IM
US Cal. Bull. 117-2013
ÖNORM B1/Q1



PA100	PA110	PA140	PA150	PA170	PA200
PA210	PA220	PA230	PA340	PA370	PA410
PA430	PA440	PA450	PA550	PA570	PA650
PA730	PA740	PA750	PA780	PA840	PA970

G Planum

NomePlanum - 0111
progettistaColore grezzo
genereTappzeria Febrik
ModelloSolido
Composizione44% lana
vergine, 42% poliestere,
14% nylon

Peso700 g / lin.m
Larghezza160 cm
durabilità100.000
Martindale
Pilling4
Solidità alla luce5-6 (ISO
1-8)



PL111	PL141	PL201	PL241	PL271	PL351
PL411	PL441	PL521	PL551	PL571	PL681
PL711	PL741	PL751	PL791	PL921	PL941
PL961	PL971				

C Reflect

Designer: Patricia Urquiola
Composition: 100% poliestre riciclato
Height: 140 cm
Selvedge: ↔
Weight: 430 g
Light resistance: 6-7

(ISO 1-8)
Abrasion: 100.000 Martindale
Colour: there may be slight differences.
Fireproof test AS/NZS 3837

class 1, ASTM E84 Class A
ASTM E84 Class B incollato
BS 5852 crib 5 con trattamento ignifugo, BS 5852 part 1 con trattamento ignifugo, EN1021-1/2, US Cal. Bull117-2013



RF104



RF154



RF164



RF174



RF184



RF194



RF204



RF224



RF274



RF374



RF404



RF444



RF464



RF564



RF574



RF614



RF644



RF674



RF694



RF714



RF774



RF794



RF824



RF884



RF944



RF984



RF994

D Revive 1

Designer: Georgina Wright
 Composition: 100% Recycl.
 polyester FR
 Height: 140 cm
 Selvedge:
 Weight: 420 g/lin.m

Light resistance: 5-7
 (ISO 1-8)
 Abrasion: 80.000 Martindale
 Colour: there may be slight
 differences
 The environment: reduced

environmental impact
 Fireproof test
 BS 5852 part 1, ig. s. 0
 DIN 4102 B1
 EN 1021-1/2
 IMO FTP Code 2010 Part 8

NF D 60 013 with treatment
 UNI 9175 1IM
 US Cal. Bull. 117-2013
 ÖNORM B1/ Q1



RV424



RV534



RV634



RV664



RV524



RV434



RV414



RV454



RV274



RV384



RV184



RV774



RV764



RV754



RV834



RV944



RV914



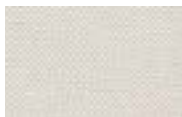
RV974



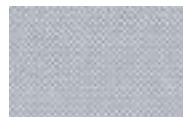
RV284



RV324



RV224



RV144



RV154



RV164



RV194

F Steelcut Trio 3

kvadrat

Designer: Dijkemeijer & Ridolfo
 Composition: 90% Wool, 10% Nylon
 Height: 140 cm
 Selvedge:
 Weight: Umami 770 g/lin.m

Light resistance: 6-7 (ISO 1-8)
 NF D 60 013
 NFPA 260
 SN 198 898 5.5 with FR treatment
 UNI 9175 1IM

US Cal. Bull. 117-2013
 ÖNORM B1/Q1
 Abrasion: Umami 100.000
 Martindale
 Colour: there may be slight differences
 The environment: natural

fibres / renewable resource
 Fireproof test
 AS/NZS 3837, class 2
 BS 5852 Crib 5 with treatment
 BS 5852 part 1
 DIN 4102 B1

EN 1021-1/2
 IMO FTP Code 2010 Part 8



SC446



SC453



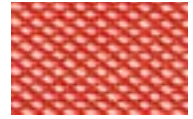
SC436



SC576



SC666



SC526



SC506



SC226



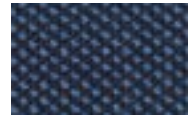
SC246



SC113



SC153



SC796



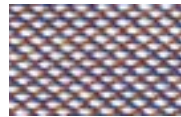
SC195



SC983



SC716



SC806



SC976



SC176



SC906



SC105

E Oceanic

camira

Composition: 100% post-consumer recycled polyester, including 50% SEAQUAL yarn
 Weight per square meter:

497 g/m2 ±5% Heavy duty / 10 year guarantee. Independently certified to ≥100,000 Martindale cycles

Fastness to Rubbing: Wet: 4, Dry: 4 (ISO 105 - X12)
 Flammability: EN 1021 - 1&2
 Cigarette & Match
 BS 7176 Low Hazard



OOC01



OOC02



OOC03



OOC04



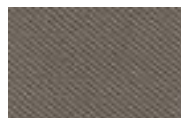
OOC05



OOC06



OOC07



OOC08



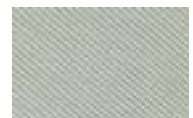
OOC10



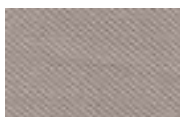
OOC11



OOC12



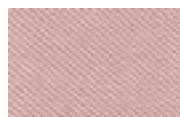
OOC13



OOC14



OOC15



OOC16



OOC09

C Patina

Designer: Finn Sködt
 Composition: 69% Wool,
 22% Flax, 8% Polyamide,
 1% Viscose
 Width: 140 cm
 Selvedge: 1
 Weight: 330 g/mtl

Fireproof test
 EN 1021 - 1
 EN 1021 - 2
 BS 7176 Low Hazard
 BS 5852 Ignition Source 5
 BS 7176 Medium Hazard
 ONORM B 3825 & A 3800-1

UNI 9175 Classe 1 IM
 BS 5867-2: Type B
 Light resistance: 5 (ISO
 105-B02)
 Abrasion: 100000
 Martindale
 Colour: there may be slight

differences.
 The light colours may
 contain dark fibres.
 The environment: Certified
 to the EU Ecolabel



PT25



PT26



PT09



PT15



PT27



PT36



PT18



PT42



PT14



PT40



PT22



PT29



PT19



PT17



PT06



PT23



PT31



PT01



PT32



PT28



PT39



PT21



PT38



PT37



PT41



PT05



PT06



PT07



PT08



PT33



PT30



PT10



PT43



PT13



PT11



PT16



PT02



PT12



PT34



PT04



PT24



PT03



PT20



PT35

E Yoredale

Composition: 95% Wool, 3% Polyester, 2% Polyamide
Total width: 138 cm minimum
Weight per linear meter: 700 g/m2 ±5%
("Martindale") Abrasion

resistance. Heavy duty / 10 year guarantee. Independently certified to ≥50,000 Martindale cycles

Flammability
EN 1021 - 1&2 Cigarette & Match
BS 7176 Low Hazard
ONORM B 3825 & A 3800-1 (58kg/m3 CMHR Foam)

UNI 9175 Classe 1 IM
BS 5852 Ignition Source 5 when FR treated BS 7176 Medium Hazard when FR treated



YR01



YR02



YR03



YR04



YR12



YR14



YR15



YR16



YR17



YR18



YR20



YR25

D Disco Coex



Composition: 70% cotton,
20% acrylic, 5% viscose,
5% linen
Total width: 150 cm
Total length: 25m
Weight per square meter:

430 g/m2 (± 4%) (UNI 5114)
("Martindale") Abrasion
resistance. Rubs: 50000
End point (ISO 12947- 2)
Acoustic Absorption: UUNI
EN ISO 354:2003

Fastness to Rubbing: 4/5
(ISO 105 B02)
Flammability: IMO - 1 IM UNI
9175 - EN 1021-1-2006 - EN
1021-2-2006 - CRIB 5 - TB
117:2013

Is a Fireproof



No-shrink



DI12



DI33



DI27



DI35



FL40



DI28



DI30



DI1



DI10



DI7



DI9



DI23



DI6



DI26



DI5



DI24



DI43



DI38



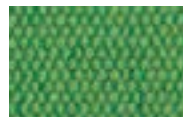
DI37



DI36



DI32



DI41



DI8



DI31



DI17

A Madrid 3D

Article: madrid 3d (code: 129)
 Cloth fabric, 100% pp
 Polipropilene f.R., Available
 in 19 variant colours, prompt
 delivery
 Composition: Polipropilene
 fr
 Production: 100% made in
 italy (produced from the

yarn to finished fabric in our
 italian factories)
 Weight per square meter:
 250 g/mq.
 Height: 143 cm.
 Roll lenght: 50 m.
 Resistances
 Abrasion: 100000
 martindale cycles
 Light fastness (en iso

105-b02): 5
 Fastness to rubbing (en iso
 105-x12) wet 4/5, dry 4/5
 Uni en iso 354:2003
 Acoustic absorption
 1.Im uni 9175
 Bs 5852:part 1:1979
 Bs en 1021-1:2006
 Bs en 1021-2:2006
 Bs 5852:2006 (crib 5)

California technical bulletin
 117:2013
 lmo - 2010 ftp code
 Din 4102-1 (may 1998)
 M1
 Oeko-tex



MA536



MA537



MA538



MA539



MA547



MA540



MA542



MA543



MA545



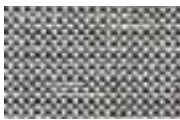
MA548



MA549



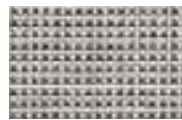
MA552



MA555



MA556



MA558



MA561



MA562



MA564



MA565

A Byte

Composition 100%PL
 Total width: 140 cm (UNI
 EN 1773)
 Weight per linear meter: 460
 g/LM (± 4%)
 ("Martindale") Abrasion
 resistance. Rubs: 30.000
 End point (ISO 12947- 2)
 Pilling resistance: 4/5 (ISO
 12945-2)

Tensile strength: Length
 1000 - Width 1300 (ISO
 13934-1)
 Seam slippage at less than
 6 mm: Length >200 - Width
 >200 (ISO 13936-1)
 Colour fastness rubbing
 (dry): staining CO 4/5 (ISO
 105-X12)
 Colour fastness rubbing

(wet): staining CO 4/5 (ISO
 105-X12)
 Colour fastness artificial
 light: 3/4 (ISO 105 B02)



No-shrink
 water-repellent



BY804



BY307



BY303



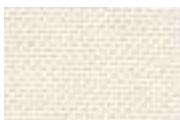
BY003



BY707



BY700



BY100



BY400



BY605



BY401



BY600



BY402



BY403



BY405



BY602

A Flash No-Shrink

Composition: 100% PP
Total width: 140 cm (UNI EN 1773)
Weight per linear meter: 450 g/LM (± 4%)
Weight per square meter:

320 g/m2 (± 4%) (UNI 5114) ("Martindale") Abrasion resistance. Rubs: 70000
End point (ISO 12947- 2)
Pilling resistance: 5 (ISO 12945-2)

Tensile strength: Length 1398,87 - Width 1091,41 (ISO 13934-1)
Maximum elongation: Length 48,23% - 26,33% Width (ISO 13934-1)

Seam slippage (6 mm): Length >200 - Width >200 (ISO 13936-1)
Colour fastness rubbing (dry): staining CO 4/5 (ISO 105-X12)

Colour fastness rubbing (wet): staining CO 4/5 (ISO 105-X12)
Colour fastness artificial light. Colour change: light 5, medium 4, dark 5 (ISO

105 B02) 
No-shrink



FL501



FL500



FL301



FL305



FL300



FL310



FL900



FL001



FL005



FL003



FL004



FL002



FL705



FL700



FL707



FL710



FL810



FL804



FL800



FL807



FL111



FL400



FL101



FL100



FL402



FL408



FL600



FL601



FL409



FL403



FL407



FL602



FL405



FL200



L Full-grain leather



PR
Red



PC
Cuoio



PB
Ivory



PW
Bianco



PT
Dove Grigio



PTM
Dark brown



PN
Nero

B Eco Leather



Composition: 76%PVC - 2%PU - 22%PES
 Width: 140 cm
 Weight: g/m2 540 +/-10
 Cycles (ISO 5470-2): 60000
 Colour fastness to dry rubbing (ISO 105-X12): 4/5
 Colour fastness to wet rubbing (ISO 105-X12): 4/5
 Colour fastness to light (Xenotest - blu scale) (ISO 105-B02): 6

Adhesion (ISO 2411): > 40
 Tensile strenght (UNI EN ISO 1421): 600 long.
 Tensile strenght (UNI EN ISO 1421): 310 trasv.
 Elongation at break % (UNI EN ISO 1421): 57 long.
 Elongation at break % (UNI EN ISO 1421): 120 trasv.
 Tear strenght (UNI EN ISO 4674): 50 long.
 Tear strenght (UNI EN ISO 4674): 50 trasv.

Cycles (UNI 4818-13): 100000
 Fireproof test: EN 1021-2:2006 / UNI 9175 classe 1 IM /
 BS5852-1:1979 part I - TB 117:2013



SE1007



SE1008



SE1009



SE1019



SE1020



SE1010



SE1022



SE1014



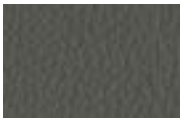
SE1021



SE1013



SE1011



SE1012



SE1023



SE1006



SE1005



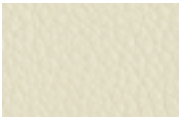
SE1018



SE1003



SE1004



SE1002



SE1001



SE1015



SE1024



SE1016



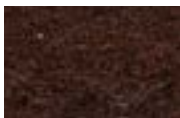
SE1017

Felt

100% Wool



F009



F008



F015



F003



F011

PARKHAUSE

infiniti

Colours shown are used for references only and may look different in reality.
Please contact infiniti or your retailer to receive more information.

Infiniti reserves the right to make modifications and improvements of a technical or aesthetic nature to the products at any time without notice.

For further information, please visit www.infinitidesign.it

I colori visualizzati sono puramente indicativi e possono variare rispetto alla realtà.

Rivolgersi ad infiniti o al proprio rivenditore per maggiori informazioni.

Infiniti si riserva di apportare modifiche e/o migliorie di carattere tecnico o estetico ai propri modelli e prodotti in qualsiasi momento e senza preavviso.

Per maggiori informazioni visitare il sito www.infinitidesign.it