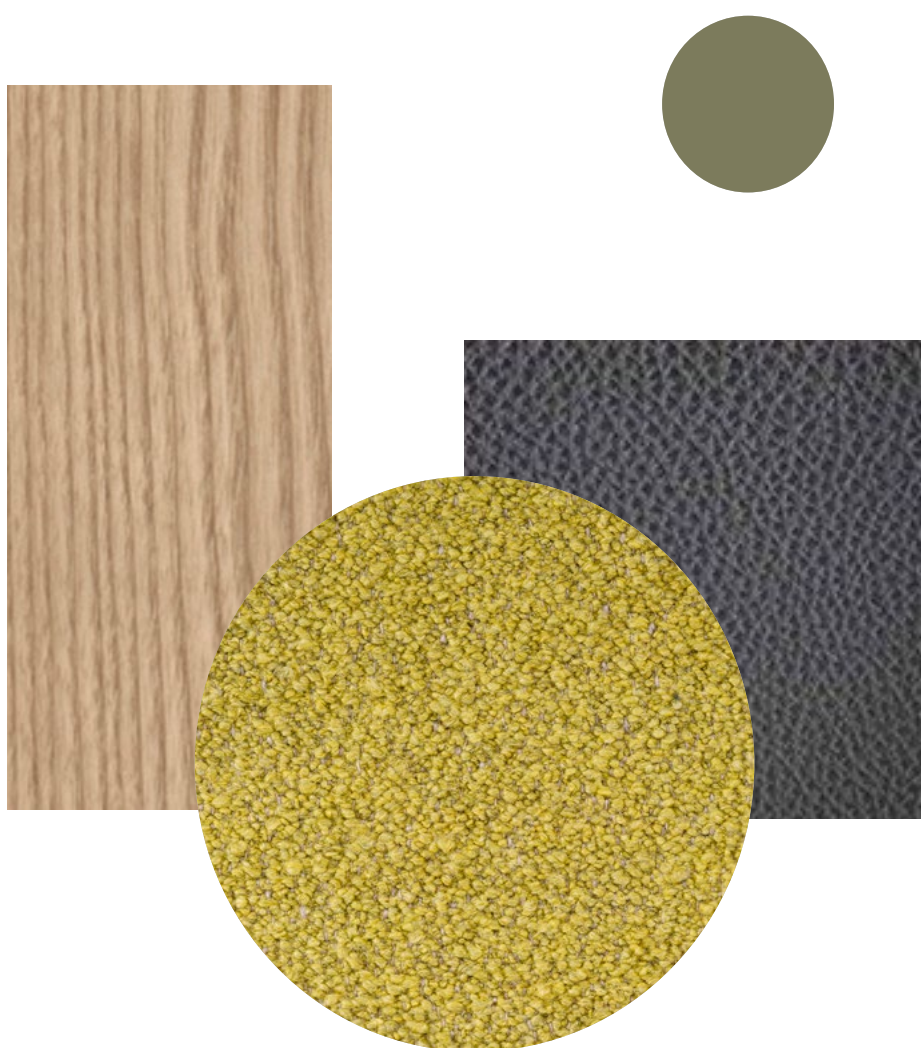


Materials Book Home collection / 2021

VALID FROM 01. 10. 2021



Content

- 4** Keep in Mind
- 5** Materials & Maintenance
- 6** Solid Wood Oils & Lacquers collection
- 7** Table tops
- 8** Metal colour Collection
- 9** Upholstery & Cushions

- 10** Product Chart: Home Collection
- 12** Fabrics & Leathers specifications

- 14** · Fabric Category 100
- 15** · Fabric Category 200
- 19** · Fabric Category 300
- 26** · Fabric Category 400
- 30** · Fabric Category 500
- 36** · Fabric Category 600
- 38** · Fabric Category 700

- 40** · Leather Category 60
- 41** · Leather Category 80

- 45** · Outdoor fabric category 300

- 48** Quick Ship

Keep in Mind when making your Choice

COF - CUSTOMER OWN FABRIC

- price from the Price List refers to fabrics without any patterns
- all orders submitted in COF needs to be approved from the manufacturer based on the delivered sample, min. size 15x20 cm
- for use of the fabrics with pattern it's necessary to submit a min. 1 ml sample, in order to make estimation of consumption of the fabric and additional work that will determine the price
- Prostoria is not responsible for any claims related to the fabric quality
- fabric needs to be delivered min. 15 days prior to the dispatch date

COL - CUSTOMER OWN LEATHER

- possibility of using leather selected by the customer is available solely with prior submission of a sample, size of approx. 20 x 30 cm
- leather consumption depends on the leather quality; natural or prefabrication flaws might increase required quantities
- Prostoria is not responsible for any claims related to the leather quality
- leather needs to be delivered min. 15 days prior to the dispatch date

Materials & Maintenance

To maintain the quality and durability of your product for as long as possible, you should follow these basic and simple guidelines:

- avoid placing the product near a source of heat and exposing it to direct sunlight as this may cause alternations in the tone and affect the hardness of the product.
- when moving the product, be careful not to drag it on the floor as such action may result in damage both to the product and the floor
- perform regular checks of the condition of the sliders as it may result in damage of the product and the floor; you can purchase additional or new sliders (plastic or felt) at the nearest salon or at the dealer where you purchased the product
- for stackable products, check the condition of the safety components; if they fall out, the products may be damaged, and you should contact the nearest salon or the dealer where you've purchased the product
- for tables and coffee tables, avoid partial covering of the surface as this may cause discoloration of the surface
- for surfaces used for shelving, be careful not to damage the surface with sharp or damp objects
- suitably protect and store products for outdoor use over winter or against adverse conditions; we recommend storing those products in a dry and airy place or using protective covers
- avoid improper use of the product, such as sitting on a backrest or armrest, or swinging or standing on a chair
- avoid placing greasy, wet, hot or cold objects directly on the solid wood surfaces, as they may leave a permanent trace

PRODUCT CONSTRUCTIONS

The inner construction of our furniture consists of panel materials (plywood) and/or metal elements, which provide the basic shape of the product. Seat and backrest supports (wave springs, elastic bands, goodside® slats), together with the foam (HR foam, polyurethane foam), makes our furniture comfortable and durable.

Foams are high quality polymer materials with the high elasticity and resistancy to permanent deformation. HR foam is produced by cold process based on water and does not contain any harmful chemicals. It has excellent hygienic and antiallergic properties. Polyurethane foam is made of recyclable material. We use cold and polyurethane foams of a wide range of density and hardness, to provide a wide selection in obtaining the desired comfort. Moulded polyurethane foam is used in products of specific shape - constructions is soaked in a foam which takes the form of a mould into which it is poured, by expansion. This process results with a final form ready for upholstering.

Metal parts are made of aluminium and steel of the highest quality as well as stainless steel, suitable for outdoor use by seawater.

The fabrics and the leathers in our collection originate from the workshops of the most famous and renown European manufacturers.

We approach the wood as a natural resource with great respect and responsibility. The raw material we use the most is solid wood, especially Slavonian oak. In order to promote sustainable development and environmental protection, we are part of the Slavonian Oak Cluster. We have also introduced the FSC-STD-40-004 V3-0 Certificate to guarantee the sustainable development of the forest management. The ISO 14001: 2015 standard sets out requirements for the environmental management system, including the planning, establishment, implementation and monitoring of the environmental management system.

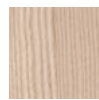
Materials & Maintenance

solid wood

Natural imperfections of wood, such as variations in colour and texture, knots and tree rings, are not considered faults and undesirable characteristics but rather the values of the natural material used. Our wood is treated with oil or lacquer in such a way that the material appears as naturally as possible, emphasizing the appearance of an open tree ring. Colour lacquer does not completely fill the pores of wood to emphasize the natural quality of the material, and tree rings remain visible. There are no visible tree rings in lacquered plywood. Oil and lacquer on all wooden surfaces always give matte effect, which is Prostoria's visual standard for the processing and protection of the wood.

Outdoor wood, especially teak, has an even more pronounced change in the tone and intensity of visible tree rings over time, which is not considered a fault but a natural quality and refinement of the product.

high quality oil



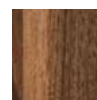
OAK LIGHT



OAK NATURE



OAK DARK



**WALNUT
EUROPEAN**

outdoor oil



LARCH



IROKO



TEAK

lacquer matte



OAK LIGHT



OAK NATURE



ASH



**WALNUT
EUROPEAN**

colour lacquer matte



010 90 10
light apricot



030 50 20
red brown



3007
black red



050 70 40
light orange



3016
coral red



085 70 60
pear yellow



110 40 20
antique green



120 90 20
sorbet green



170 70 15
light green



5003
sapphire blue



9005
jet black



7037
dusty grey



7047
telegrey



7039
quartz grey



060 70 05
cement greige



9002
grey white

Wipe the surface regularly with a clean and dry cloth. If the surface of the product is dirty, you can wipe it using a well-drained cloth soaked in water or a light neutral soap. Remove any soapy residue immediately. If the surface is slightly damaged or appears matt, we recommend our wood surface maintenance kit. Avoid products containing acetone, diluents, ammonia, abrasive detergents or furniture wax. Avoid placing greasy, wet, hot or cold objects directly on the solid wood surfaces, as they may leave a permanent trace.

Materials & Maintenance

table tops

Fenix NTM is a table top finish in the form of a thin laminate that is pressed to the bottom and top of the mdf. The sides of the mdf are lacquered. Fenix is a durable material that does not show fingerprints. It can be cleaned using a damp soft cloth soaked in warm water or a solution of water and mild detergent. We recommend the use of the Fenix maintenance kit (contact your nearest salon or the dealer where you purchased the product). Damages such as scratches that are not cut in can be treated thermally using an iron and a damp cloth.

MDF + FENIX NTM



0720
black



0724
dark grey



0725
light grey



0718
beige



0032
white

TRESPA HPL

Trespa Meteon outdoor table tops have a very compressed surface, virtually pore-free, making them very impervious to contamination. This is why Trespa Meteon® is highly resistant to most chemicals, including many non-aggressive and aggressive cleaning agents. Do not use abrasive or polishing cleaners. Use only clean sponges and soft cloths. Algae and mould will not enter the pores of the material so they are easy to clean just like dust, stains or fingerprints. You can wash them off using a universal household cleaner. Rinse and wipe the board using a soft cloth to avoid any traces remaining after washing. All colours have a black core, visible on the side.



L 90.0.0
black



L 21.5.1
grey



L 05.0.0
white

GLASS

The glass surfaces can be cleaned with a well-drained soft cloth soaked in a mixture of alcohol and water or glass cleaner. Wipe the surface with a dry, lint-free cloth. Avoid products containing acetone, ammonia, chlorine, and solvents, abrasives, and furniture wax.



PARSOL GREY



PARSOL BRONZE

QUARTZ



BLACK AND MORE 625
brushed



BREEZE HULL 830
brushed



FOSSIL SEASHELL 865
brushed

STONE



NERO MARQUINA
fine brushed

Materials & Maintenance

metal

All powder coated metal products and elements have a matte finish, which is Prostoria's visual standard used in the processing and protection of metallic materials.

Hand-welded metal parts may have minor imperfections that do not affect the quality or function of the product, but are a reflection of the manual work of our craftsmen.

Metal products intended for outdoor use have a double finish - primer for better mechanical resistance and a coloured coating that provides protection from corrosion.

To clean powder coated metal products, use a damp soft cloth soaked in a solution of water and a pH neutral detergent, and wipe with a clean, dry, soft cloth.



010 90 10
light apricot



3015
light pink



030 50 20
red brown



3007
black red



050 70 40
light orange



030 60 50
calypso red



3016
coral red



080 80 50
mirabelle yellow



085 70 60
pear yellow



095 60 50
gooseberry green



110 40 20
antique green



120 90 20
sorbet green



170 70 15
light green



200 50 15
nickel green



210 90 10
antarctic blue



240 70 15
bermuda blue



5003
sapphire blue



7021
black grey



7022
umbra grey



7039
quartz grey



060 70 05
cement greige



7047
telegrey



9002
grey white



9005
jet black



7012
basalt grey



7037
dusty grey



000 70 00
light grey



9003
signal white



TREND 9
deep matte black structure

Materials & Maintenance

upholstery & cushions

Suede and other types of leather may have scars and wrinkles, or minor changes in tone or imperfections that are not considered faults but an anomaly that confirms the natural quality of the material. As such, they are considered a positive feature of the product. It is the responsibility of Prostoria to position such anomalies on less visible parts of the product when tailoring the material.

Some types of fabrics have certain properties due to finishing, such as tufting, dots or other effects on fabrics, etching of velvet, or production methods that are not considered as flaws. For fabrics, suede and other types of leather, each production lot may indicate a slight difference in colour in comparison with the pattern or a product manufactured at an earlier time. To properly maintain the leather and fabrics, visit the manufacturer's website or www.prostoria.eu and follow the instructions.

Products made with leather or fabric should not be exposed to direct light and positioned at least 1 meter away from the source of the heat, as those factors may contribute to discoloration or drying of the leather, which can cause cracks.

Upholstered sofas should be vacuumed regularly using a suitable extension and ventilated to prevent deterioration and impurities. Due to use, the fabric will eventually need to be straightened and seams adjusted manually. The folds can be straightened using steam. In case of spillage, remove the liquid immediately by tapping with absorbent paper or cloth. Do not rub the stain!

The velour covers should also be regularly vacuumed or wiped with a cloth, always following the direction of the thread. Aniline leather has no or very light surface protection and, by its nature, gains patina and traces of use over time. Semi-aniline leather has a lightweight surface protection so these furniture sets can be vacuumed and stains cleaned using a damp cloth soaked in the water, a light neutral soap, or a specialized leather care agent. Remove soap marks immediately using a dry, soft, cotton cloth. Be careful not to let too much water soak into the pores. Always remove stains moving from the edge towards the centre of the stain, so as not to expand the affected area. Avoid concentrated detergents or agents containing bleach, ammonia, or products used for cleaning and protecting of clothing and shoes.

Cushions can be filled with 100% feathers and down mixture, or with 100% polyester fibre filling. In order for the cushions to look good and provide comfort for as long as possible, they need to be regularly aerated and their filling shaken, which will allow them to return to their original shape. We recommend rotating the cushions (top-bottom and front-back sides) so that they are equally used on all sides. Cushions filled with feathers have a 100% goose feathers and down filling, without chemical treatment. They should be shaken and tapped regularly to redistribute the filling and reduce the effect of flattening

Product Chart: Home Collection

NOTE - PLUS + HIGHLY RECOMMENDED | DOT • AVAILABLE | MINUS - NOT RECOMMENDED | X NOT AVAILABLE

	ERA 100	RELATE 200	TUNDRA 200	PLATONE 200	RICO 300	FANOS 300	CREPE 300	SYNERGY 300	GORDON 300	GRIZZLY 300	ORETTO 400	MARSHAL- LOW 400	CREDO 400	OPERA 400
3ANGLE	X	•	•	•	+	+	+	+	•	•	•	•	+	•
ABSENT	X	X	•	•	•	•	•	+	+	+	+	+	•	•
BAVUL	+	-	+	+	+	+	+	+	+	+	+	+	+	+
BIK CUSHION	•	•	•	•	•	•	•	+	•	+	•	•	•	•
CLASSIC	•	•	+	•	+	+	+	•	+	+	+	•	+	+
CLOUD	X	X	+	X	X	X	+	X	+	+	+	X	+	X
COMBINE	X	•	•	•	+	+	+	•	+	+	+	•	+	+
COMBO	•	+	•	•	+	+	+	+	+	+	+	•	+	+
CONVERT	•	+	•	•	+	+	+	+	+	+	+	X	+	•
DOBRA	•	•	•	•	+	+	+	+	+	+	+	•	+	+
ECHO	X	X	•	•	•	•	•	•	+	+	+	X	•	X
ELEGANCE	•	•	+	+	+	+	+	•	+	+	+	•	+	+
ELEGANCE LUX	X	X	+	+	+	+	+	•	+	+	+	•	+	+
FADE	•	•	•	•	+	+	+	+	+	+	+	•	+	+
IMPRESSION	-	•	+	+	+	+	+	•	+	+	+	•	+	+
JUGO	X	X	X	X	X	X	X	X	X	X	X	X	X	X
KLASTER	-	X	•	•	+	+	+	+	•	+	+	•	•	-
KONTRAPUNKT	X	X	•	+	+	+	+	+	+	+	+	•	+	+
LAYOUT	X	X	X	•	•	•	•	•	+	+	+	+	•	•
MATCH	-	•	+	•	+	+	+	•	+	+	+	•	+	+
MONK EASY CHAIRS, CHAIRS, BARSTOOLS WITH BACKREST	•	•	•	•	+	+	+	+	+	+	+	X	+	X
MONK BARSTOOLS	•	•	•	•	+	+	+	+	+	+	+	-	+	X
MONK BENCH CUSHION	•	X	•	+	+	+	+	+	+	+	•	+	+	X
OBLIKANT COVER	•	•	-	•	•	•	•	•	•	•	X	X	•	•
OBLIQUE	•	•	•	•	•	•	•	+	•	+	+	X	•	•
OSMO CUSHION	X	•	X	X	X	X	X	X	X	X	X	X	X	X
PIUN	•	+	•	•	+	+	+	+	•	+	•	X	+	+
PIL-LOW	•	•	X	X	X	X	X	+	X	X	X	•	X	X
POLYGON	•	•	•	•	•	•	•	+	+	+	+	•	•	•
REVOLVE	•	X	X	X	•	•	•	+	•	•	•	X	X	X
RHOMB CUSHION	•	•	•	•	•	•	•	•	+	+	•	•	•	•
SEAM	•	•	•	•	•	•	•	+	+	+	+	X	+	+
SEGMENT	•	•	•	•	•	•	•	+	•	•	•	•	+	+
STRAIN EASY CHAIR	•	•	•	•	+	+	+	+	•	+	•	X	+	+
STRAIN LOW CHAIR	•	•	+	+	+	+	+	+	+	+	+	•	+	+
STRAIN & UNSTRAIN CHAIRS	•	•	•	•	+	+	+	+	•	•	•	X	•	•
UMOMOKU	•	•	•	•	•	•	•	•	•	+	•	-	+	+
UP-LIFT	•	X	X	•	+	+	+	+	•	•	•	•	+	X
TINKER	-	X	•	•	+	+	+	•	+	+	+	X	+	+
TOGGLE	X	•	•	+	+	+	+	+	+	+	+	•	+	+
TRIFIDAE	X	X	X	-	•	•	•	+	•	+	+	•	+	•
TRIFIDAE CHAIR & EASY CHAIR	X	X	X	-	•	•	•	+	•	•	•	•	•	•
CUSHIONS	•	+	•	•	+	+	+	+	+	+	+	•	+	+

Product Chart: Home Collection

NOTE - PLUS + HIGHLY RECOMMENDED | DOT • AVAILABLE | MINUS - NOT RECOMMENDED | X NOT AVAILABLE

	DIVINA 3 500	DIVINA MD 500	DIVINA MELANGE 500	HALLINGDAL 65 500	SPRINKLES 600	TRIANGLE 600	UNIFORM MELANGE 600	RAZZLE DAZZLE 700	CODA 700	SELECT 60	DIVINA 80	CERVO 80	TUNDRA 80	ACQUARIO 80	PATIO OUTDOOR 300
3ANGLE	+	+	+	+	•	X	•	•	+	•	•	•	X	•	X
ABSENT	+	+	+	+	+	+	+	+	•	X	X	X	X	X	X
BAVUL	+	+	+	+	•	•	•	•	+	•	X	•	•	•	X
BIK CUSHION	+	+	+	+	•	•	•	•	•	•	•	X	X	•	X
CLASSIC	•	•	•	+	•	•	•	•	+	•	•	•	•	•	X
CLOUD	X	X	X	+	X	X	X	X	+	X	+	+	+	+	X
COMBINE	•	•	•	+	+	•	+	+	+	+	•	+	+	+	X
COMBO	+	+	+	+	+	•	•	+	+	•	•	•	•	•	X
CONVERT	+	+	+	+	+	X	X	+	•	+	•	+	+	+	X
DOBRA	+	+	+	+	+	•	+	+	+	+	•	+	+	+	X
ECHO	•	•	•	+	•	X	•	•	•	X	X	X	X	+	X
ELEGANCE	+	+	+	+	+	•	•	+	+	+	•	+	+	+	X
ELEGANCE LUX	•	•	•	+	+	•	•	+	+	+	•	+	+	+	X
FADE	+	+	+	+	•	-	•	•	•	X	X	X	X	X	X
IMPRESSION	+	+	+	+	+	•	•	+	+	X	X	X	X	X	X
JUGO	X	X	X	X	X	X	X	X	X	X	X	X	X	X	+
KLASTER	+	+	+	+	+	•	+	+	+	X	X	X	X	X	X
KONTRAPUNKT	+	+	+	+	X	X	X	X	•	+	+	+	+	+	X
LAYOUT	+	+	+	+	+	+	+	+	+	X	X	X	X	X	X
MATCH	+	+	+	+	•	•	•	•	+	•	•	•	•	•	X
MONK EASY CHAIRS, CHAIRS, BARSTOOLS WITH BACKREST	+	+	+	+	+	-	+	+	+	X	X	X	X	X	X
MONK BARSTOOLS	+	+	+	+	•	•	•	•	+	•	•	X	X	•	X
MONK BENCH CUSHION	+	+	+	+	•	•	•	•	•	•	X	•	•	•	X
OBLIKANT COVER	+	+	+	+	+	X	•	•	X	X	X	X	X	X	X
OBLIQUE	+	+	+	+	+	•	•	+	+	X	X	X	X	X	+
OSMO CUSHION	X	X	X	X	X	X	X	X	X	X	X	X	X	X	+
PIJUN	+	+	+	+	•	•	•	•	•	•	•	•	X	•	X
PIL-LOW	+	+	+	+	•	•	•	•	X	X	X	X	X	X	X
POLYGON	+	+	+	+	•	•	•	•	+	+	+	+	+	+	+
REVOLVE	+	+	+	+	•	-	•	•	X	X	X	X	X	X	X
RHOMB CUSHION	+	+	+	+	•	•	•	•	•	+	•	+	+	+	X
SEAM	+	+	+	+	•	X	•	•	+	+	•	+	+	+	X
SEGMENT	+	+	+	+	•	•	•	•	•	•	•	•	•	•	X
STRAIN EASY CHAIR	+	+	+	+	•	•	•	•	+	+	•	+	+	+	X
STRAIN LOW CHAIR	+	+	+	+	-	-	-	+	+	•	•	•	•	•	X
STRAIN & UNSTRAIN CHAIRS	+	+	+	+	•	•	•	•	+	X	•	X	X	X	X
UMOMOKU	-	-	-	+	-	-	-	-	+	•	X	•	X	•	+
UP-LIFT	+	+	+	+	•	-	+	+	+	X	X	X	X	X	X
TINKER	+	+	+	+	•	•	•	•	+	X	X	X	X	X	X
TOGGLE	+	+	+	+	+	•	+	+	+	+	•	+	+	+	X
TRIFIDAE	+	+	+	+	+	-	+	+	•	+	•	•	X	+	X
TRIFIDAE CHAIR & EASY CHAIR	+	+	+	+	+	•	+	+	•	X	X	X	X	X	X
CUSHIONS	+	+	+	+	+	+	+	+	+	•	•	•	•	•	X

Fabrics & Leathers Specifications

fabric			collection	specification	pillling	martindale cycles	light fastness	maintenance
100	ERA	CAMIRA	HOME CONTRACT	100% polyester	4	100.000	5	
200	RELATE	KVADRAT	HOME CONTRACT	100% Trevira CS	4-5	80.000	6-7	
200	TUNDRA	MARIO SIRTORI	HOME	42% viscose, 38% cotton, 14% acrylic, 6% polyester	3-4	30.000	5	
200	PLATONE	MARIO SIRTORI	HOME	42% acrylic, 32% cotton, 20% viscose, 6% polyester	3-4	30.000	4-5	
300	RICO	TORRI LANA	HOME	56% cotton, 30% viscose, 14% linen	3-4	36.000	4-5	
300	FAROS	TORRI LANA	HOME	60% cotton, 17% viscose, 10% linen, 10% wool, 3% silk	3-4	50.000	4-5	
300	CREPE	TORRI LANA	HOME	50% cotton, 33% viscose, 17% linen	3-4	35.000	4-5	
300	SYNERGY	CAMIRA	HOME CONTRACT	95% virgin wool, 5% polyamide	4	100.000	5	
300	GORDON	MARIO SIRTORI	HOME	31% viscose, 28% cotton, 20% wool, 10% polyamide, 6% polyester, 5% other fibres	3-4	30.000	5	
300	GRIZZLY	MARIO SIRTORI	HOME	28% acrylic, 24% cotton, 20% viscose, 16% wool, 12% polyester	4	50.000	4-5	
400	ORSETTO	MARIO SIRTORI	HOME	34% viscose, 33% polyamide, 17% wool, 8% polyester, 4% linen, 4% cotton	4	50.000	4-5	
400	MARSHMALLOW	MARIO SIRTORI	HOME	100% polyester	5	25.000	5	
400	CREDO	ROHI	HOME CONTRACT	95% virgin wool, 5% polyamide	5	100.000	4-5	
400	OPERA	ROHI	HOME CONTRACT	96 % virgin wool, 4 % polyamide	4-5	90.000	5	
500	DIVINA 3	KVADRAT	HOME CONTRACT	100% new wool	3	45.000	7	
500	DIVINA MD	KVADRAT	HOME CONTRACT	100% new wool	3	45.000	6	
500	DIVINA MELANGE	KVADRAT	HOME CONTRACT	100% new wool	3	45.000	6	
500	HALLINGDAL 65	KVADRAT	HOME CONTRACT	70% new wool, 30% viscose	3-4	100.000	7	
fabric			collection	specification	pillling	martindale cycles	light fastness	maintenance
600	UNIFORM MELANGE	FEBRIK	HOME	68% wool, 22% polyamide, 10% polyester	4	100.000	6	
600	TRIANGLE	FEBRIK	HOME	17% wool, 5% polyamide, 13% polyester, 65% polyester filling	4-5	60.000	7	
600	SPRINKLES	FEBRIK	HOME	30% wool, 10% polyamide, 20% polyester, 40% polyester filling	4	80.000	7	
700	RAZZLE DAZZLE	FEBRIK	HOME	60% new wool, 20% polyamide, 20% polyester	4	100.000	6	
700	CODA 2	KVADRAT	HOME	90% new wool, 10% nylon	4	100.000	6-7	

leather		
60	SELECT	STOLZ
80	CERVO	STOLZ
80	TUNDRA	STOLZ
80	ACQUARIO	DANI
80	DIVINA	STOLZ
indor & outdoor fabric		
300	PATIO	KVADRAT

collection	specification	colour fastness uv outdoor	martindale cycles	colour fastness dry & wet friction	maintenance
HOME	nappa leather with smooth grain structure				
HOME	aniline leather, slightly pigmented				
HOME	aniline leather, organic pigment				
HOME	aniline leather, organic pigment				
HOME	aniline leather, organic pigment				
collection	specification	colour fastness uv outdoor	martindale cycles	colour fastness dry & wet friction	maintenance
HOME CONTRACT	100% Trevira CS	4-5	50.000	7	

- Do not wash in water
- Wash in cold water
- Hand wash only
- Do not bleach
- Do not tumble dry
- Tumble dry

- Machine wash at 30°C max
- Machine wash at 40°C max
- Machine wash at 60°C max
- Dry clean
- Do not dry clean
- Wipe with microfiber cloth

- To iron use cool setting (max 110°C)
- To iron use medium setting (max 150°C)
- To iron use hot setting (max 200°C)
- Do not iron
- Dry clean using perchloroethylene only
- Dry clean with perchloroethylene, use precautions

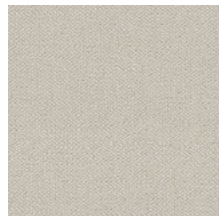
Category 100

Era by Camira

collection: Home & Contract
 composition: 100% polyester
 width: 140 cm +/- 2 cm
 piling: 4
 abrasion resistance: 100.000 cycles
 light fastness: class 5
 rubbing fastness: 4 dry and wet
 manufacturer guarantee: 10 years



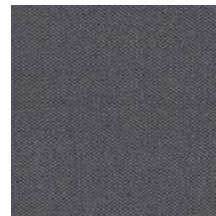
02



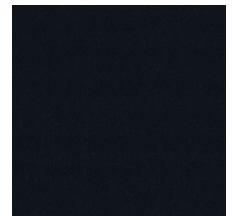
01



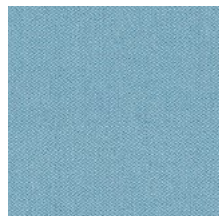
11



13



14



20



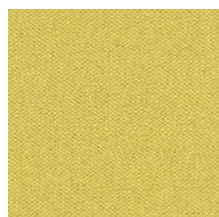
08



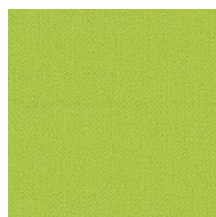
10



15



03



07



16



05



06



19

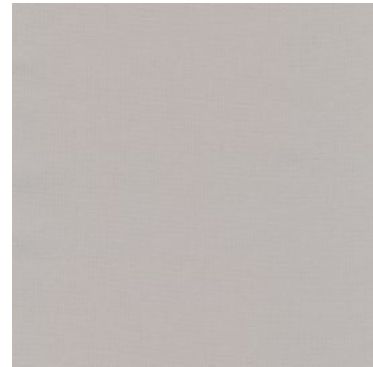


17

Category 200

Relate by Kvadrat

collection: Home & Contract
 composition: 100% Trevira CS
 width: Approx. 140 cm (Approx. 55")
 piling: 4-5 (ISO 1-5)
 abrasion resistance: 80,000 cycles
 light fastness: class 6-7
 rubbing fastness: 5 dry and wet
 manufacturer guarantee: 10 years
 Sustainability EU Ecolabel



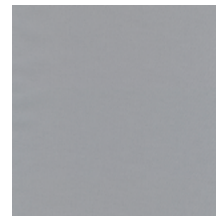
101



201



111



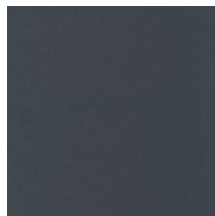
121



151



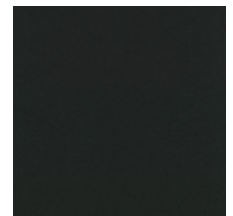
161



171



181



191



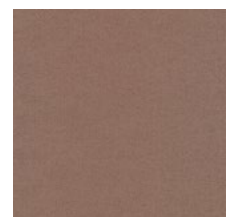
401



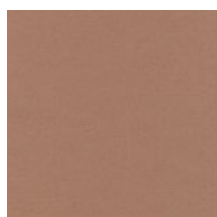
431



221



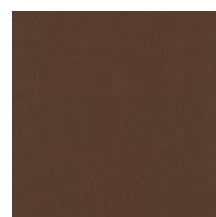
341



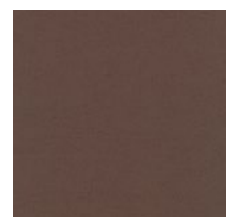
441



461



271



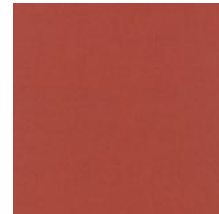
371

Category 200

Relate by Kvadrat



671



561



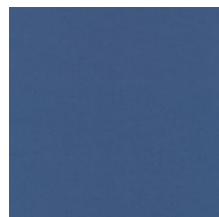
641



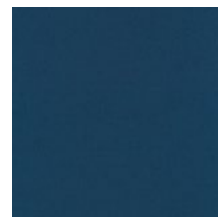
571



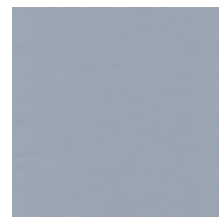
611



771



881



711



741



921



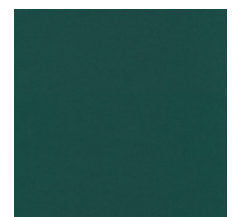
941



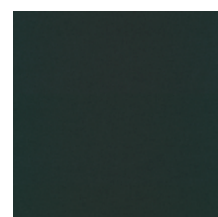
821



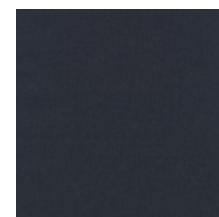
961



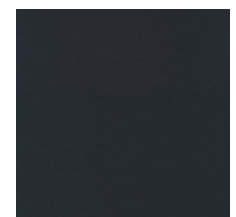
981



991



691

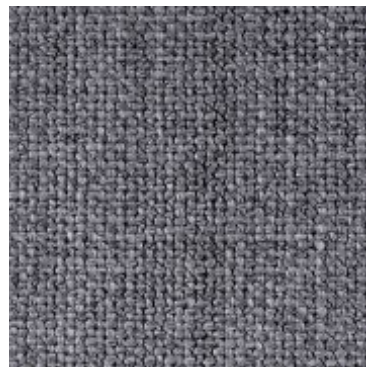


791

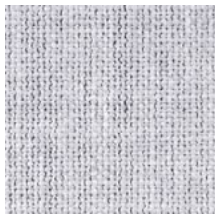
Category 200

Tundra by Mario Sirtori

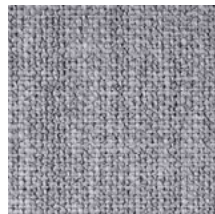
collection: Home
composition: 42% viscose, 38% cotton,
14% acrylic, 6% polyester
width: 140 cm +/- 2 cm
piling: 3-4
abrasion resistance: 30.000 cycles
light fastness: class 5
rubbing fastness: 4-5 dry and wet



11



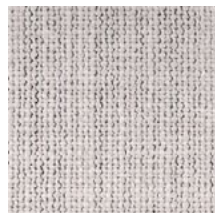
08



10



12



03



04



27



21

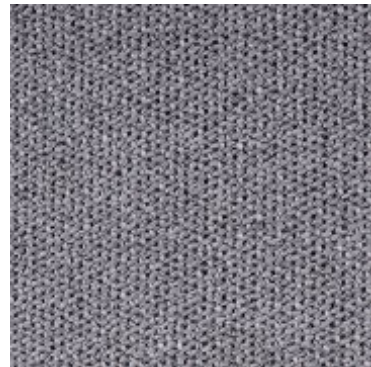


25

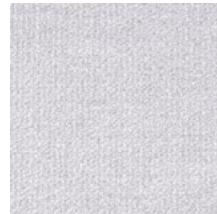
Category 200

Platone by Mario Sirtori

collection: Home
composition: 42% acrylic, 32% cotton,
20% viscose, 6% polyester
width: 140 cm +/- 2 cm
piling: 3-4
abrasion resistance: 30.000 cycles
light fastness: class 4-5
rubbing fastness: 5 dry, 4 wet



96



90



97



02

Category 300

Rico by Torri Lana

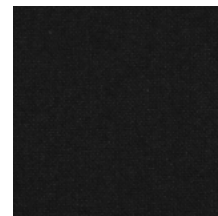
collection: Home
composition: 56% cotton, 30% viscose,
14% linen
piling: 3-4
abrasion resistance: 36.000 cycles
light fastness: class 4-5



130



250



070



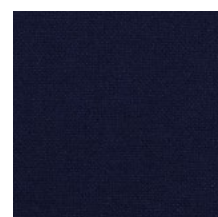
080



000



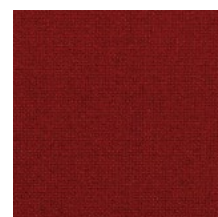
320



150



270



280

Category 300

Faros by Torri Lana

collection: Home
composition: 60% cotton, 27% viscose,
0% linen, 10% wool, 3% silk
piling: 3-4
abrasion resistance: 50.000 cycles
light fastness: class 4-5

**260****302****240****160****141****080**

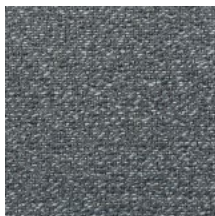
Category 300

Crepe by Torri Lana

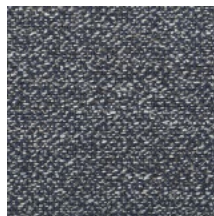
collection: Home
composition: 50% cotton, 33% viscose,
17% linen
piling: 3-4
abrasion resistance: 35.000 cycles
light fastness: class 4-5



034



003



050



051



103



039



033

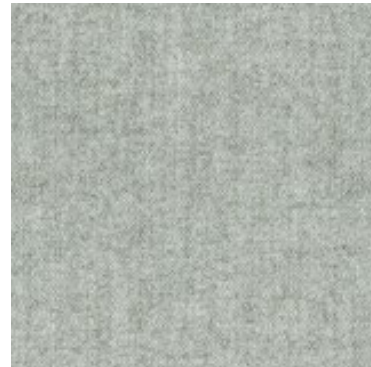


035

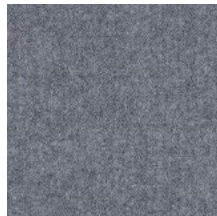
Category 300

Synergy by Camira

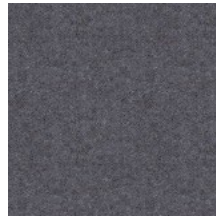
collection: Home & Contract
 composition: 95% virgin wool, 5% polyamide
 width: 140 cm +/- 2 cm
 piling: 4
 abrasion resistance: 100.000 cycles
 light fastness: class 5
 rubbing fastness: 4 wet and dry
 manufacturer guarantee: 10 years



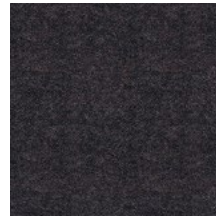
008



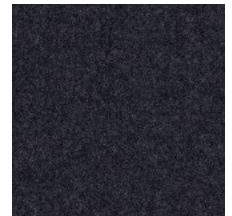
016



035



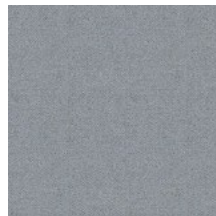
034



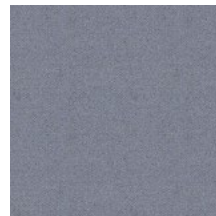
017



019



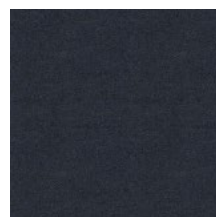
020



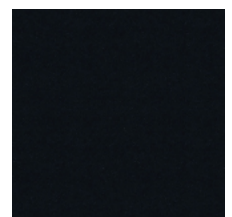
021



024



025



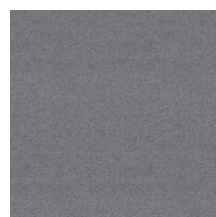
027



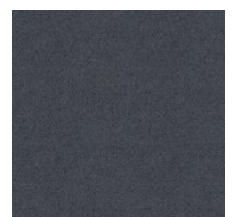
032



033



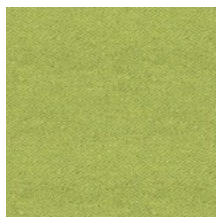
031



029

Category 300

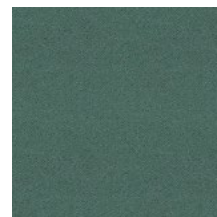
Synergy by Camira



046



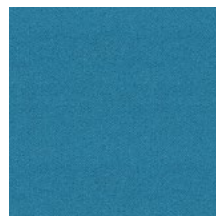
047



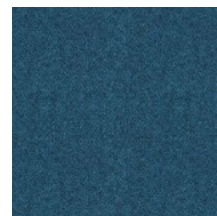
049



056



057



059



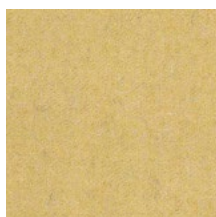
062



074



084



045



028

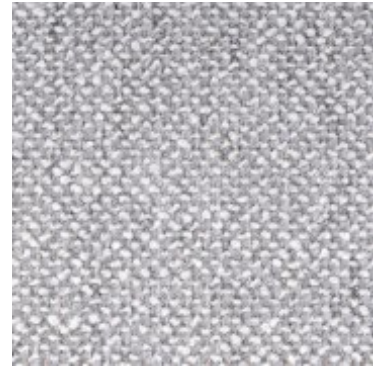


086

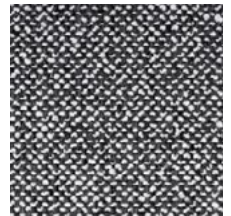
Category 300

Gordon by Mario Sirtori

collection: Home
composition: 31% viscose, 28% cotton,
20% wool, 10% polyamide, 6% polyester, 5% other
width: 140 cm +/- 2 cm
piling: 3-4
abrasion resistance: 30.000 cycles
light fastness: class 5
rubbing fastness: 5 dry and 3-4 wet



90/1



98/2



03/1



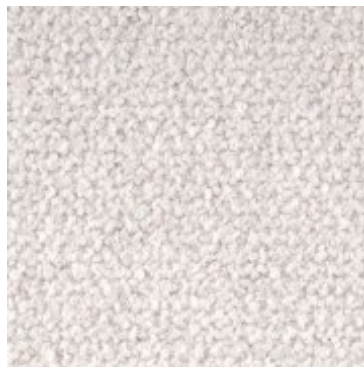
10/01

Category 300

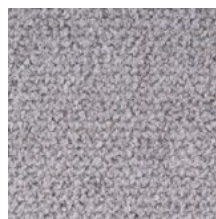
Grizzly

by Mario Sirtori

collection: Home
composition: 28% acrylic , 24% cotton,
20% viscose, 16% wool, 12% polyester
width: 140 cm +/- 2 cm
piling: 4
abrasion resistance: 50.000 cycles
light fastness: class 4-5
rubbing fastness: 5 dry, 3-4 wet



02



20



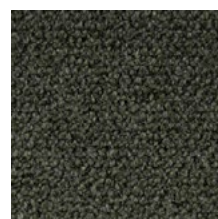
17



03



19



11

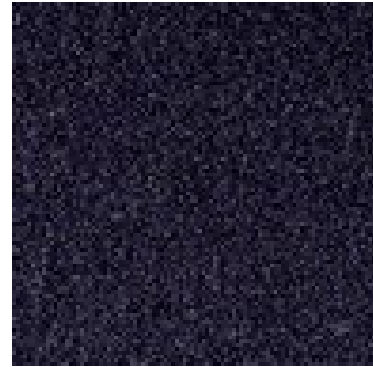


06

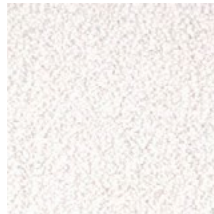
Category 400

Orsetto by Mario Sirtori

collection: Home
 composition: 34% viscose, 33% polyamide,
 17% wool, 8% polyester, 4% linen, 4% cotton
 width: 140 cm +/- 2 cm
 piling: 4
 abrasion resistance: 50.000 cycles
 light fastness: class 4-5
 rubbing fastness: 5 dry, 3-4 wet



98/20



01/1



02/22



98/21



01/2



05/10



05/9

Category 400

Marshmallow

by Mario Sirtori

collection: Home
composition: 100% polyester
width: 140 cm +/- 2 cm
piling: 5
abrasion resistance: 25,000 cycles
light fastness: class 5



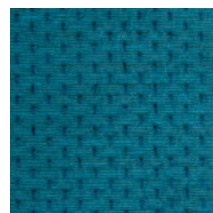
05/10



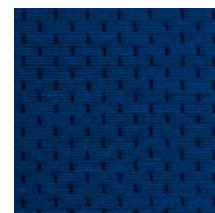
05/66



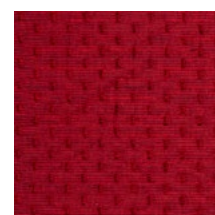
05/6



05/1



05/12

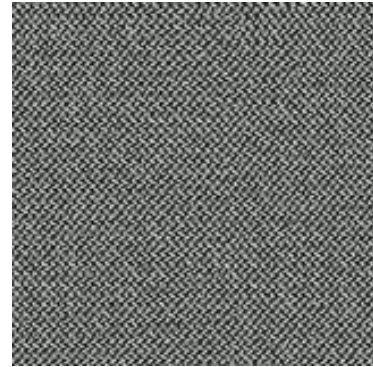


05/2

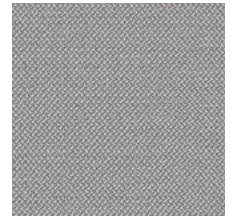
Category 400

Credo by Rohi

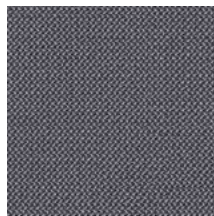
collection: Home & Contract
 composition: 95% virgin wool , 5% polyamide
 width: 140 cm +/- 2 cm
 piling: 4-5
 abrasion resistance: 100.000 cycles
 light fastness: class 5
 rubbing fastness: 4-5 dry and wet



pepper



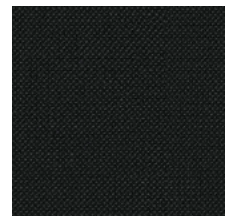
zinn



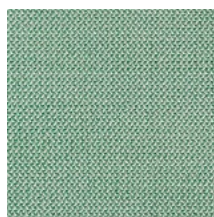
carbon



asphalt



black



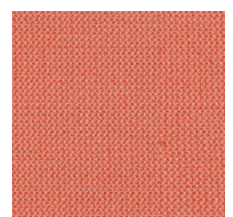
aloe



sea



aureo

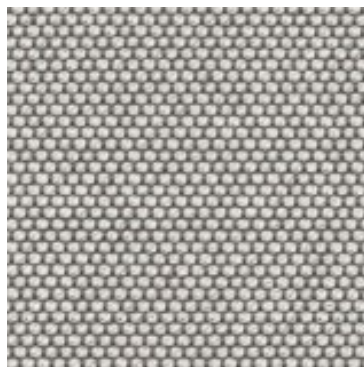


grapefruit

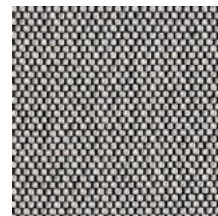
Category 400

Opera by Rohi

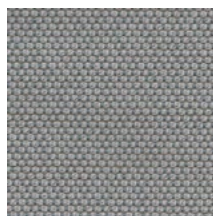
collection: Home & Contract
composition: 96% virgin wool , 4% polyamide
width: 140 cm +/- 2 cm
piling: 4-5
abrasion resistance: 90.000 cycles
light fastness: class 5
rubbing fastness: 4-5 dry and wet



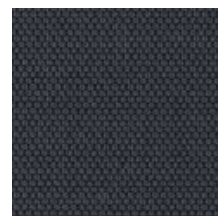
mirror



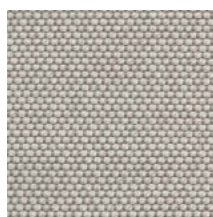
pepper



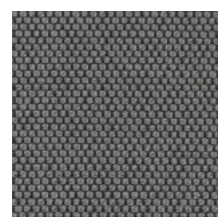
lake



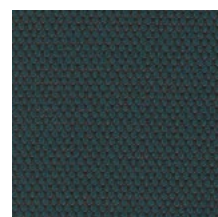
anthrazit



macadamia



kies



smaragd

Category 500

Divina 3 by Kvadrat

collection: Home & Contract
 composition: 100% new wool
 width: 150 cm
 piling: 3
 abrasion resistance: 45.000 cycles
 light fastness: class 7
 rubbing fastness: 4-5 dry, 3-5 wet
 manufacturer warranty: 10 years



181



173



191



224



691



171



154



893



944

Category 500

Divina MD by Kvadrat

collection: Home & Contract
composition: 100% new wool
width: 150 cm
piling: 3
abrasion resistance: 45.000 cycles
light fastness: class 6
rubbing fastness: 4-5 dry, 3-5 wet
manufacturer warranty: 10 years



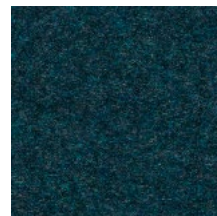
913



943



973



873



713



733



743



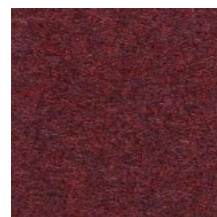
773



613



653



673

Category 500

Divina Melange by Kvadrat

collection: Home & Contract
composition: 100% new wool
width: 150 cm
piling: 3
abrasion resistance: 45.000 cycles
light fastness: class 6
rubbing fastness: 4-5 dry, 3-5 wet
manufacturer warranty: 10 years

**120****220****170****180**

Category 500

Hallingdal 65 by Kvadrat

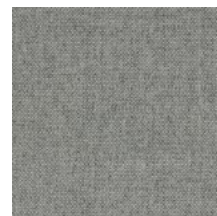
collection: Home & Contract
composition: 70% new wool, 30% viscose
width: 130 cm
piling: 3-4
abrasion resistance: 100.000 cycles
light fastness: class 7
rubbing fastness: 4-5 dry, 3-5 wet
manufacturer warranty: 10 years



103



123



116



153



166



368



173



220



270



407



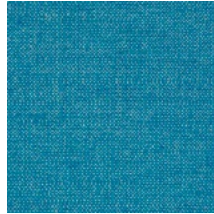
420



980

Category 500

Hallingdal 65 by Kvadrat



840



733



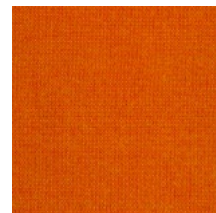
810



754



763



590



674

Category 600

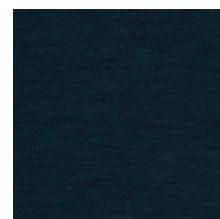
Uniform Melange

by Febrik Kvadrat

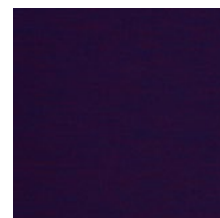
collection: Home
composition: 68% new wool, 22% nylon,
10% polyester
width: 165 cm
piling: 4
abrasion resistance: 80.000 cycles
light fastness: class 6
rubbing fastness: 4-5 dry and wet
manufacturer warranty: 5 years



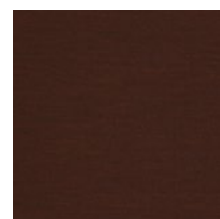
963 oase



883 hydro



683 blueberry



363 sienna

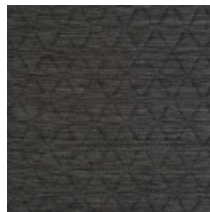
Category 600

Triangle by Febrik Kvadrat

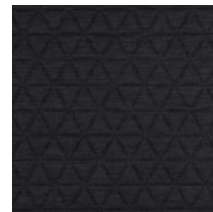
collection: Home
composition: 17% new wool, 5% nylon,
13% polyester, 65% polyester filling
width: 165 cm
piling: 4-5
abrasion resistance: 60.000 cycles
light fastness: class 7
rubbing fastness: 4 dry and wet
manufacturer warranty: 5 years



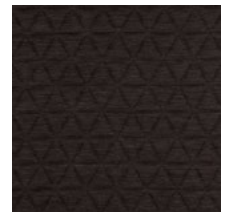
932 oase



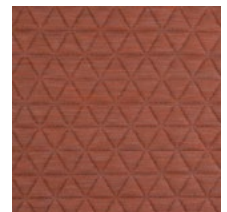
152 chalk



292 brownie



192 charcoal



532 blush

Category 600

Sprinkles by Febrik Kvadrat

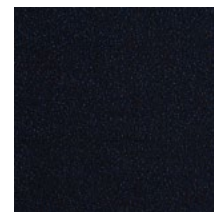
collection: Home
composition: 30% new wool, 10% nylon,
20% polyester, 40% polyester filling
width: 160 cm
piling: 4
abrasion resistance: 60.000 cycles
light fastness: class 7
rubbing fastness: 4-5 dry, 4 wet
manufacturer warranty: 5 years



174 hen



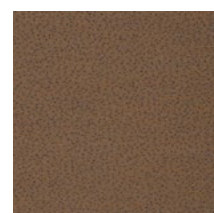
184 woodpecker



794 crow



124 finch



274 jay

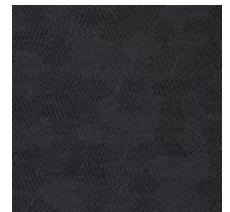
Category 700

Razzle Dazzle by Febrik Kvadrat

collection: Home
composition: 60% new wool, 20% nylon,
20% polyester
width: 160 cm
piling: 4
abrasion resistance: 80.000 cycles
light fastness: class 6
rubbing fastness: 4-5 dry and wet
manufacturer warranty: 5 years



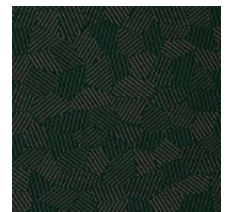
116 natural



156 carbon



886 sage

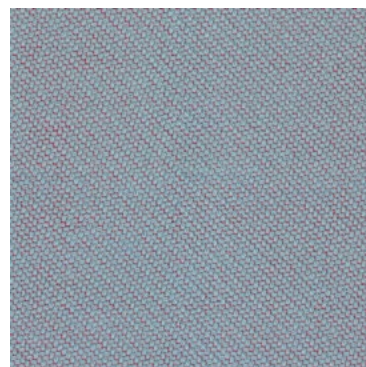


966 ranger

Category 700

Coda 2 by Kvadrat

collection: Home
composition: 90% wool, 10% nylon
width: 140 cm
piling: 4
abrasion resistance: 100.000 cycles
light fastness: class 5- 7
manufacturer warranty: 10 years



722



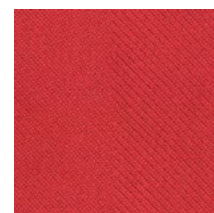
100



232



116



642



410

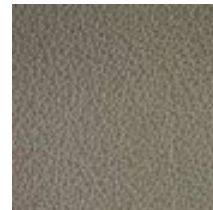
Category 6o

Select by Stolz

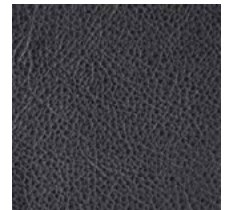
collection: Home
origin: scandinavian bullhides
thickness: 1.2 - 1.4 mm
surface: pigmented nappa with fine grain structure



359



231



301



307



787

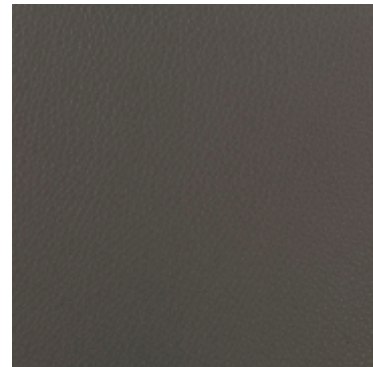


620

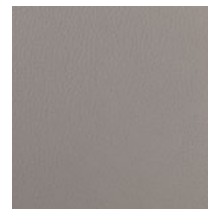
Category 80

Cervo by Stolz

collection: Home
origin: scandinavian bullhides
thickness: 1,5 - 1,7 mm
surface: aniline – slightly pigmented



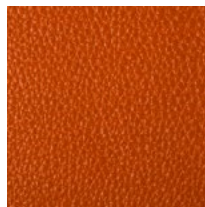
358



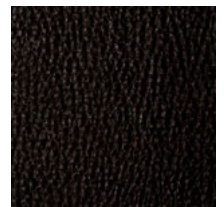
354



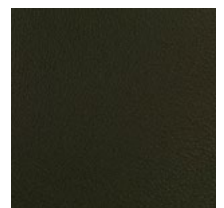
360



357



150



359

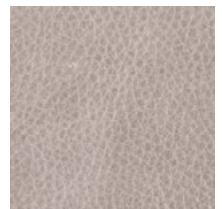
Category 80

Tundra by Stolz

collection: Home
origin: south german bullhides
thickness: 2.0 - 2.2 mm
surface: aniline



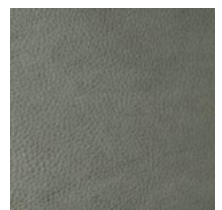
604 basalt



603 taupe



600 choco

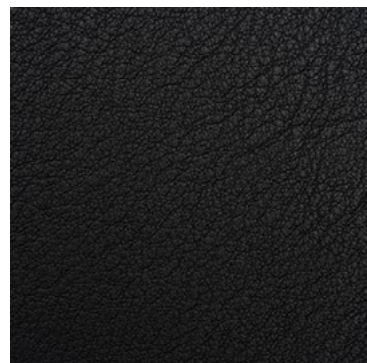


606 dark olive

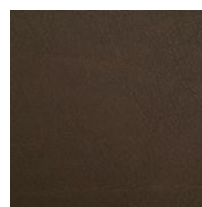
Category 80

Acquario by Dani

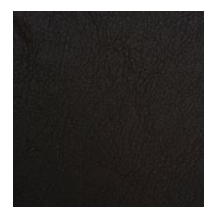
collection: Home
origin: european bovines
thickness: 1.0 - 1.2 mm
surface: aniline, full grain



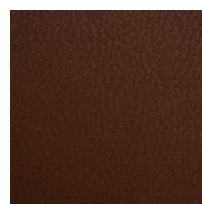
antracite



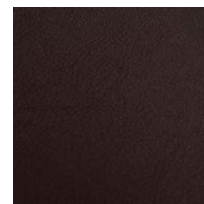
fango



testa di morro



cuoio

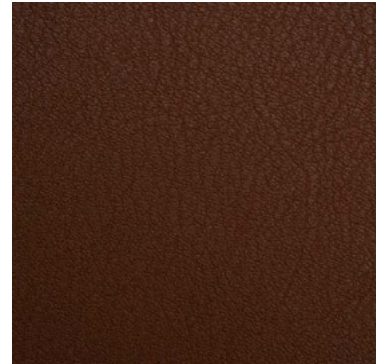


marrone

Category 8o

Divina by Stolz

collection: Home
origin: bovine leather
thickness: 1.4 - 1.6 mm
surface: aniline
sustainability: REACH regulation

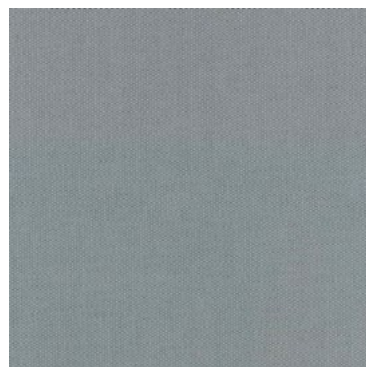


divina

Category 300

Patio by Kvadrat

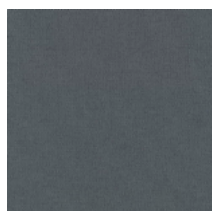
collection: Home & Contract
composition: 100% Trevira CS
width: Approx. 140 cm (Approx. 55")
piling: 4-5 (ISO 1-5)
abrasion resistance: 50.000 cycles
light fastness: class 7
rubbing fastness: 4-5 dry and wet
manufacturer guarantee: 10 years
sustainability: Greenguard Gold, HPD, EPD



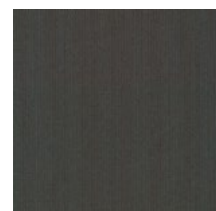
0140



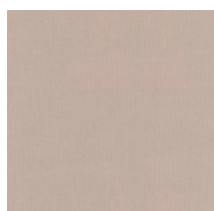
0110



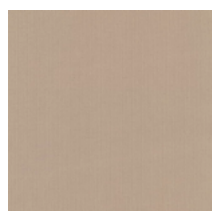
0170



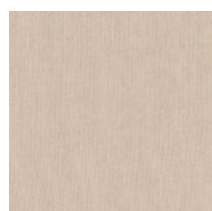
0970



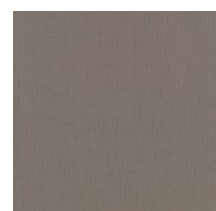
0210



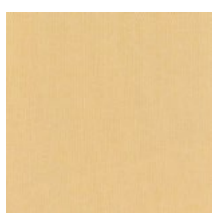
0230



0430



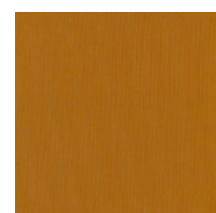
0150



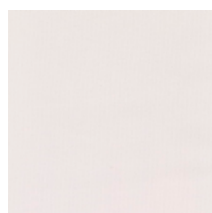
0410



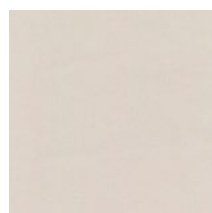
0440



0450



0100



0200



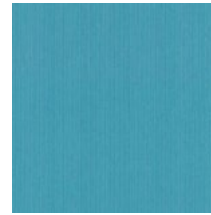
0220

Category 300

Patio by Kvadrat



0730



0740



0750



0840



0780



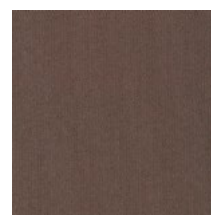
0650



0550



0340



0370



0570

Quick Ship

Fabrics

fabric	TUNDRA	PLATONE	CREPE	SYNERGY	GORDON	GRIZZLY	CREDO	OPERA	DIVINA MELANGE	HALLINGDAL 65
category	200	200	300	300	300	300	400	400	500	500
collection	HOME	HOME	HOME	HOME	HOME	HOME	HOME	HOME	HOME	HOME
	03	90	039	16	90/1	02	zinn	pepper	120	116
	10	97	103	17	98/2	03	asphalt	mirror	170	166
						17		kies		457

Contacts

Prostoria Ltd.

Pustodol Zacreški 19G
49 223 Sv. Kriz Zacrežje
Croatia
T: +385 49 200 555
M: wholesale@prostoria.eu
M: export@prostoria.eu
www.prostoria.eu

Please contact us for any information:
Monday-Friday: 08-16 h

COPYRIGHT 2021

The Materials Book is valid from is valid from 01. 10. 2021, until the new edition is published.

Prostoria Ltd. is not responsible for errors made in the print. The photos are informative. Possible texture and colour variations are caused by the printing process.

