



befame

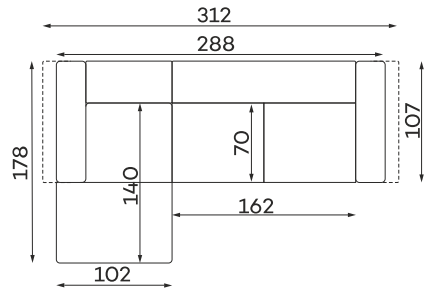
Tulia

Tulia is an interesting proposal, which can be a sofa, a smaller corner if we use a chaise longue or a larger one if you additionally incorporate a pouffe. You decide. As usual, we have ensured exceptional comfort – a soft yet resilient seat and a suitably contoured backrest, movable sides and an extra armrest that can be positioned exactly where you need it. And the look? In no way inferior to comfort! The high legs, available in several colours, add lightness to the shape and the fleshy trim adds charm. The advantage is also the interesting wrinkles formed in various places as a result of dragging your hand – the right choice of fabric will allow there to be more or less of them, depending on your preference.

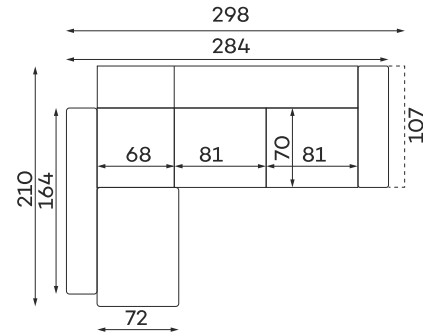
Corner sofas

Available in a left-hand or right-hand configuration. The sets below are left-hand facing.

TULIA SET 1



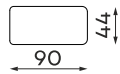
TULIA SET 2



All dimensions of upholstered furniture are given with a tolerance of +/- 4 cm

Modular units

Available in a left-hand or right-hand configuration. The sets below are left-hand facing.



Pouffe height 43

Leg colors available

-BLACK



-BRASS



Other dimensions



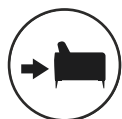
What makes the Tulia sofa stand out?



The sinuous springs make the seat more flexible and provide a perfect base for high-elastic foam.



You have the opportunity to choose a fabric from dedicated collections, including fabrics that are easy to clean.



The furniture is fully upholstered, so you can put it in the middle of the living room.



The collection offers several colours of legs. You decide what colour you want. Do you like them and want to buy them for your dresser, for example? Of course you can.



The perfect fit between the seat and backrest to the anatomical shape of the human body provides exceptional comfort and ergonomics of the body.



The highly elastic foam used increases the strength and elasticity of the seat preventing deformation.